

1998

, 가

가

1998

「

」

「

」

,

「

1998」

가

5

, , , ,

,
가

가

1999 4

이무근

FOREWORD

To adequately reflect social changes during the past few decades in Korea, new indicators have been developed. These indicators have been utilized by national policy makers, researchers, and by general users. Further, these indicators have contributed to enhancing national competitiveness and the quality of life, and to academic advancement.

The need to develop comparable indicators in the field of vocational education and training in Korea did not go unnoticed. In 1998, KRIVET conducted a study called 'Basic Research to Develop Vocational Education and Training Indicators' as one of their projects. The project, as a preparatory step to develop vocational education and training indicators, focused on developing an indicator system and indicator items which could integrate vocational education and vocational training. The concepts and formulas for each indicator item were prepared as a basis for developing vocational education and training indicators in the future.

『Vocational Education & Training Indicators in Korea 1998』 have been developed upon the basis of this basic study. Due to lack of time and data, we have only included available statistics in this edition. In this book, vocational education and training system has been divided into the following 5 target areas : environment, input, process, result, and international comparison.

We hope the data and statistics included in this book will be utilized as valuable data resources for policy makers, vocational education and training professionals, administrators, researchers, and the general public. We will make continuous efforts to improve and supplement the vocational education and training indicators, and to develop new indicators for new areas. We ask the reader and user of this book for continued interest and comments, which we will reflect on our next edition of vocational education and training indicators.

Last but not least, we thank every project team member in their efforts. Special thanks goes to our research assistants in their exhaustive efforts of entering the extensive list of data.



Mu-Keun Lee
President, KRIVET

1.

2.

3.

4.

5.

6.

7.

8.

(02-3498-5671)

How to Read the Book

1. The data included in this book is based on the statistics released by government agencies and major research institutions in Korea. Data sources are included at the bottom of each table.
2. The overall structure of the indicators and the order of the statistical tables included in this book reflect the results of the project 『Basic Research for Vocational Education and Training Indicators』 (1998). Due to the lack of available data and editing difficulties, some deviation from the guidelines was necessary.
3. Most individual indicator items are shown in both table and graph. However, some are shown only in table. To denote a graph which is connected to a specific table, G is attached to the serial number of the table.
4. Statistical tables, whenever possible, include data information from as far back as 1980.
5. Some of the numerical information shown in the tables, particularly percentages and population statistics, do not add up to the total due to rounding errors. (In most cases, the numbers are rounded to the second place below the decimal point.)
6. Among the Types of vocational high school(ex: table # 3-2), the category 'comprehensive' indicates schools having both vocational education programs and general education programs, and the category 'vocational' indicates schools comprised of technical, commercial and home economics departments.
7. The note (-) marked on the statistical tables indicate that the pertinent data is missing or limited.
8. All the questions and comments for the data included in the book should be addressed directly to the institutions which originally released the statistics, or to the Center for Labor Market Analysis at KRIVET.

- Address : 155, Kaepo-dong, Kangnam-gu, Seoul, Korea, 135-240
- Phone : 3498-5671~2
- Fax : 573-7263

학 제

SCHOOL SYSTEM

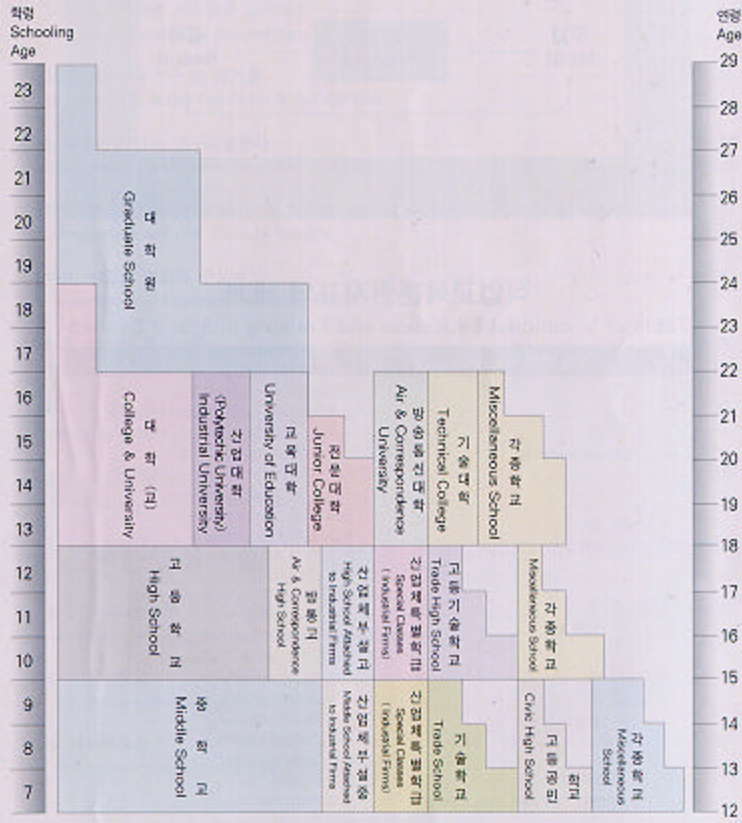


Figure : System of Vocational Education and Training Indicators

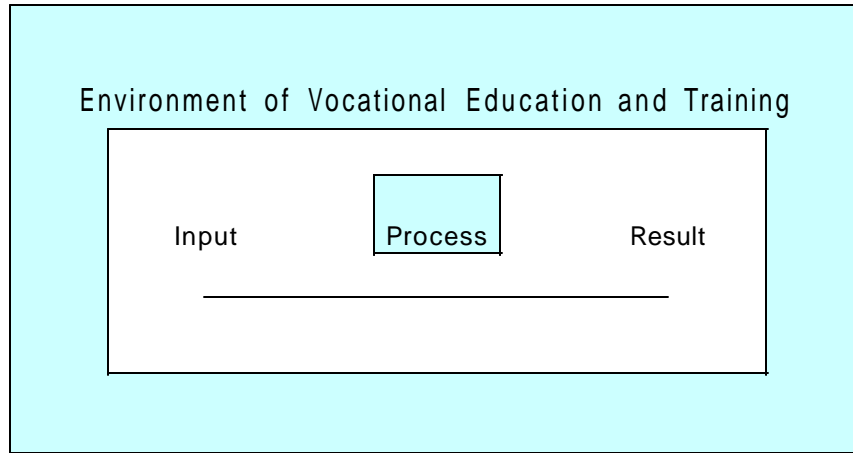


Table of Vocational Education and Training Indicator System

Goal	Concerns
1. Environment	1-1. Demographics
	1-2. Socio-Economic Structure
	1-3. Labor Markets
	1-4. Vocational Consciousness
2. Input	2-1. / Opportunities
	2-2. / Facilities
	2-3. / Administration/Finance
3. Process	3-1. Structure
	3-2. / Students/Trainees
	3-3. Teachers
	3-4. Learning Process
	3-5. Career Guidance
4. Result	4-1. Graduation
	4-2. Earnings
	4-3. Qualification
	4-4. Achievement
5. International Comparison	5-1. Environment
	5-2. Input
	5-3. Process
	5-4. Result

Contents

1.	Environment of Vocational Education and Training	
1-1.	Distribution of School-Age Population	3
1-2.	□ Average Years of Education by Sex and Age	4
1-3.	가 Economically Active Population & Labor Force Participation Rate	5
1-4.	GDP Research & Development Expenditures in GDP	6
1-5.	(GDP) Employment and GDP Share by Industry	7
1-6.	Distribution of Employed Persons by Industry	8
1-7.	Monthly Wage Levels by Industry	9
1-8.	Inter-Industry Wage Differences	10
1-9.	Average Hours Worked per Week (by Sex and Industry)	11
1-10.	Average Number of Days Worked per Month by Industry	12
1-11.	Employees and Regular Employees in Total Employment	13
1-12.	Employment Accession Rate by Industry	14
1-13.	Employment Separation Rate by Industry	15
1-14.	, Unemployment Rate by Educational Attainment & Sex	16
1-15.	Satisfaction with Selected Working Conditions	18
1-16.	Labour Productivity Index	20

2.	Input of Vocational Education and Training	
2-1.	Number of Vocational School Entrants by Level	23
2-2.	Vocational High School Entrants by Field of Study	24
2-3.	Junior College Entrants by Field of Study	25
2-4.	Annual Participation in Adult Learning Programs by Type of Programs (Sex, Educational Attainment, and Occupation)(1996)	26
2-5.	Number of Students per Class in Vocational High Schools by School Type	28
2-6.	Number of Students per Classroom in Vocational High Schools by School Type	30
2-7.	Number of Students per Computer (Vocational High Schools vs. Academic High Schools)	32
2-8.	Classroom Area per Student in Junior Colleges & Industrial Universities	33
2-9.	Expenditures on Vocational Education in Ministry of Education Budget	34
2-10.	Annual Training & Practice Cost per Student in Polytechnic Colleges & Vocational Training Institutes	35
2-11.	Utilization of Vocational Training Promotion Fund	37

3.	Process of Vocational Education and Training	
3-1.	Number of Vocational Schools by Level	41
3-2.	Vocational High Schools by School Type	42
3-3.	Number of Vocational Training Institutions and Trades by Institution Type	44
3-4.	Public Vocational Training Institutions by Governing Agency	46

3-5.	47
	Number of Private Institutes by Field	
3-6.	48
	Number of Students enrolled in Vocational School by Level	
3-7.	49
	Enrollment in Vocational High Schools by Field of Study	
3-8.	51
	Vocational High School Enrollment vs. General High School Enrollment	
3-9.	52
	Junior College Enrollment by Field of Study	
3-10.	53
	Number of Vocational Trainees by Type of Training Institutions	
3-11.	54
	Number of Vocational Trainees by Skill Level	
3-12.	55
	Attendants of Private Institutes by Field	
3-13.	57
	Discontinuation of Study among Vocational High School Students by Reason	
3-14.	58
	Annual Mobility of Junior College Students (by Reason)	
3-15.	1	59
	Number of Students per Teacher by Vocational School Level	
3-16.	1	60
	Number of Students per Teacher in Vocational High Schools by School Type	
3-17.	62
	Provision Rates of Teachers by Vocational School Level	
3-18.	63
	Seperation Rates of Teachers by Vocational School Level	
3-19.	1	64
	Number of Students & Teachers per Clerical Staff by Vocational School Level	
3-20.	66
	Number of Instructors in Private Institute by Field	
3-21.	67
	Vocational High School Teachers by Educational Background	
3-22.	68
	Vocational High School Teachers and Their Placement in the Licenced Subject	
3-23.	69
	Type of Degrees Held by Faculty Members in Junior Colleges	
3-24.	70
	Type of Degrees Held by Faculty Members in Industrial Universities (Polytechnic Universities)	
3-25.	71
	Number of Employment Security Offices	
3-26.	72
	Job Placement by Type of Employment Security Offices (in Number & %)	

4.	Result of Vocational Education and Training	
4-1.	Number of Graduates by Vocational School Level	75
4-2.	Number of Vocational High School Graduates by School Type	76
4-3.	Junior College Graduates by Field of Study	78
4-4.	Graduates from Private Institutes by Field	80
4-5.	Advancement Rate of Vocational School Graduates to Higher Educational Institutions	82
4-6.	Advancement Rate of Vocational High School Graduates to Higher Educational Institutions	83
4-7.	Advancement Rate of Junior College Graduates to Higher Educational Institutions	84
4-8.	Advancement Rate of Industrial University Graduates to Higher Educational Institutions	85
4-9.	Employment Rates of Graduates by Vocational School Level	86
4-10.	Rate of Employment in the Major Field at Each Vocational School Level	87
4-11.	Employment Rates of Graduates from Polytechnic College & V.T.I.	88
4-12.	가 Registrants of National Qualifications of Skill (NQS) by Qualification Field	89
4-13.	가 National Qualifications of Skill (NQS) Acquisition among Voc. High School Students by Field	90
4-14.	가 National Qualifications of Skill (NQS) Acquisition among Junior College Students by Field	91
4-15.	가 National Qualifications of Skill (NQS) Acquisitions Training Institute Students	92
4-16.	Participation in National Employment Insurance Activities	93
4-17.	Participation in National Vocational Competency Development Plan	94

5. International Comparison of Vocational Education and Training

5-1. 1	97
GNP per Capita		
5-2. 1	98
GDP per Capita		
5-3.	가99
Economically Active Population & Activity Rate		
5-4.	100
Composition of Employed Persons by Industry		
5-5.	101
Unemployment Rate		
5-6.	()102
Average Hours Worked per Week in Manufacturing		
5-7. 1	103
Number of Students per Teacher		
5-8. 25-64	(1996)104
Distribution of the Population 25 to 64 Years of Age by Level of Educational Attainment (1996)		
5-9. 25-64	(1996)105
Distribution of the Labor Force 25 to 64 Years of Age by Level of Educational Attainment (1996)		
5-10.	(1996)106
Unemployment Rates of Youth by Level of Educational Attainment and Age Group (1996)		
5-11.	(1996)108
Employment/Population Rate of Youth by Level of Educational Attainment and Age Group (1996)		
5-12.	(1994)110
Human Development Index (1994)		

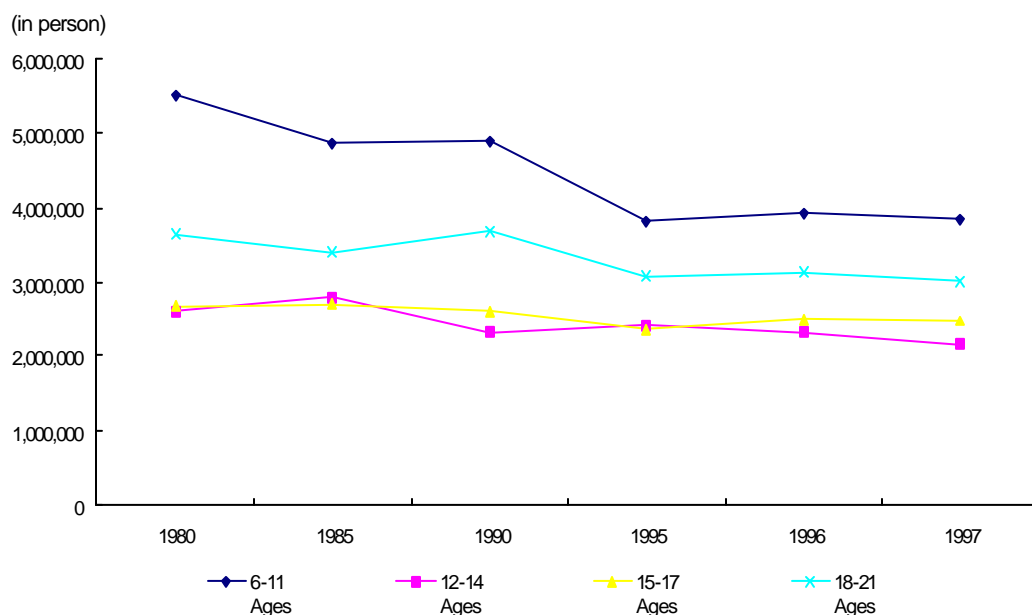
1-1. Distribution of Prime School-Age Population

In person

	6 - 11 Ages		12 - 14 Ages		15 - 17 Ages		18 - 21 Ages	
	Total	Female	Total	Female	Total	Female	Total	Female
1980	5,499,265	2,646,349	2,599,386	1,255,111	2,670,705	1,285,237	3,631,634	1,753,973
1985	4,862,906	2,353,645	2,780,223	1,347,679	2,708,942	1,313,893	3,394,665	1,640,240
1990	4,876,801	2,358,682	2,312,263	1,123,644	2,618,360	1,280,426	3,690,170	1,780,091
1995	3,824,982	1,829,759	2,414,491	1,166,369	2,371,503	1,150,797	3,070,349	1,476,018
1996	3,914,706	1,850,381	2,312,164	1,136,235	2,497,547	1,208,287	3,124,101	1,510,715
1997	3,836,160	1,816,277	2,157,944	1,038,973	2,469,001	1,196,411	3,012,794	1,488,669

Source : Korea Education Development Institute, *Educational Indicators in Korea, 1996, 1997.*

1-1G. Distribution of Prime School-Age Population



1-2. Years of Education by Sex and Age

In years

	Average	6-19 Ages	20-29 Ages	30-39 Ages	40-49 Ages	50 Ages 50 & Over
1975	6.62	6.16	8.83	8.12	6.56	2.74
Male	7.61	6.26	9.25	9.33	7.90	4.02
Female	5.70	6.08	8.41	6.88	4.75	1.72
1980	7.61	6.53	9.88	9.17	7.52	4.16
Male	8.67	6.60	10.33	10.19	9.01	5.03
Female	6.63	6.10	9.44	8.10	5.95	2.25
1985	8.58	6.71	10.96	10.12	8.52	4.55
Male	9.66	6.71	11.34	10.93	9.88	6.49
Female	7.58	6.71	10.61	9.28	7.14	3.08
1990	9.54	7.74	12.03	11.09	9.52	5.53
Male	10.55	7.70	12.26	11.78	10.64	7.56
Female	8.58	7.79	11.81	10.37	8.35	3.92
1995	10.25	6.97	12.70	12.13	10.51	6.46
Male	11.18	6.74	12.70	12.69	11.39	8.52
Female	9.37	7.22	12.70	11.56	9.58	4.81

Source : National Statistical Office,
Population & Housing Census, various years.

1-3. 가 Economically Active Population & Activity Rate

: , %

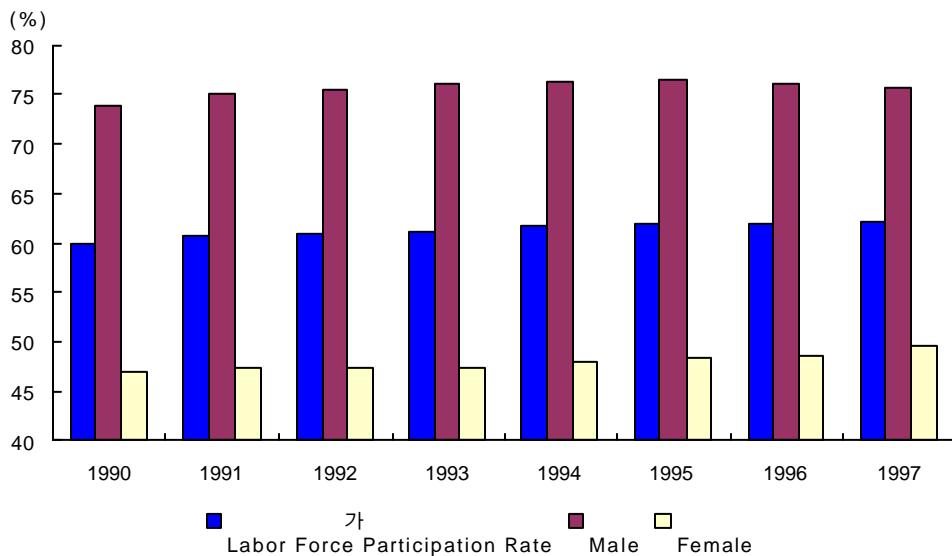
In 1,000 persons, %

	Economically Active Population	가 Labour Force Participation Rate		
		Total	Male	Female
1980	14,431	59.0	76.4	42.8
1985	15,592	56.6	72.3	41.9
1990	18,539	60.0	74.0	47.0
1991	19,048	60.6	74.9	47.3
1992	19,426	60.9	75.5	47.3
1993	19,803	61.1	76.0	47.2
1994	20,326	61.7	76.4	47.9
1995	20,797	62.0	76.5	48.3
1996	21,188	62.0	76.0	48.7
1997	21,604	62.2	75.6	49.5

: , , 1998.

Source : National Statistical Office, *Social Indicators in Korea, 1998.*

1-3G. 가 Labour Force Participation Rate by Sex



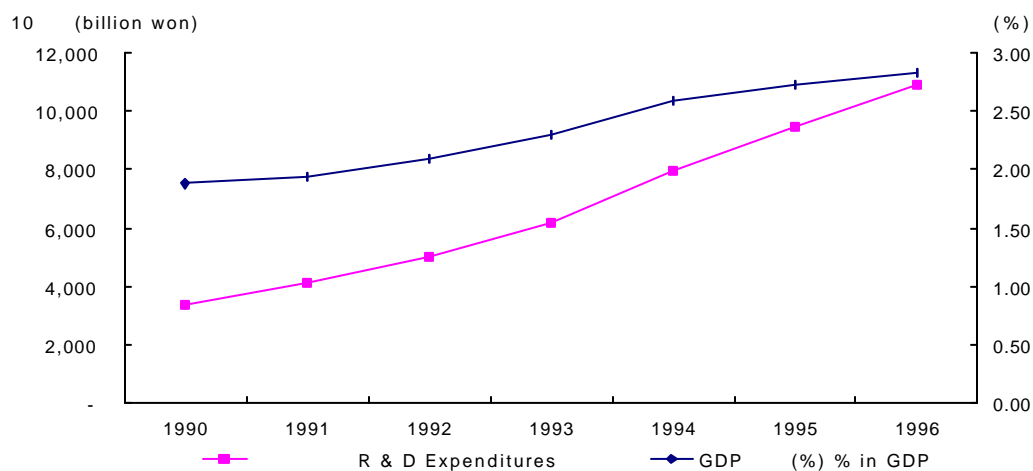
1-4. GDP Research & Development Expenditures in GDP

	Number of R & D Organizations (In Estab)				R & D Personnel (In Persons)	R & D Expenditures (In Billion Won)	GDP (%) % in GDP
	Total	R & D Institutes ¹⁾	College Univ.	Companies			
1980	647	124	202	321	18,434	183	0.74
1985	1,291	119	217	928	41,473	1,237	1.51
1990	2,105	167	220	1,718	70,503	3,350	1.87
1991	2,351	187	221	1,943	76,252	4,158	1.93
1992	3,106	212	237	2,657	88,764	4,989	2.08
1993	3,318	210	244	2,864	98,764	6,153	2.30
1994	2,640	217	244	2,179	117,446	7,895	2.58
1995	2,587	178	257	2,152	128,315	9,441	2.71
1996	2,856	163	258	2,435	132,023	10,878	2.82

Source : Ministry of Science & Technology,
Science & Technology Annual, various years.

- 1) 1983 가
Since 1983, medical institutions with R & D activities are included in total R & D organizations.
- 2)
R & D expenditures in social sciences and humanities are not covered.

1-4G. GDP Research & Development Expenditures in GDP



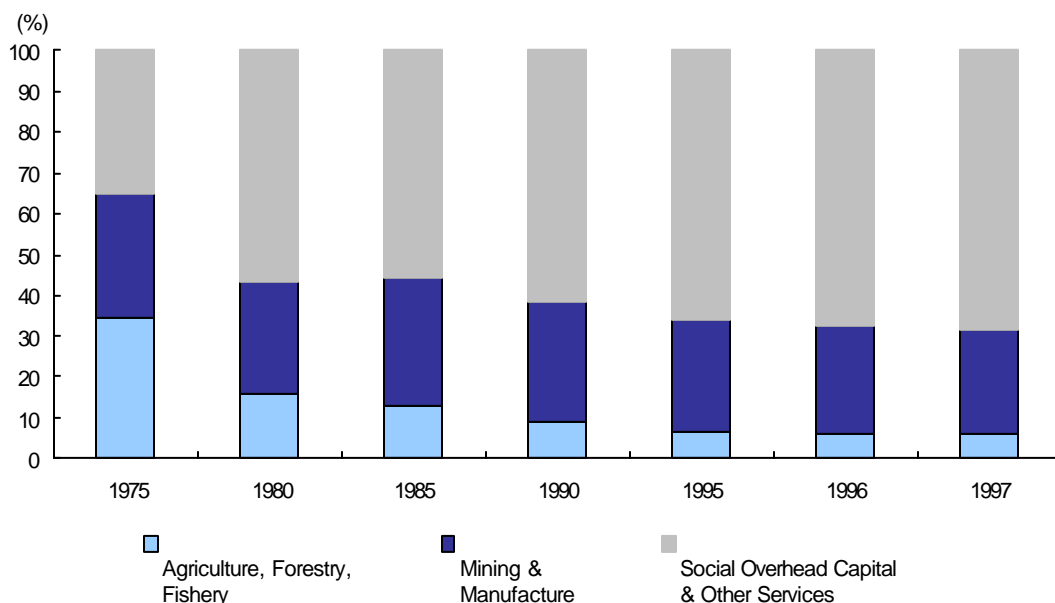
1-5. (GDP) Employment and GDP Share by Industry

: , % in 1,000 persons, %

	Employed Persons	Agriculture, Forestry, & Fishery		Mining & Manufacture		SOC & Other Services	
		GDP share	% employed in the sector	GDP share	% employed in the sector	GDP share	% employed in the sector
1975	-	34.5	45.9	30.3	19.1	35.2	35.0
1980	13,683	16.0	34.0	27.0	22.6	57.1	43.4
1985	14,970	12.8	24.9	31.4	24.4	55.8	50.6
1990	18,085	8.7	17.9	29.7	27.6	61.6	54.5
1995	20,347	6.6	12.5	27.2	23.6	66.2	64.0
1996	20,764	6.3	11.6	26.1	22.6	67.6	65.8
1997	21,048	5.7	11.0	26.0	21.4	68.3	67.6

Source : National Statistical Office, *Social Indicators in Korea*, various years.

1-5G. (GDP) Employment by Industry



1-6. Distribution of Employed Persons by Industry

: , %

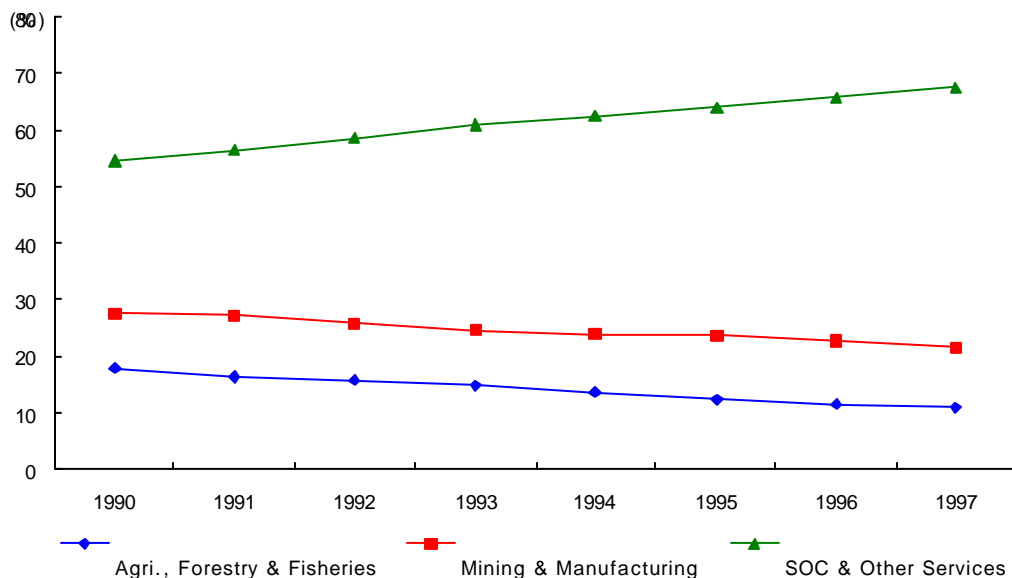
In 1,000 persons, %

	Total Employed Persons	Mining & Manufacturing			
		Agriculture, Forestry & Fishery		Manufacturing	SOC & Others
1980	13,683	34.0	22.5	21.6	43.5
1985	14,970	24.9	24.4	23.4	50.6
1990	18,085	17.9	27.6	27.2	54.5
1991	18,612	16.5	27.2	26.8	56.3
1992	18,961	15.8	25.8	25.5	58.4
1993	19,253	14.7	24.4	24.2	60.9
1994	19,837	13.6	23.9	23.7	62.5
1995	20,377	12.5	23.6	23.4	64.0
1996	20,764	11.6	22.6	22.5	65.8
1997	21,048	11.0	21.4	21.3	67.6

: , , 1998.

Source : National Statistical Office,
Social Indicators in Korea, 1998.

1-6G. Distribution of Employed Persons by Industry



1-7. Monthly Wage Levels by Industry

: , 1990 = 100

In Won, 1990 = 100

	Average	Wage Index	Mining	Manufacturing	Electricity, Gas & Water	Construction	Wholesale, Retail Restaurants & Hotels	Transport, Storage & Communications	Finance, Insurance, Real Estate &	Social & Personal Services
1980	173,150	28.1	210,800	145,019	260,298	285,955	201,786	198,549	247,370	271,817
1985	314,213	50.9	337,987	258,332	514,668	435,910	342,273	344,088	474,464	480,154
1990	616,765	100.0	620,747	563,246	900,873	761,572	628,678	590,810	767,325	771,308
1991	733,520	118.9	767,597	683,346	1,069,863	896,647	750,559	679,644	856,418	869,292
1992	866,533	140.5	877,468	787,837	1,222,965	1,056,850	861,450	873,682	1,007,289	1,002,700
1993	956,531	155.1	1,025,058	886,925	1,329,021	1,135,671	884,971	921,418	1,068,675	1,188,714
1994	1,047,735	169.9	1,096,766	980,318	1,408,209	1,240,267	962,815	1,000,674	1,149,145	1,286,658
1995	1,195,996	193.9	1,211,168	1,122,603	1,504,714	1,367,012	1,103,899	1,138,991	1,353,289	1,409,529
1996	1,352,048	219.2	1,398,240	1,266,482	1,783,413	1,484,575	1,277,427	1,299,682	1,461,303	1,571,910
1997	1,473,747	238.9	1,514,285	1,389,092	1,917,319	1,630,636	1,385,018	1,395,140	1,621,936	1,748,181

: , , 1998.

Source : National Statistical Offices, *Social Indicators in Korea*, 1998.

1-8. Inter-Industry Wage Differences

: = 100

Manufacturing = 100

	, 가							
	Mining	Manufacturing	Electricity, Gas & Water	Construction	Wholesale, Retail, Restaurants & Hotels	Transport, Storage & Communications	Finance, Insurance, Real Estate & Business Service	Social & Personal Services
1980	145.4	100.0	179.5	197.2	139.1	136.9	170.6	187.4
1985	130.8	100.0	199.2	168.7	132.5	133.2	183.7	185.8
1990	110.2	100.0	159.9	135.2	111.6	104.9	136.2	136.9
1991	112.3	100.0	156.6	131.2	109.8	99.5	125.3	127.2
1992	111.4	100.0	155.2	134.1	109.3	110.9	127.9	127.2
1993	115.6	100.0	149.8	128.0	99.8	103.9	120.5	134.0
1994	111.9	100.0	143.6	126.5	98.2	102.1	117.2	131.2
1995	107.9	100.0	134.0	121.8	98.3	101.5	120.5	125.5
1996	110.4	100.0	140.8	117.2	100.9	102.6	115.4	124.1
1997	109.0	100.0	138.0	117.4	99.7	100.4	116.8	125.9

: , , 1998.

Source : National Statistical Office, *Social Indicators in Korea*, 1998.

1-9.
Average Hours Worked per Week (by Sex and Industry)

In hours

	Whole Industry			Mining	Manufacturing	Electricity, Gas & Water	Construction	Wholesale, Retail, Restaurants & Hotels	Transport, Storage & Communications	Finance, Insurance, Real Estate & Business Service	Social & Personal Services
	Total	Male	Female								
1980	51.6	50.9	52.6	42.0	53.1	48.6	50.4	50.5	50.4	45.4	47.2
1985	51.9	51.5	52.8	41.4	53.8	50.0	49.0	50.0	53.2	45.8	46.6
1990	48.2	48.2	48.4	36.2	49.8	47.8	45.8	47.5	48.8	43.6	44.5
1991	47.9	48.0	47.8	39.5	49.3	48.6	45.6	47.8	48.7	44.2	44.6
1992	47.5	47.7	47.3	39.5	48.7	49.2	46.0	47.5	48.3	44.4	44.8
1993	47.5	47.7	47.1	40.7	48.9	48.0	46.6	46.5	47.2	45.6	44.7
1994	47.4	47.6	47.0	41.8	48.7	47.7	45.8	46.6	47.0	45.9	44.2
1995	47.8	47.9	47.1	43.6	49.2	48.9	45.8	46.3	47.7	45.6	44.4
1996	47.3	47.7	46.4	43.6	48.4	49.7	45.0	45.5	49.3	46.2	44.5
1997	46.7	47.1	45.8	43.9	47.8	49.2	44.5	44.9	48.4	45.9	44.3

Source : National Statistical Office, *Social Indicators in Korea*, 1998.

1-10.
Average Number of Days Worked per Month by Industry

In days

	Whole Industry	Mining	Manu- facturing	Electricity Gas & Water	Construction	Wholesale, Retail Restaurants & Hotels	Transport, Storage & Communications	Finance, Insurance, Real Estate & Business Service	Social & Personal Services
1980	24.6	24.7	24.8	24.7	24.9	25.7	22.3	24.7	25.0
1985	24.7	24.2	24.2	25.1	25.3	25.6	23.3	24.6	24.9
1990	24.7	22.9	24.8	25.3	25.0	25.2	24.1	24.6	24.8
1991	24.7	23.7	24.7	25.3	25.0	25.3	24.3	24.8	24.8
1992	24.7	23.5	24.6	25.5	25.1	25.3	24.1	24.7	24.9
1993	24.7	23.5	24.7	25.4	25.1	25.0	23.9	24.6	24.9
1994	24.6	23.7	24.7	25.1	25	25.1	23.8	24.6	24.8
1995	24.6	23.8	24.6	25.4	24.9	25.0	23.8	24.5	24.8
1996	24.4	24.3	24.4	25.5	24.6	24.8	24.5	24.1	24.7
1997	24.2	24.2	24.1	25.5	24.6	24.7	24.4	23.9	24.6

Source : National Statistical Offices, *Social Indicators in Korea*, 1998.

1-11. 1) 2)
Employees and Regular Employees in Total Employment

: , %

In 1,000 persons, %

	Total Employment	Employees	Percentage of employees						Stable employment rate		
			Total	Male	Female	Agri., Forestry & Fishery	Mining & Manufacturing	SOC & Other Services	Total	Male	Female
1980	13,683	6,464	47.2	52.2	39.2	11.8	79.9	58.1	79.9	80.4	78.8
1985	14,970	8,104	54.1	58.0	48.2	11.7	86.1	59.6	82.8	85.8	77.3
1990	18,085	10,950	60.5	63.1	56.8	7.8	86.9	64.6	83.2	86.9	77.2
1991	18,612	11,349	61.0	63.4	57.4	7.3	85.6	64.8	83.9	86.6	79.4
1992	18,961	11,568	61.0	63.3	57.5	7.2	84.6	65.1	84.7	86.9	81.0
1993	19,253	11,751	61.0	63.5	57.4	6.9	84.9	64.5	85.4	87.4	82.1
1994	19,837	12,297	62.0	64.2	58.7	6.7	85.0	65.2	85.6	87.3	82.9
1995	20,377	12,736	62.5	64.8	59.1	7.1	84.6	65.2	85.9	87.5	83.2
1996	20,764	13,043	62.8	65.0	59.6	6.6	64.2	65.4	86.2	87.7	83.9
1997	21,048	13,228	62.8	64.8	60.1	6.8	83.0	65.6	85.7	87.3	83.2

: , , 1998.

Source : National Statistical Office, *Social Indicators in Korea, 1998*.

1)
$$= \left(\frac{\quad}{\quad} \right) * 100$$

Stable employment rate = (Regular employees/Total employees) * 100

2)
$$= \left(\frac{\quad}{\quad} \right) * 100$$

Percentage of employees = (Employees/Total employed persons) * 100

1-12. 1)

Employment Accession Rate by Industry

: %

%

	Average	Mining	Manufacturing	Electricity, Gas & Water	Construction	Wholesales, Retail, Restaurants & Hotels	Transport, Storage & Communications	Finance, Insurance, Real Estate & Business Services	Social & Personal Services
1980	4.4	3.8	4.9	1.7	4.9	3.2	3.5	2.6	2.3
1985	3.7	3.2	4.3	1.5	3.7	3.1	2.9	2.0	1.9
1990	3.0	2.6	3.3	1.4	3.1	3.2	2.3	2.4	2.1
1991	3.1	2.4	3.5	1.3	2.9	3.3	2.4	2.8	1.9
1992	3.0	2.6	3.3	1.4	2.8	3.2	2.6	2.7	1.8
1993	3.0	3.2	3.4	0.8	3.9	3.0	2.8	2.4	1.5
1994	2.9	2.2	3.2	1.0	3.5	3.1	2.6	2.5	1.5
1995	2.8	2.0	3.0	1.5	3.6	3.2	2.7	2.6	1.6
1996	2.8	2.6	2.9	1.0	3.8	3.2	2.3	2.6	1.8
1997	2.3	1.9	2.5	0.8	2.6	2.7	2.0	2.1	1.6

: , , 1998.

Source : National Statistical Offices, *Social Indicators in Korea*, 1998.

$$1) = \{ \text{Wage earners placed during a given month} / (\text{Wage earners at the end of the previous month} + \text{Those at the end of the given month}) / 2 \} * 100$$

Employment accession rate = {Wage earners placed during a given month / (Wage earners at the end of the previous month + Those at the end of the given month)/2} * 100

1-13. 1)

Employment Separation Rate by Industry

: %

%

	Average	Mining	Manufacturing	Electricity, Gas & Water	Construction	Wholesales, Retail, Restaurants & Hotels	Transport, Storage & Communications	Finance, Insurance, Real Estate & Business Services	Social & Personal Services
1980	4.8	3.7	5.6	1.5	4.9	3.5	3.8	2.5	2.0
1985	3.9	3.1	4.5	1.3	4.7	3.1	3.0	2.2	1.7
1990	3.2	3.2	3.8	0.8	2.4	3.2	2.2	2.1	1.7
1991	3.3	3.7	3.9	1.0	2.3	3.3	2.4	2.3	1.8
1992	3.2	3.6	3.9	1.0	2.5	3.3	2.5	2.5	1.7
1993	3.1	3.6	3.6	1.0	4.0	3.2	2.6	2.4	1.4
1994	2.9	3.1	3.1	1.0	3.4	3.2	2.7	2.5	1.4
1995	2.9	2.8	3.1	1.1	3.6	3.4	2.6	2.4	1.4
1996	2.9	2.6	3.1	0.9	4.0	3.5	2.3	2.5	1.6
1997	2.7	2.7	2.9	0.9	3.0	3.1	2.2	2.3	1.5

: , , 1998.

Source : National Statistical Offices, *Social Indicators in Korea*, 1998.

1) = { / (+) / 2 } * 100

Employment separation rate = {Wage earners displaced during a given month / (Wage earners at the end of the previous month + Those at the end of the given month) / 2} * 100

1-14. , 1)
Unemployment Rate by Educational Attainment and Sex

: %

%

	Total			Primary School Graduates & Under			Middle School Graduates			High School Graduates			College, University Graduates & Over		
	Total	Male	Female	Total	Male	Female	Total	Male	Female	Total	Male	Female	Total	Male	Female
1980	5.2	6.2	3.5	2.7	3.9	1.4	6.3	7.4	4.2	9.3	8.8	10.7	6.2	5.6	9.2
1985	4.0	5.0	2.4	1.5	2.6	0.6	4.1	5.3	1.8	5.9	6.3	5.0	6.6	5.9	10.1
1990	2.4	2.9	1.8	0.7	1.2	0.3	1.8	2.3	1.1	3.4	3.5	3.1	4.4	4.1	5.3
1991	2.3	2.5	1.9	0.6	1.1	0.3	1.7	2.0	1.2	3.2	3.1	3.5	3.6	3.3	4.5
1992	2.4	2.6	2.1	0.6	1.0	0.3	1.9	2.3	1.4	3.3	3.3	3.5	3.4	3.0	4.7
1993	2.8	3.2	2.2	0.8	1.3	0.4	2.2	2.7	1.5	3.6	3.7	3.3	4.0	3.7	4.7
1994	2.4	2.7	1.9	0.8	1.2	0.5	1.9	2.4	1.2	3.0	3.1	2.7	3.6	3.3	4.2
1995	2.0	2.3	1.7	0.7	1.2	0.4	1.6	2.0	1.0	2.5	2.6	2.4	2.7	2.5	3.3
1996	2.0	2.3	1.6	0.7	1.1	0.4	1.6	1.9	1.2	2.5	2.7	2.1	2.6	2.5	2.9
1997	2.6	2.8	2.3	1.0	1.5	0.6	2.2	2.5	1.7	3.3	3.3	3.3	3.0	2.6	3.7

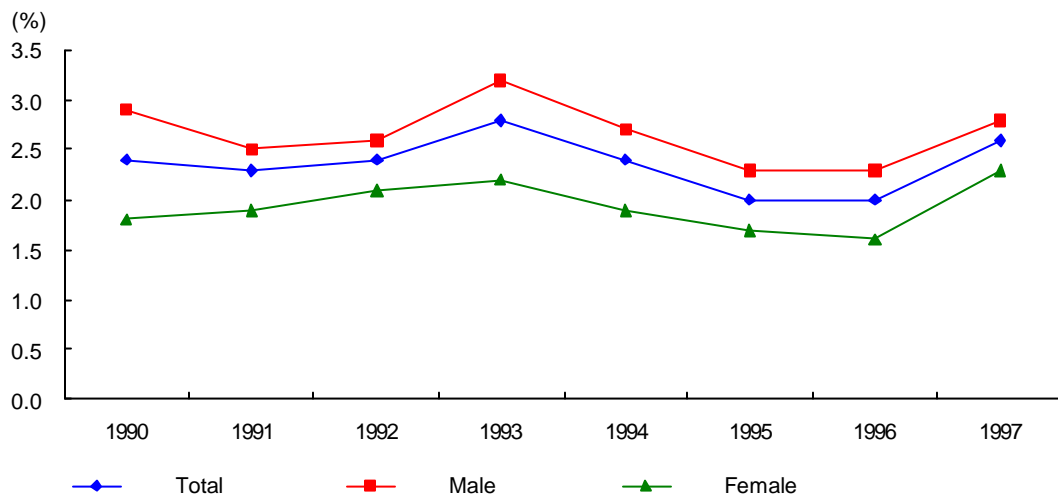
Source : National Statistical Office, *Social Indicators in Korea*, 1998.

1) : , , 1998.

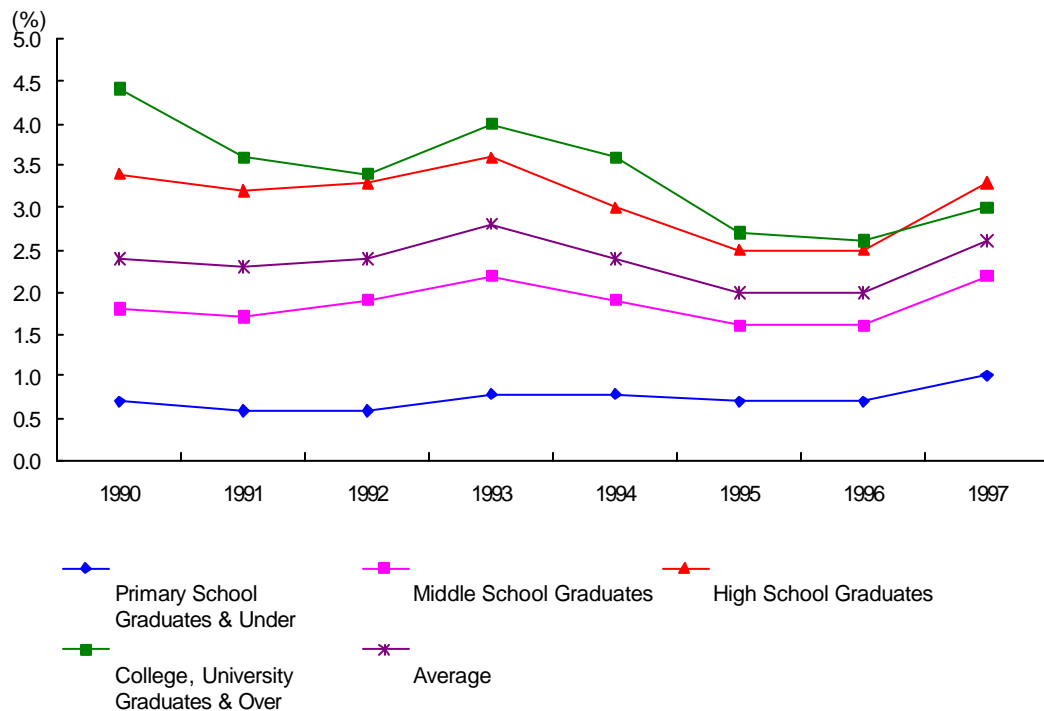
$$1) = \left(\frac{\quad}{\quad} \right) * 100$$

Unemployment rate = (Unemployed persons/Economically active population) * 100

1-14G1. Unemployment Rate by Sex



1-14G2. Unemployment Rate by Educational Attainment



1-15.

Satisfaction with Selected Working Conditions

: %

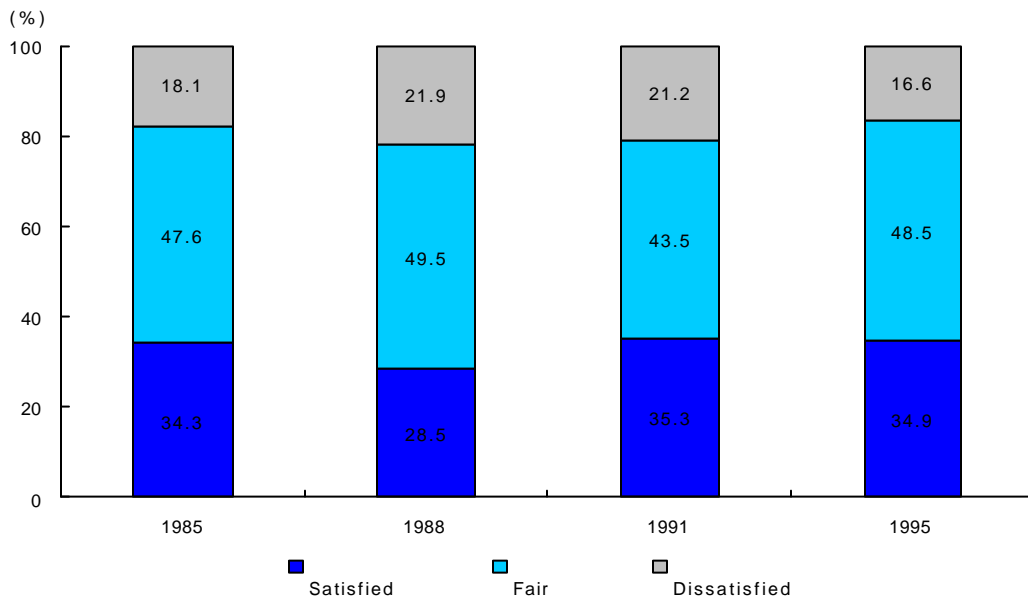
%

	Type of Work			Wages		
	Satisfied	Fair	Dissatisfied	Satisfied	Fair	Dissatisfied
1985	34.3	47.6	18.1	19.1	36.3	44.6
1988	28.5	49.5	21.9	14.6	38.7	46.7
1991	35.3	43.5	21.2	16.1	35.1	48.8
1995	34.9	48.5	16.6	17.2	40.6	42.2
by Sex (1995)						
Male	36.6	47.8	16.6	17.5	40.2	42.3
Female	32.1	51.3	16.6	16.7	41.2	42.1
by Occupation (1995)						
Pro., Tech., Adm., Managers	60.1	33.2	6.8	25.1	42.3	32.6
Clerical	42.2	46.5	11.3	20.5	40.9	38.6
Service, Sales	27.2	52.4	20.4	14.1	42.1	43.8
Skilled Agri., Fishery	16.8	47.7	35.5	14.8	37.7	47.5
Craft, Operator, Laborers	23.6	54.8	21.7	13.5	39.3	47.2

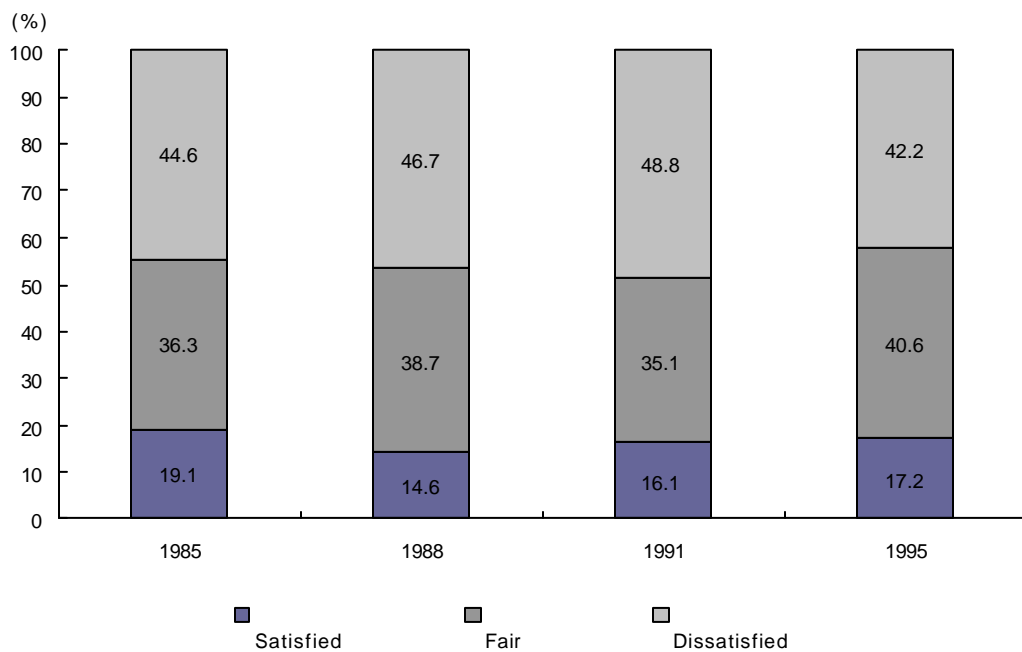
: , , 1998.

Source : National Statistical Office,
Social Indicators in Korea, 1998.

1-15G1. Satisfaction with Type of Work



1-15G2. Satisfaction with Wage



1-16. Labour Productivity Index

: 1995 = 100, %

1995 = 100, %

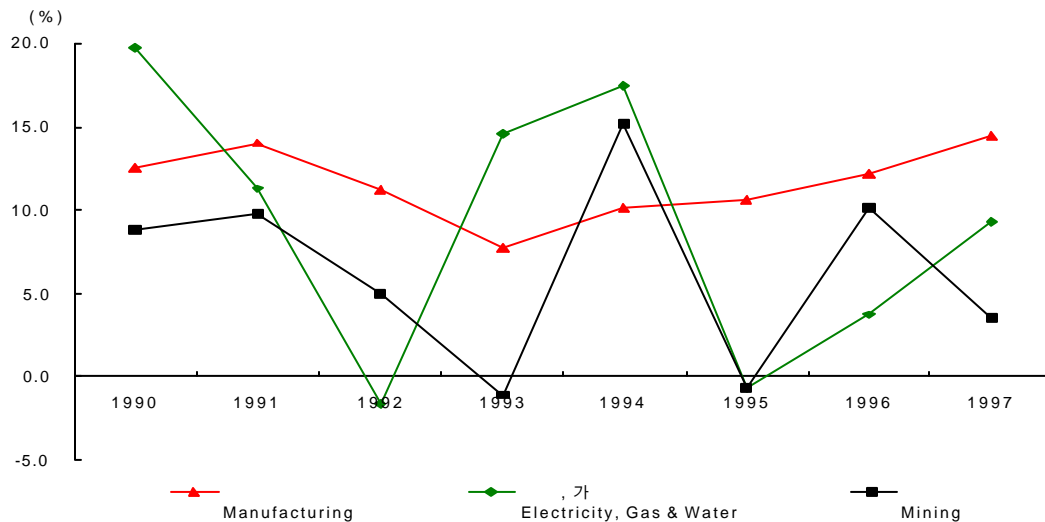
	Total		Mining		Manufacturing		Electricity, Gas & Water	
	Index	Growth Rate	Index	Growth Rate	Index	Growth Rate	Index	Growth Rate
1980	28.7	-2.7	53.3	-9.1	28.0	-4.4	38.6	-9.4
1985	38.8	2.1	56.7	8.4	38.5	1.9	43.1	-5.5
1990	60.1	12.8	76.7	8.8	60.1	12.5	68.4	19.8
1991	68.5	13.9	84.2	9.8	68.5	14.0	76.1	11.3
1992	76.0	11.0	88.5	5.0	76.2	11.2	74.9	-1.6
1993	82.1	8.0	87.5	-1.1	82.1	7.7	85.8	14.6
1994	90.5	10.2	100.7	15.1	90.4	10.1	100.7	17.4
1995	100.0	10.5	100.0	-0.7	100.0	10.6	100.0	0.7
1996	112.2	12.2	110.1	10.1	112.1	12.1	103.7	3.7
1997	128.4	14.4	114.1	3.6	128.3	14.5	113.4	9.3

: , , 1998.

Source : National Statistical Office, Social Indicators in Korea, 1998.

1) Based on Labor productivity index for regular employees

1-16G. Growth Rate of Labour Productivity Index



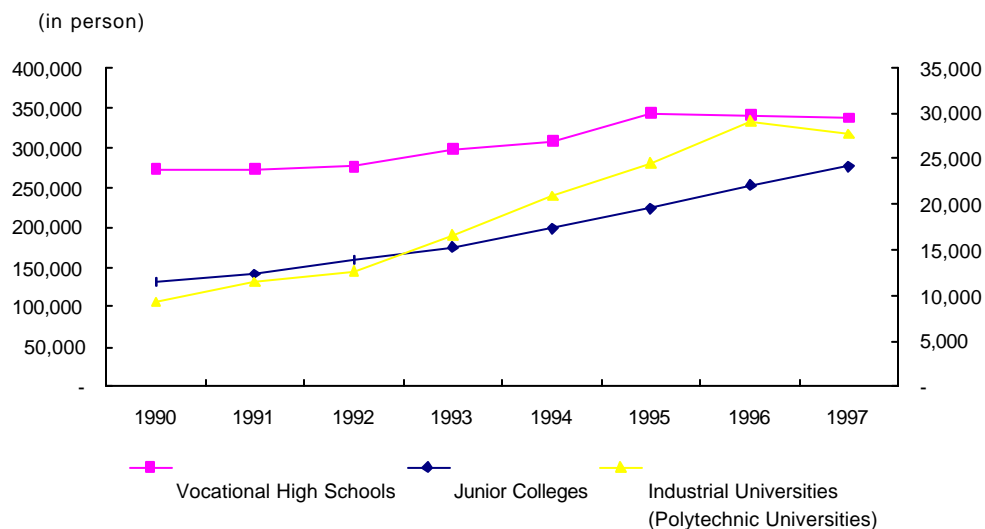
2-1. Number of Vocational School Entrants by Level

In person

	Vocational High Schools		Junior Colleges		Industrial Universities (Polytechnic Universities)	
	Total	Female	Total	Female	Total	Female
1980	284,735	122,407	80,620	22,728	-	-
1985	306,535	152,872	108,483	44,112	5,509	-
1990	273,134	142,926	130,670	60,101	9,221	-
1991	272,010	142,819	141,115	65,313	11,418	-
1992	277,079	144,244	159,432	74,300	12,679	-
1993	298,648	155,502	174,964	82,214	16,698	-
1994	307,528	159,317	197,143	94,515	20,896	-
1995	343,799	179,791	223,689	111,552	24,571	6,749
1996	341,601	174,206	252,868	127,784	29,106	7,928
1997	336,609	169,211	276,231	135,192	27,837	7,475

Source : Ministry of Education,
Statistical Yearbook of Education, various years.

2-1G. Number of Vocational School Entrants by Level



2-2. Vocational High School Entrants by Field of Study

: , (%)

In person, (%)

	가							
	Total	Agriculture	Industry	Commerce	Fishery & Marine	Housekeeping & Practical Arts	Humanities	Arts
1985	306,535 (100.0)	22,439 (7.3)	77,978 (25.4)	163,362 (53.3)	3,904 (1.3)	1,427 (0.5)	37,425 (12.2)	– –
1990	273,134 (100.0)	17,417 (6.4)	67,977 (24.9)	151,739 (55.6)	3,444 (1.3)	209 (0.1)	31,234 (11.4)	1,114 (0.4)
1991	272,020 (100.0)	14,048 (5.2)	74,641 (27.4)	149,626 (55.0)	3,122 (1.1)	202 (0.1)	28,929 (10.6)	1,452 (0.5)
1992	277,079 (100.0)	11,536 (4.2)	85,471 (30.8)	147,740 (53.3)	2,551 (0.9)	785 (0.3)	28,755 (10.4)	241 (0.1)
1993	297,872 (100.0)	11,566 (3.9)	97,731 (32.8)	150,871 (50.6)	2,487 (0.8)	1,708 (0.6)	33,203 (11.1)	306 (0.1)
1994	307,528 (100.0)	11,467 (3.7)	108,502 (35.3)	150,172 (48.8)	2,680 (0.9)	1,352 (0.4)	33,099 (10.8)	256 (0.1)
1995	343,799 (100.0)	12,533 (3.6)	123,229 (35.8)	167,669 (48.8)	2,909 (0.8)	2,124 (0.6)	34,828 (10.1)	507 (0.1)
1996	341,601 (100.0)	12,868 (3.8)	127,606 (37.4)	160,925 (47.1)	2,730 (0.8)	2,173 (0.6)	34,807 (10.2)	492 (0.1)
1997	336,609 (100.0)	12,465 (3.7)	129,804 (38.6)	156,672 (46.5)	2,611 (0.8)	2,234 (0.7)	32,275 (9.6)	548 (0.2)

Source : Ministry of Education,
Statistical Yearbook of Education, various years.

2-3. Junior College Entrants by Field of Study

: , (%)

In person, (%)

	Total	Humanities	Social Sciences	Natural Sciences	Medical & Pharmacy	Arts & Physical Ed.	Teaching Profession
1980	80,620 (100.0)	– –	8,882 (11.0)	60,893 (75.5)	7,374 (9.1)	3,471 (4.3)	– –
1985	108,486 (100.0)	2,506 (2.3)	21,959 (20.2)	53,342 (49.2)	13,716 (12.6)	9,307 (8.6)	7,653 (7.1)
1990	130,670 (100.0)	4,941 (3.8)	25,707 (19.7)	64,610 (49.4)	14,812 (11.3)	13,598 (10.4)	7,002 (5.4)
1991	141,115 (100.0)	5,423 (3.8)	28,658 (20.3)	69,488 (49.2)	15,377 (10.9)	15,130 (10.7)	7,039 (5.0)
1992	159,432 (100.0)	6,742 (4.2)	33,415 (21.0)	78,170 (49.0)	17,294 (10.8)	16,771 (10.5)	7,040 (4.4)
1993	174,964 (100.0)	7,525 (4.3)	39,401 (22.5)	84,232 (48.1)	17,298 (9.9)	19,467 (11.1)	7,041 (4.0)
1994	197,143 (100.0)	9,462 (4.8)	44,161 (22.4)	94,644 (48.0)	18,101 (9.2)	22,786 (11.6)	7,989 (4.1)
1995	223,689 (100.0)	11,433 (5.1)	49,978 (22.3)	106,400 (47.6)	20,766 (9.3)	26,263 (11.7)	8,849 (4.0)
1996	252,868 (100.0)	12,475 (4.9)	56,249 (22.2)	121,841 (48.2)	22,349 (8.8)	29,618 (11.7)	10,336 (4.1)
1997	276,231 (100.0)	13,467 (4.9)	62,110 (22.5)	133,460 (48.3)	23,563 (8.5)	33,148 (12.0)	10,483 (3.8)

Source : Ministry of Education,
Statistical Yearbook of Education, various years.

2-4.

(, ,)
(1996)

: , %

	Participation Workplace Training		Institute Training		Educational Program		
	Rate	Day	Rate	Day	Rate	Day	
	17.37	9.08	1.12	3.47	2.71	3.13	0.54
	21.62	13.18	1.66	3.35	2.46	2.45	0.23
	13.49	5.34	0.62	3.58	2.94	3.74	0.82
	4.28	0.54	0.05	0.17	0.14	0.82	0.14
	8.29	2.32	0.15	0.66	0.41	1.83	0.23
	18.53	9.07	0.93	3.52	2.69	3.60	0.56
	41.82	27.54	3.97	10.68	8.57	6.55	1.32
	44.56	32.50	4.67	9.43	7.51	6.69	1.11
	39.53	29.33	3.51	11.49	9.45	4.17	0.77
	11.38	4.49	0.48	1.77	1.32	2.31	0.33
	13.67	0.27	0.02	0.30	0.20	1.65	0.10
	12.67	7.15	0.68	1.59	0.98	1.62	0.17

: , , 1996.

2-4. Annual Participation in Adult Learning Programs by Type of Programs (Sex, Educational Attainment, and Occupation)(1996)

days, %

Vocational Training		TV, Massmedia Lecture		Others		
Rate	Day	Rate	Day	Rate	Day	
2.24	0.20	3.79	1.07	0.38	0.10	Total
By Sex						
3.73	0.28	3.78	1.00	0.42	0.12	Male
0.88	0.13	3.79	1.13	0.35	0.09	Female
By Educational Attainment						
2.38	0.07	0.59	0.09	0.08	0.01	Primary School Graduates & Under
2.39	0.19	2.09	0.34	0.22	0.04	Middle School Graduates
2.19	0.26	8.87	3.21	1.23	0.40	High School Graduates
2.01	0.26	8.87	3.21	1.23	0.40	College, Univ. Graduates & Over
By Occupation						
2.35	0.27	8.26	3.22	1.19	0.41	Prof., Tech., Adm., Managerial
1.88	0.38	5.30	1.84	0.67	0.17	Clerical
1.65	0.11	2.85	0.55	0.17	0.02	Services, Sales
11.61	0.39	1.24	0.17	0.05	0.00	Skilled Agri., Fishery
1.86	0.26	2.73	0.60	0.23	0.06	Craft, Operator, Laborers

Source : National Statistical Office, *Report on the Social Statistics Survey, 1996.*

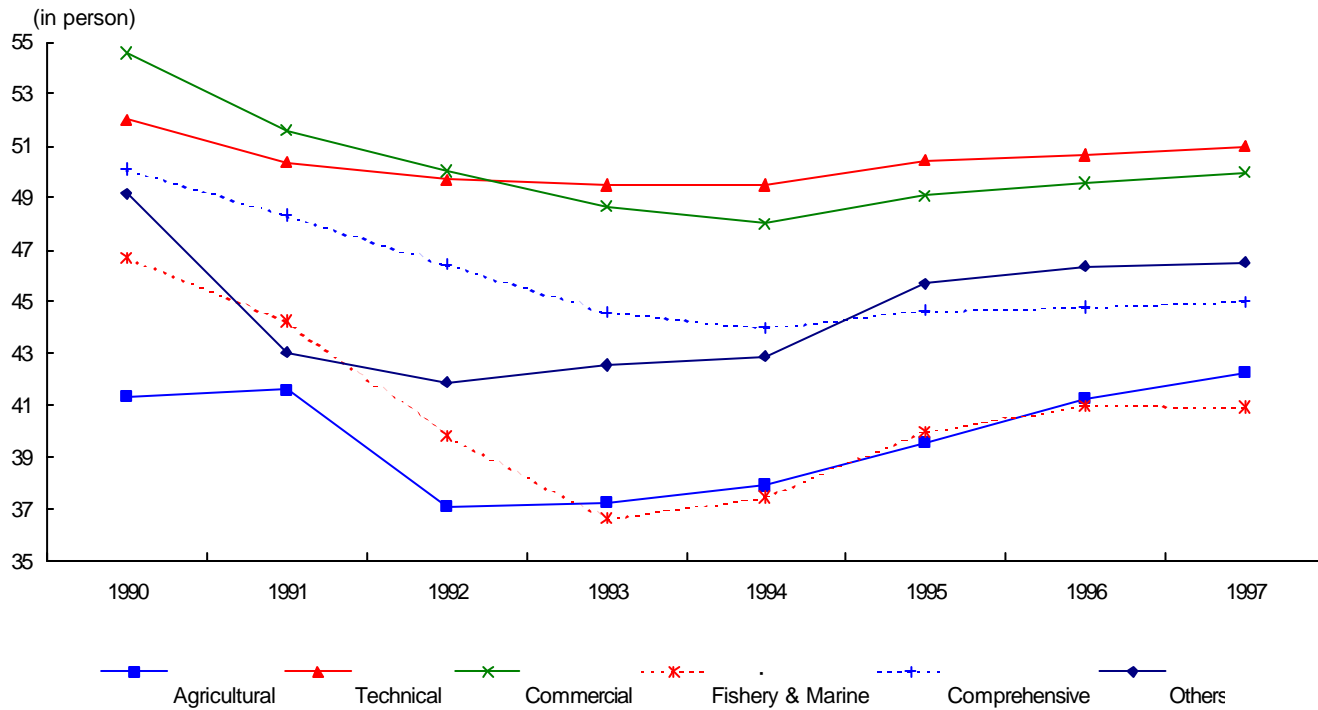
2-5.
Number of Students per Class in Vocational High Schools by School Type

In person, Each

	Total		Agricultural		Technical		Commercial		Fishery & Marine		Comprehensive		Vocational	
	Classes	Students per Class	Classes	Students per Class	Classes	Students per Class	Classes	Students per Class	Classes	Students per Class	Classes	Students per Class	Classes	Students per Class
1985	15,958	321	1,098	47	3,574	55	6,618	57	197	51	3,712	55	759	55
1990	15,737	320	984	50	3,692	54	6,908	66	200	50	3,613	50	340	49
1991	16,190	305	891	49	3,823	53	7,089	63	194	48	3,717	48	476	43
1992	16,922	291	859	44	4,041	55	7,174	61	188	43	4,015	46	645	42
1993	17,651	259	630	37	4,584	50	7,201	49	134	37	4,126	45	976	43
1994	18,197	260	512	38	5,014	50	7,156	48	150	37	4,225	44	1,140	43
1995	19,034	269	539	40	5,426	50	7,242	49	170	40	4,219	45	1,438	46
1996	19,430	274	498	41	5,875	51	7,267	50	186	41	4,122	45	1,482	46
1997	19,689	276	524	42	6,236	51	7,302	50	182	41	3,955	45	1,490	46

Source : Ministry of Education, *Statistical Yearbook of Education*, various years.

2-5G.
 Number of Students per Class in Vocational High Schools by School Type



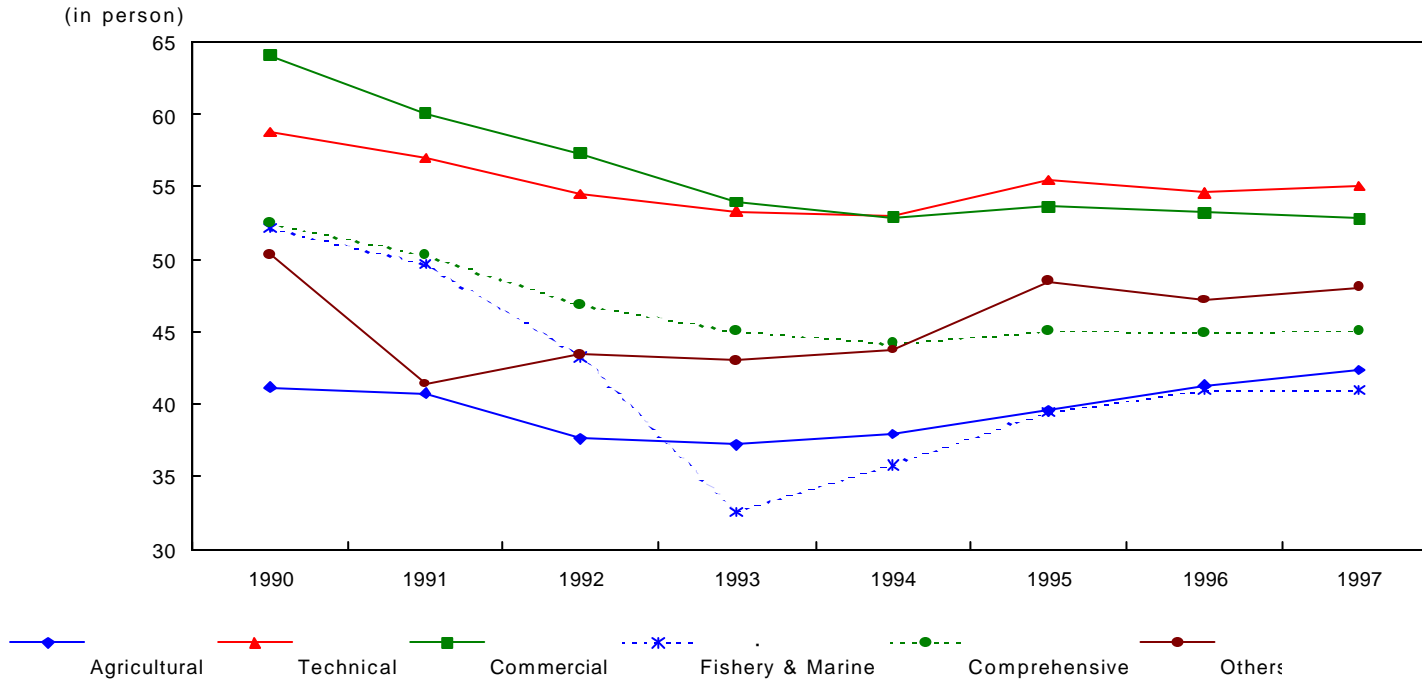
2-6.
Number of Students per Classroom in Vocational High Schools by School Type

In person, Each

	Total		Agricultural		Technical		Commercial		Fishery & Marine		Comprehensive		Vocational	
	Students per Classroom	Number of Classrooms	Students per Classroom	Number of Classrooms	Students per Classroom	Number of Classrooms	Students per Classroom	Number of Classrooms	Students per Classroom	Number of Classrooms	Students per Classroom	Number of Classrooms	Students per Classroom	Number of Classrooms
1985	63.5	13,945	46.6	1,373	55.4	4,031	56.9	8,393	49.8	216	–	–	54.6	89
1990	57.9	14,009	39.8	1,245	51.9	3,823	53.3	8,527	45.9	220	52	3,456	53.4	11
1991	55.0	14,625	38.0	1,161	50.3	4,049	51.4	8,647	43.6	213	50	3,575	51.3	11
1992	52.2	15,569	35.6	1,063	49.5	4,481	49.6	8,815	39.1	208	47	3,978	48.5	47
1993	50.2	16,584	34.0	974	49.2	5,071	48.2	9,009	35.5	198	45	4,078	48.5	71
1994	49.6	17,170	33.7	923	49.1	5,700	47.5	9,117	35.6	185	44	4,195	46.1	71
1995	51.2	17,815	36.2	895	50.0	6,307	48.4	9,272	38.4	185	45	4,186	49.6	97
1996	50.8	18,484	38.5	876	50.2	6,756	48.7	9,299	39.7	189	45	4,115	51.0	108
1997	51.0	18,806	39.8	870	50.4	7,117	49.6	9,209	39.4	185	45	3,955	51.2	122

Source : Ministry of Education, *Statistical Yearbook of Education*, various years.

2-6G.
 Number of Students per Classroom in Vocational High Schools by School Type



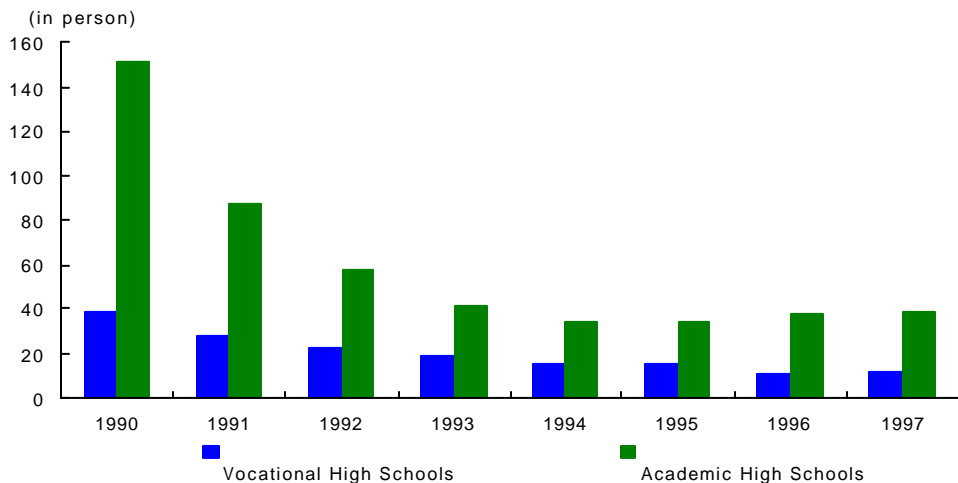
2-7. PC PC 1
Number of Students per Computer
(Vocational High Schools vs. Academic High Schools)

In holdings

	Vocational High Schools		Academic High Schools	
	Total Computer	Students per Computer	Total Computer	Students per Computer
1990	21,081	38.5	9,748	151.1
1991	28,847	27.9	16,076	87.5
1992	36,948	22.0	22,859	57.4
1993	44,908	18.5	29,612	41.8
1994	57,214	14.9	35,376	34.2
1995	60,827	15.0	36,045	34.6
1996	85,220	11.0	35,227	37.0
1997	85,220	11.3	35,227	39.1

Source : Ministry of Education,
Statistical Yearbook of Education, various years.

2-7G. PC 1
Number of Students per Computer
(Vocational High Schools vs. Academic High Schools)



2-8.

1

Classroom Area per Student in Junior Colleges & Industrial Universities

: m²m²

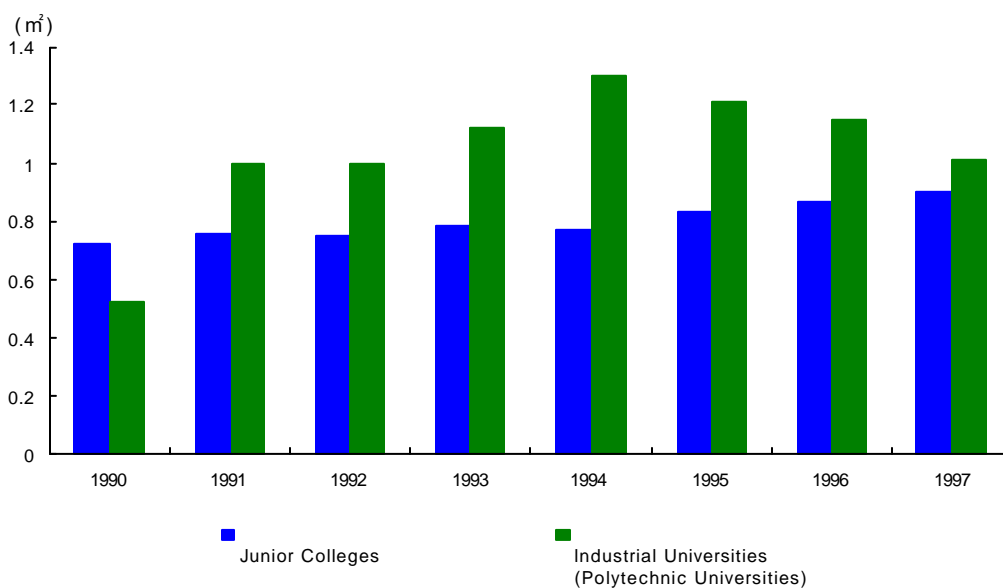
	Junior Colleges		Industrial Universities (Polytechnic Universities)	
	1	1	1	1
	Area per Student	Total Area	Area per Student	Total Area
1990	0.72	448,308	0.52	99,428
1991	0.76	472,928	1.00	57,266
1992	0.75	541,814	1.00	70,073
1993	0.78	587,225	1.12	74,994
1994	0.77	661,475	1.30	77,746
1995	0.83	683,700	1.21	100,116
1996	0.87	736,632	1.15	123,288
1997	0.90	802,597	1.01	139,706

Source : Ministry of Education,
Statistical Yearbook of Education, various year.

2-8G.

1

Classroom Area per Student in Junior Colleges & Industrial Universities



2-9.

Expenditures on Vocational Education in Ministry of Education Budget

: 1,000 , %

In 1,000 Won, %

	Budget Accounts of MOE	Budget of Vocational Education	Rate
1980	1,187,804,408	55,911,529	4.7
1985	2,566,041,041	90,987,812	3.5
1990	6,168,974,911	192,889,998	3.1
1991	7,618,642,936	195,439,640	2.6
1992	8,946,973,128	221,080,476	2.5
1993	10,224,807,015	223,492,256	2.2
1994	11,278,941,616	235,859,563	2.1
1995	13,216,474,042	297,754,240	2.3
1996	16,073,791,813	338,690,318	2.1
1997	18,939,884,505	363,191,386	1.9

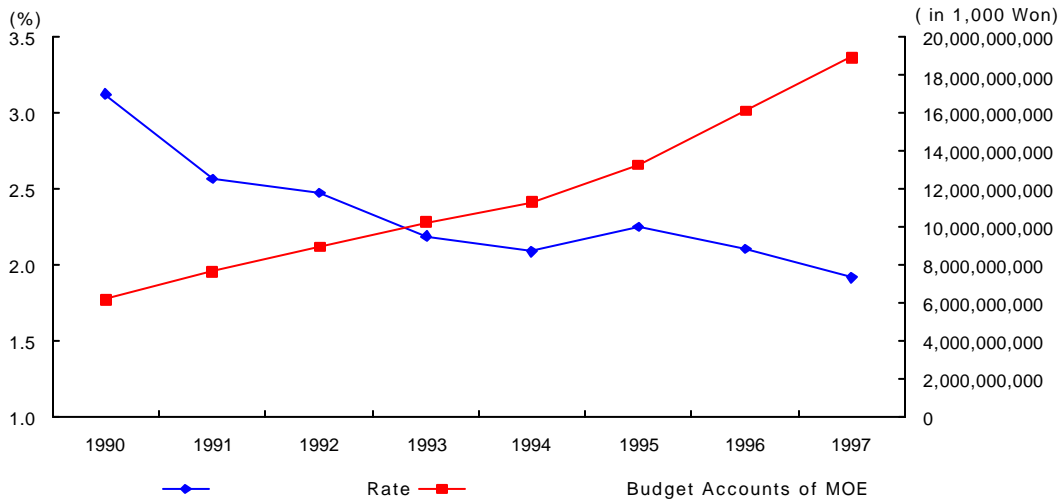
Source : Ministry of Education,

Statistical Yearbook of Education, various years.

1)
$$\text{Rate of vocational education budget} = \left(\frac{\text{Budget of vocational education budget}}{\text{Budget accounts of MOE}} \right) * 100$$

2-9G.

Expenditures on Vocational Education in Ministry of Education Budget



2-10.

1

Annual Training & Practice Cost per Student in Polytechnic Colleges & Vocational Training Institutes

	In Won			
	1)		2)	
	Polytechnic Colleges		Vocational Training Institutes	
	Training Cost	Practice Cost	Training Cost	Practice Cost
1980	-	-	676,386	114,323
1981	-	-	791,553	131,864
1982	-	-	1,249,041	150,848
1983	2,987,146	135,198	1,410,884	166,211
1984	3,283,196	228,334	1,509,717	205,218
1985	3,302,953	218,388	1,619,073	202,125
1986	3,549,638	218,388	1,738,400	201,093
1987	3,674,377	220,303	1,840,672	205,816
1988	3,838,904	215,703	2,122,063	204,111
1989	3,781,873	199,287	2,061,752	187,951
1990	4,045,807	199,287	2,175,571	187,641
1991	4,031,534	215,720	2,220,292	181,988
1992	4,061,797	216,847	2,278,783	201,094
1993	3,938,255	231,385	2,562,107	225,275
1994	4,086,410	230,257	2,945,596	224,954
1995	5,304,045	265,580	4,040,081	283,640
1996	6,060,800	271,246	4,930,600	304,219
1997	6,081,230	239,883	5,543,680	327,966

Source : Ministry of Labour,
Yearbook of Vocational Training, various years.

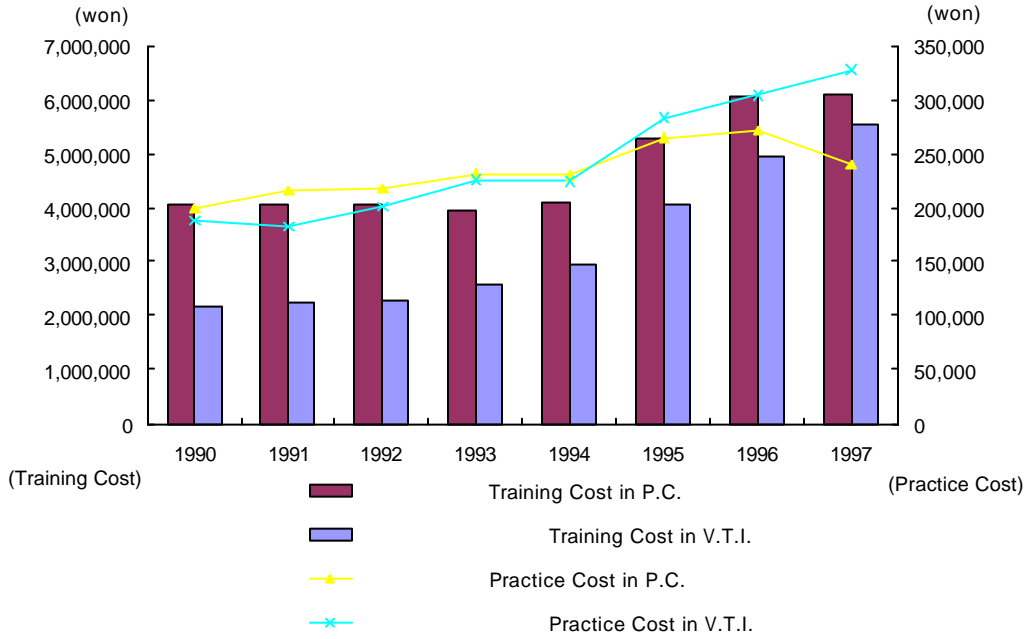
1) 1994

Until 1994, the cost of polytechnic colleges is based on the cost of Changwon Polytechnic College.

2) 1991

Until 1991, the cost of vocational training institutes is based on the cost of vocational training institutes under Korea Manpower Agency.

Annual Training & Practice Cost per Student in Polytechnic Colleges and Vocational Training Institutes



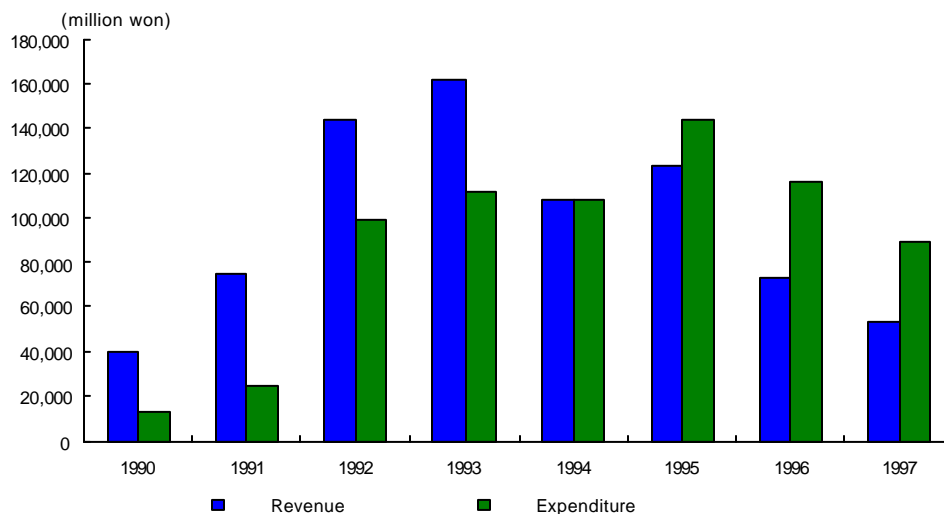
2-11. Utilization of Vocational Training Promotion Fund

In million Won

	Revenue		Expenditure				Surplus		
	Total	Mandatory Firm Contributions	Total	Skilled Manpower Training	R & D	Vocational Training Facilities	Others	the year	Accumulative
1980	3,916	3,181	3,219	2,040	806	—	373	697	4,181
1985	8,860	6,878	2,747	2,008	543	—	196	6,113	21,922
1990	39,994	29,557	12,848	4,299	1,332	6,855	362	27,146	89,243
1991	74,996	61,044	24,317	4,422	1,450	17,575	870	50,679	139,922
1992	143,515	116,590	98,686	8,893	1,806	86,058	1,929	44,829	184,751
1993	161,285	129,881	112,233	18,149	1,916	88,900	3,268	49,052	233,803
1994	108,356	69,812	107,638	16,892	2,364	81,168	7,214	718	234,521
1995	123,318	82,030	143,707	21,347	2,718	113,519	6,123	20,389	214,132
1996	72,764	41,635	116,343	22,962	3,258	83,851	6,272	43,579	170,553
1997	53,925	32,324	89,699	41,688	3,056	37,070	7,885	35,774	134,799
Total	883,368	642,456	748,589	164,166	26,470	520,318	37,635		134,739

Source : Ministry of Labour,
Yearbook of Vocational Training, various years.

2-11G. Utilization of Vocational Training Promotion Fund



3-1. Number of Vocational Schools by Level

Year	In each		
	Vocational High Schools	Junior Colleges	Industrial Universities (Polytechnic Universities)
1980	605	128	–
1981	621	132	–
1982	626	128	–
1983	639	130	–
1984	644	122	4
1985	635	120	6
1986	631	120	6
1987	594	119	6
1988	590	119	6
1989	588	117	6
1990	587	117	6
1991	617	118	8
1992	677	126	8
1993	718	128	12
1994	738	135	14
1995	762	145	17
1996	771	152	18
1997	771	155	19

Source : Ministry of Education,
Statistical Yearbook of Education, various years.

3-2. Vocational High Schools by School Type

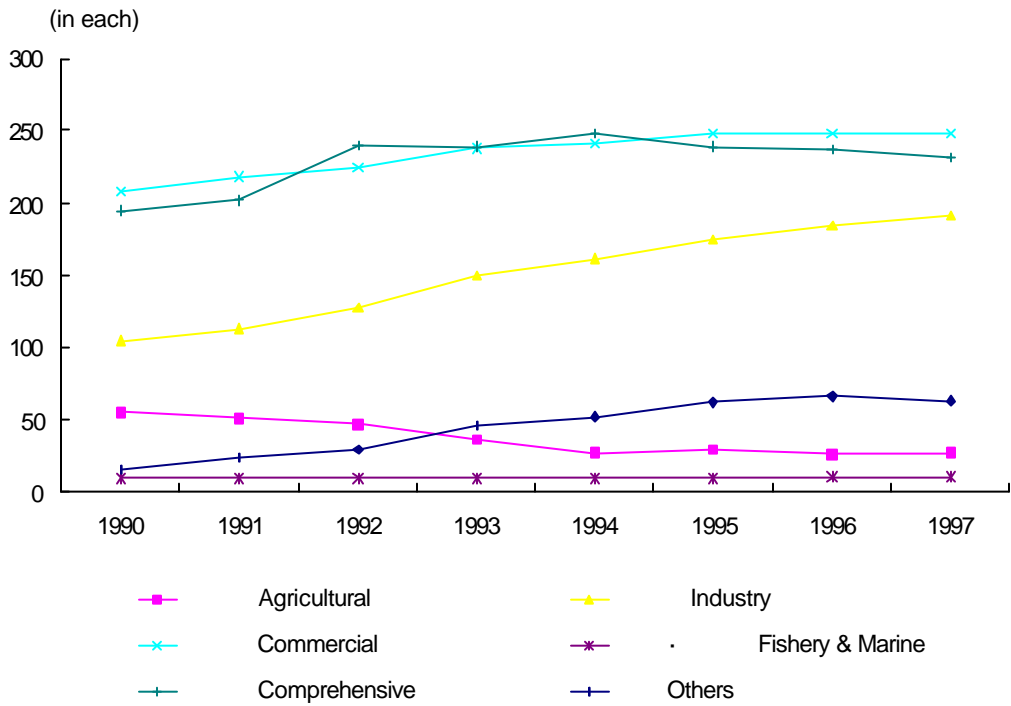
: , (%)

In each, (%)

	Total	Agricultural	Technical	Commercial	Fishery & Marine	Comprehensive	Vocational
1985	635 (100.0)	61 (9.6)	102 (16.1)	227 (35.7)	9 (1.4)	204 (32.1)	32 (5.0)
1990	593 (100.0)	61 (10.3)	104 (17.5)	208 (35.1)	9 (1.5)	195 (32.9)	16 (2.7)
1991	628 (100.0)	61 (9.7)	113 (18.0)	219 (34.9)	9 (1.4)	202 (32.2)	24 (3.8)
1992	691 (100.0)	61 (8.8)	127 (18.4)	225 (32.6)	9 (1.3)	240 (34.7)	29 (4.2)
1993	743 (100.0)	61 (8.2)	150 (20.2)	238 (32.0)	9 (1.2)	239 (32.2)	46 (6.2)
1994	772 (100.0)	61 (7.9)	161 (20.9)	241 (31.2)	9 (1.2)	248 (32.1)	52 (6.7)
1995	794 (100.0)	61 (7.7)	175 (22.0)	248 (31.2)	9 (1.1)	239 (30.1)	62 (7.8)
1996	806 (100.0)	61 (7.6)	184 (22.8)	248 (30.8)	10 (1.2)	237 (29.4)	66 (8.2)
1997	805 (100.0)	61 (7.6)	191 (23.7)	248 (30.8)	10 (1.2)	232 (28.8)	63 (7.8)

Source : Ministry of Education,
Statistical Yearbook of Education, various years.

3-2G. Vocational High Schools by School Type



3-3.

Number of Vocational Training Institutions and Trades by Institution Type

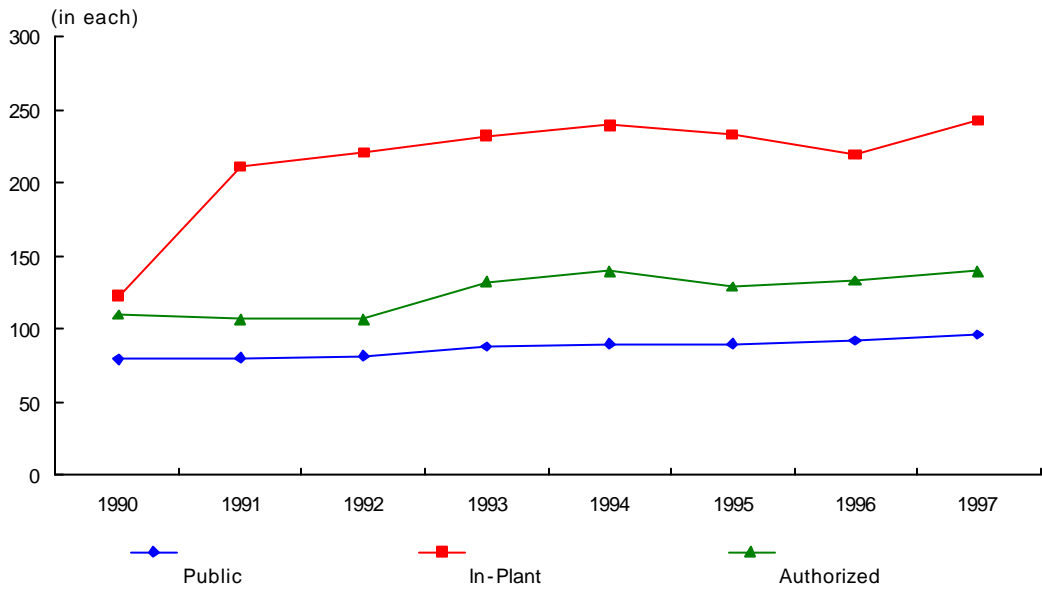
	In each, Kind							
	Total		Public		In-Plant		Authorized	
	V.T.I. ¹⁾	Trade	V.T.I.	Trade	V.T.I.	Trade	V.T.I.	Trade
1980	590	244	90	100	472	116	28	28
1985	312	177	78	57	185	85	49	35
1990	310	268	79	122	122	91	109	55
1991	397	223	80	77	211	94	106	52
1992	407	262	81	57	220	148	106	57
1993	451	287	87	112	232	115	132	60
1994	468	357	90	171	239	115	139	71
1995	450	360	89	174	233	115	128	71
1996	444	426	92	223	219	158	133	45
1997	477	377	96	198	242	124	139	55

Source : Ministry of Labour, *Yearbook of Labour Statistics*, 1998.

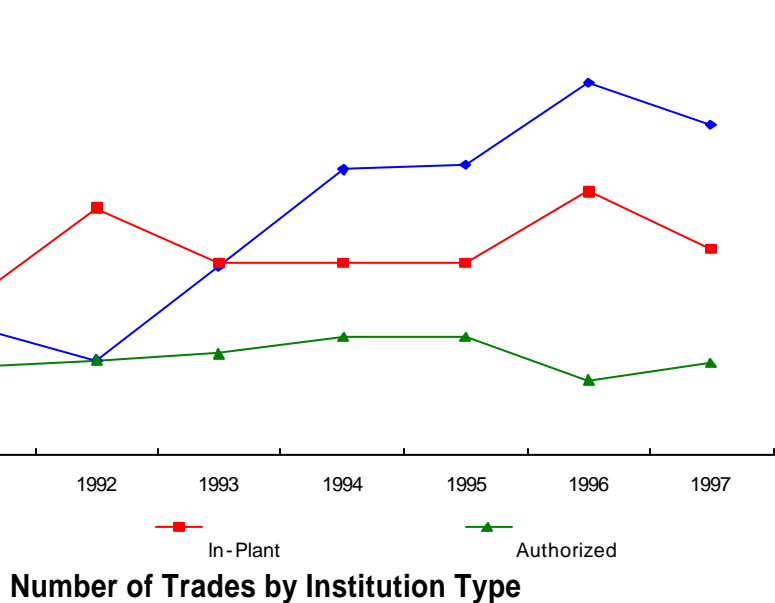
1) V.T.I. : Vocational Training Institute

3-3G1.

Number of Vocational Training Institutions by Institution Type



3-3G2.



3-4.

Public Vocational Training Institutions by Governing Agency

In establishment

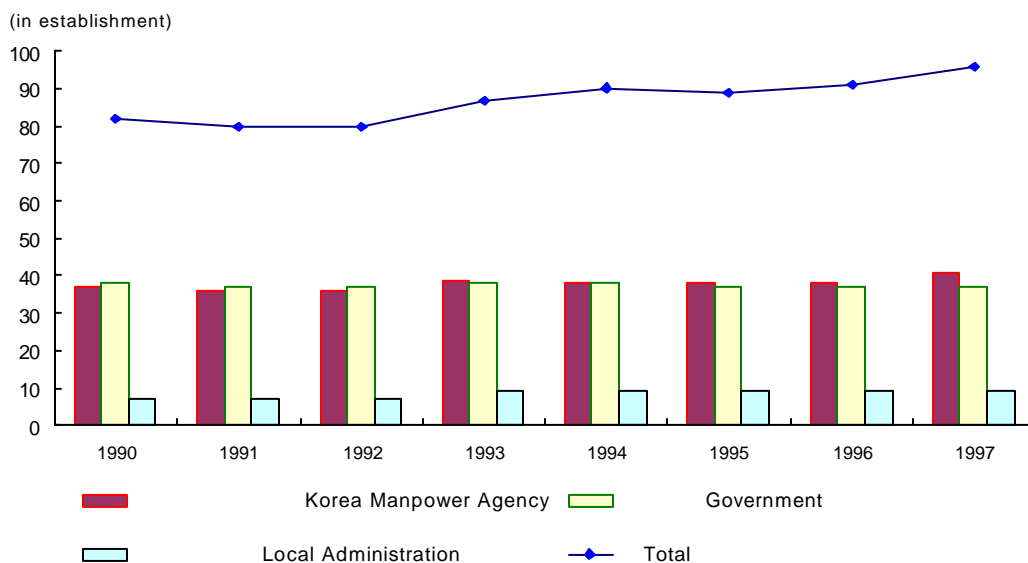
	Total	Korea Manpower Agency	Korea Chamber of Commerce & Industry	Government	Local Administration	Korea Employment Promotion Agency the Disabled
1985	78	25	—	37	16	—
1990	82	37	—	38	7	—
1991	80	36	—	37	7	—
1992	80	36	—	37	7	—
1993	87	39	—	38	9	1
1994	90	38	4	38	9	1
1995	89	38	4	37	9	1
1996	91	38	6	37	9	1
1997	96	41	8	37	9	1

Labour, Statistics, 1998.

Source : Ministry of Yearbook of Labour

3-4G.

Public Vocational Training Institutions by Governing Agency



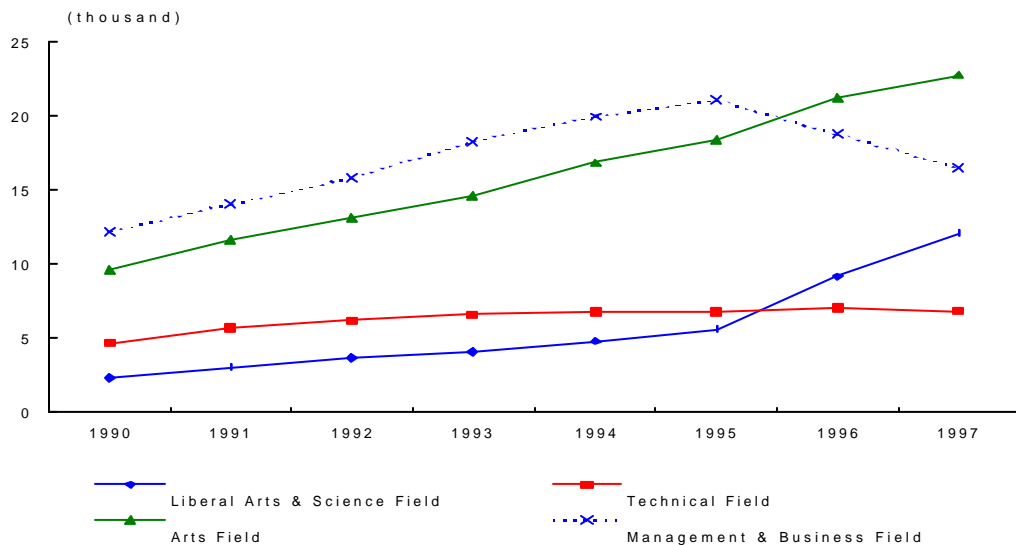
3-5. Number of Private Institutes by Field

In each

	Total	Liberal Arts & Sciences Field	Technical Field	Arts Field	Management & Business Field	Home Economics Course	Physical Course	Others
1980	5,023	381	651	1,485	1,367	162	918	59
1985	11,196	544	1,250	4,293	3,428	129	1,310	242
1990	28,862	2,359	4,629	9,615	12,179	80	-	-
1991	34,429	3,063	5,670	11,611	14,006	79	-	-
1992	38,865	3,690	6,188	13,142	15,746	99	-	-
1993	43,599	4,087	6,568	14,560	18,262	122	-	-
1994	48,476	4,784	6,770	16,839	19,936	147	-	-
1995	52,058	5,630	6,770	18,385	21,093	180	-	-
1996	56,133	9,119	7,078	21,197	18,739	-	-	-
1997	58,134	12,133	6,804	22,725	16,472	-	-	-

Source : Ministry of Education, Statistical Yearbook of Education, various years.

3-5G. Number of Private Institutes by Field



3-6.

Number of Students enrolled in Vocational Schools by Level

In person

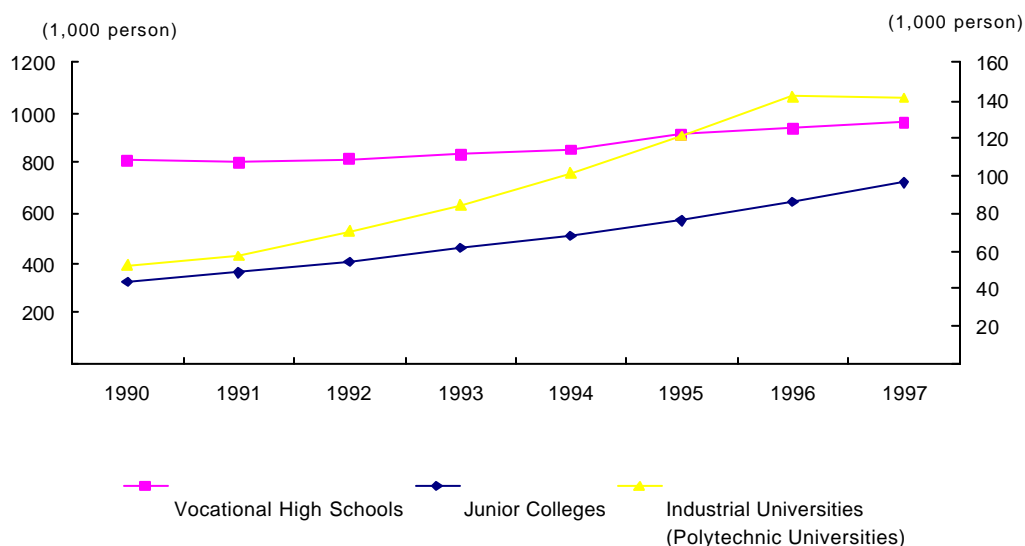
	Vocational High Schools		Junior Colleges		Industrial Universities (Polytechnic Universities)	
	Total	Female	Total	Female	Total	Female
1980	764,187	322,078	151,199	39,883	—	—
1985	885,962	437,038	242,114	87,123	24,719	2,485
1990	810,651	428,097	323,825	119,345	51,970	7,867
1991	804,021	427,714	359,049	131,414	57,381	10,259
1992	812,492	432,469	404,996	146,250	70,205	12,811
1993	832,028	441,371	456,227	165,567	83,904	15,957
1994	851,495	448,764	506,806	186,509	101,412	19,972
1995	911,453	480,697	569,820	214,310	120,670	24,464
1996	939,433	489,689	642,697	251,266	141,826	30,029
1997	960,037	494,059	724,741	277,658	141,099	30,958

Source : Ministry of Education, *Statistical Yearbook of Education*, various years.

Source : Ministry of Education,

3-6G.

Number of Students enrolled in Vocational Schools by Level



3-7. Enrollment in Vocational High Schools by Field of Study

:

In person

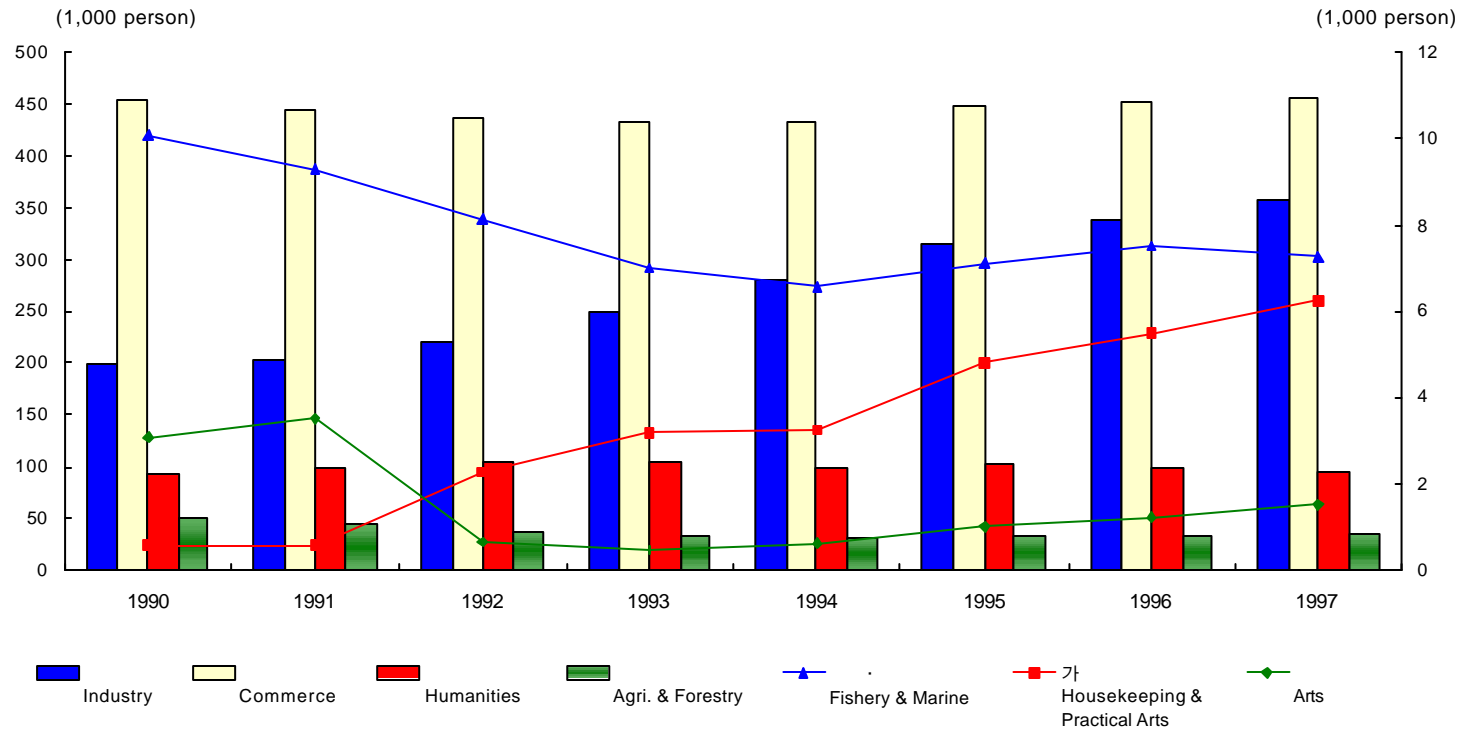
	Total	Agriculture	Industry	Commerce	Fishery & Marine	가 Housekeeping & Practical Arts	Humanities	Arts
1985	885,962	63,950	223,494	477,900	10,753	4,859	105,006	-
1990	810,651	49,586	198,394	454,806	10,095	587	94,095	3,088
1991	804,021	44,082	203,593	444,113	9,278	564	98,878	3,513
1992	812,492	37,809	221,675	437,070	8,125	2,281	104,899	633
1993	830,947	33,109	248,755	433,752	7,027	3,182	104,644	478
1994	851,495	31,084	279,885	432,722	6,589	3,271	97,312	632
1995	911,453	32,405	315,093	448,732	7,105	4,807	102,312	999
1996	939,433	33,726	338,871	453,169	7,505	5,504	99,433	1,225
1997	960,037	34,632	358,614	456,327	7,283	6,250	95,420	1,511

:

Source : Ministry of Education, *Statistical Yearbook of Education*, various years.

3-7G.

Enrollment in Vocational High Schools by Field of Study



3-8. Vocational High School Enrollment vs. General High School Enrollment

: , (%)

In person, (%)

	Total	Academic High School		Vocational High School						(A)/(B)
		(A)	Total(B)	Agri.	Tech.	Commer.	Fish. & Mar.	Compr.	Voc.	
1980	1,691,109	932,605 (55.1)	758,504 (44.9)	53,678 (7.1)	200,367 (26.4)	323,816 (42.7)	7,096 (0.9)	21,121 (16.0)	52,426 (6.9)	1.23
1985	2,288,406	1,266,840 (55.4)	1,021,566 (44.6)	63,950 (6.3)	223,494 (21.9)	477,900 (46.8)	10,753 (1.1)	203,659 (19.9)	41,810 (4.1)	1.24
1990	2,383,836	1,473,155 (61.8)	910,681 (38.2)	49,586 (5.4)	198,394 (21.8)	454,806 (49.9)	10,095 (1.1)	181,094 (19.9)	16,706 (1.8)	1.62
1991	2,308,187	1,406,891 (61.0)	901,296 (39.0)	44,082 (4.9)	203,593 (22.6)	444,113 (49.3)	9,278 (1.0)	179,748 (19.9)	20,482 (2.3)	1.56
1992	2,231,235	1,313,081 (58.8)	918,154 (41.2)	37,809 (4.1)	221,675 (24.1)	437,070 (47.6)	8,125 (0.9)	186,451 (20.3)	27,024 (2.9)	1.43
1993	2,186,140	1,237,182 (56.6)	948,958 (43.4)	33,109 (3.5)	249,499 (26.3)	433,830 (45.7)	7,027 (0.7)	183,968 (19.4)	41,525 (4.4)	1.30
1994	2,194,214	1,209,330 (55.1)	984,884 (44.9)	31,084 (3.2)	279,885 (28.4)	432,722 (43.9)	6,589 (0.7)	185,706 (18.9)	48,898 (5.0)	1.23
1995	2,303,899	1,246,427 (54.1)	1,057,472 (45.9)	32,405 (3.1)	315,093 (29.8)	448,732 (42.4)	7,105 (0.7)	188,484 (17.8)	65,653 (6.2)	1.18
1996	2,390,494	1,303,874 (54.5)	1,086,620 (45.5)	33,726 (3.1)	338,871 (31.2)	453,169 (41.7)	7,505 (0.7)	184,693 (17.0)	68,656 (6.3)	1.20
1997	2,480,738	1,376,688 (55.5)	1,104,050 (44.5)	34,632 (3.1)	358,614 (32.5)	456,327 (41.3)	7,283 (0.7)	177,933 (16.1)	69,261 (6.3)	1.25

Source : Ministry of Education, *Statistical Yearbook of Education*, various years.

3-9. Junior College Enrollment by Field of Study

:

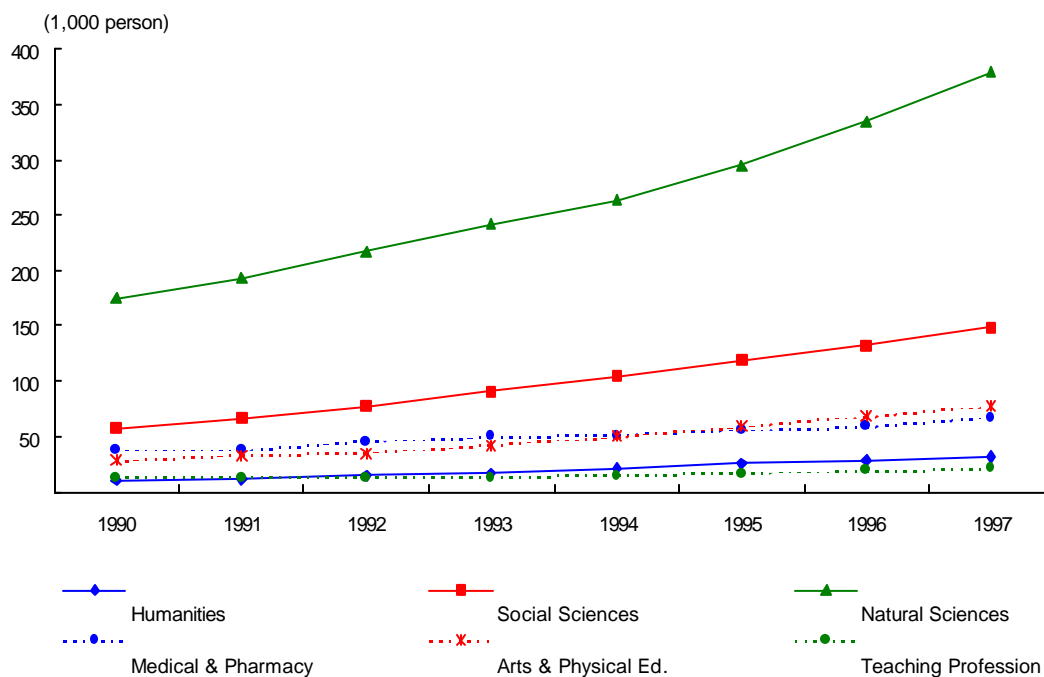
In person

	Total	Humanities	Social Sciences	Natural Sciences	Medical & Pharmacy	Arts & Physical Ed.	Teaching Profession
1980	151,199	—	15,764	116,480	12,244	6,711	—
1985	242,114	4,799	44,164	128,033	31,974	18,706	14,438
1990	323,825	10,419	58,441	174,815	37,532	28,759	13,859
1991	359,049	12,105	67,224	193,785	38,736	33,073	14,126
1992	404,996	14,638	77,730	217,454	45,565	35,359	14,250
1993	456,227	17,198	90,994	241,528	49,783	42,498	14,226
1994	506,806	20,705	104,956	263,748	51,905	50,269	15,223
1995	569,820	25,114	118,505	294,477	56,142	58,641	16,941
1996	642,697	28,330	132,262	334,061	59,868	68,790	19,386
1997	724,741	31,853	148,351	378,657	66,942	77,822	21,116

:

Source : Ministry of Education,
Statistical Yearbook of Education, various years.

3-9G. Junior College Enrollment by Field of Study



3-10.

Numbers of Vocational Trainees by Type of Training Institutions

In person

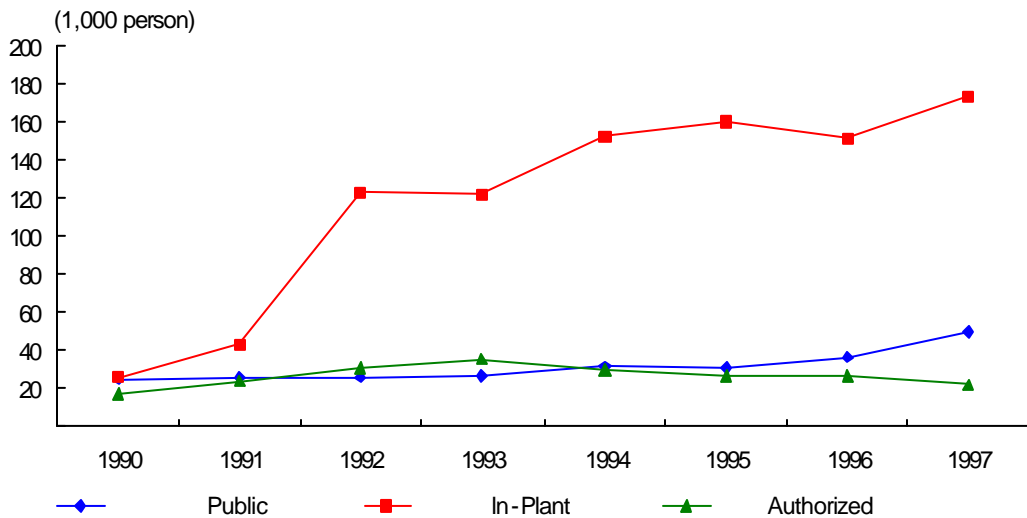
	Total	Public					In-Plant	Authorized
		Total	KMA	Government	Local Administration	Others		
1980	104,480	31,131	15,007	8,330	7,191	603	66,213	7,136
1985	55,385	22,583	12,957	6,787	2,521	318	23,876	8,926
1990	67,702	24,441	17,343	4,254	2,844	-	25,690	17,571
1991	93,503	25,950	18,465	4,433	3,052	-	43,304	24,249
1992	178,864	26,131	18,116	5,082	2,933	-	122,457	30,276
1993	184,034	26,206	18,407	4,991	2,615	193	122,151	35,677
1994	213,005	31,671	22,704	4,815	2,104	2,048	152,030	29,304
1995	217,660	30,508	21,220	4,825	2,248	2,215	160,413	26,739
1996	214,259	36,644	25,615	4,570	3,008	3,451	151,303	26,312
1997	245,044	49,257	36,970	4,355	2,287	-	173,686	22,101

Source : Ministry of Labour, *Yearbook of Labour statistics*, various years.

1) Others : Korea Employment Promotion agency for the Disabled

3-10G.

Numbers of Vocational Trainees by Type of Training Institutions



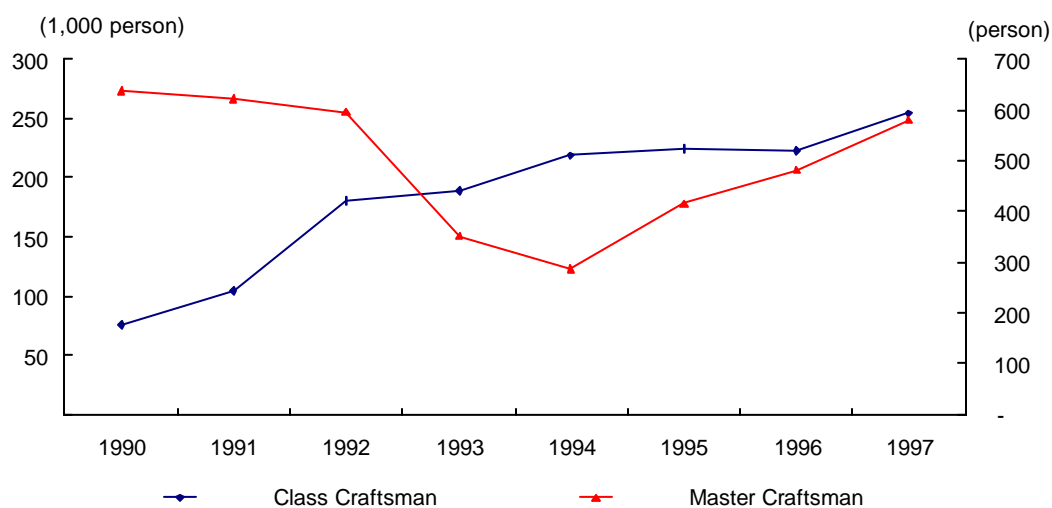
3-11. Number of Vocational Trainees by Skill Level

In person

	Total	Class Craftsman	Technician	Master Craftsman	Training Instructor	Supervisor & Manager
1980	105,696	104,480	–	–	1,216	–
1985	56,714	55,385	243	127	959	–
1990	75,463	67,702	–	637	225	6,899
1991	104,558	93,503	–	622	194	10,239
1992	180,018	178,864	–	594	560	–
1993	188,408	184,034	–	352	4,022	–
1994	218,239	213,005	961	286	3,987	–
1995	223,935	217,660	3,004	417	2,854	–
1996	222,094	214,259	4,733	480	2,622	–
1997	253,558	245,044	5,843	579	2,092	–

Source : Ministry of Labour,
Yearbook of Labour Statistics, various years.

3-11G. Number of Vocational Trainees by Skill Level



3-12. Attendants of Private Institutes by Field

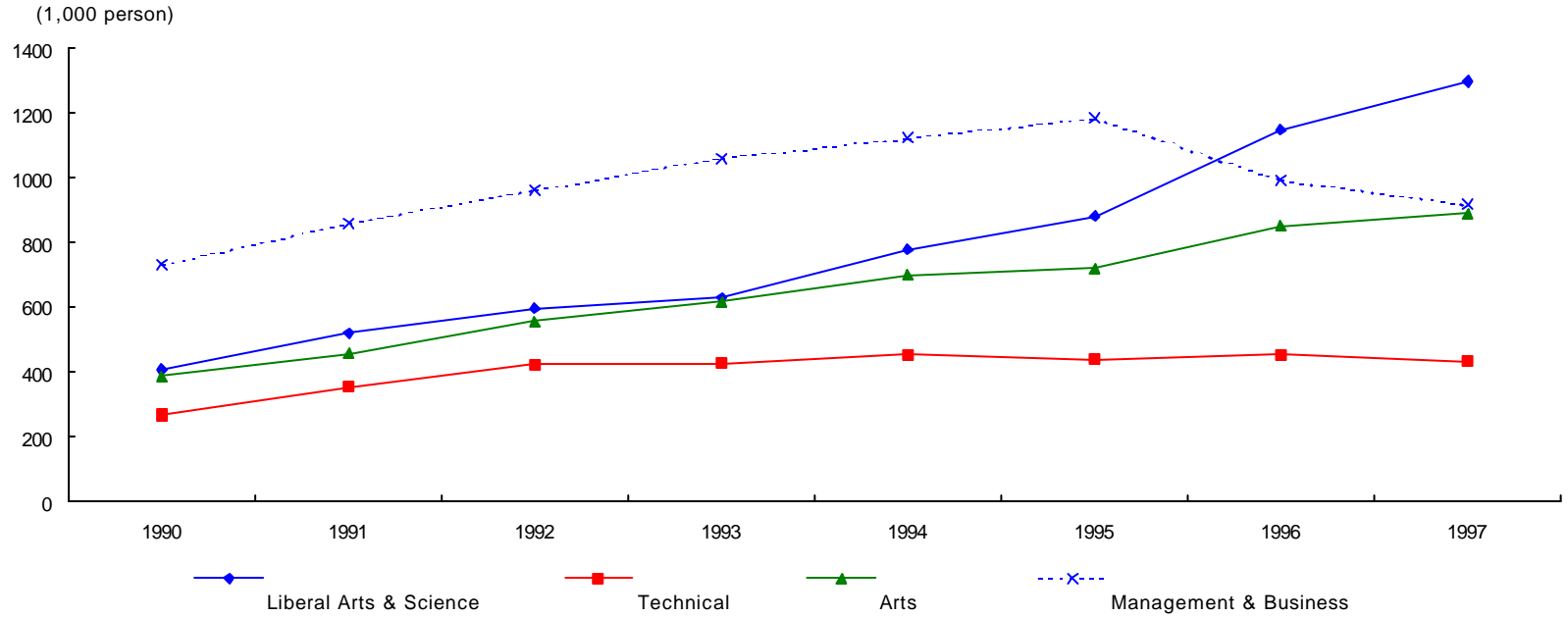
In person

	1) Total		Liberal Arts & Science		Technical		Arts		Management & Business	
	Total	Female	Total	Female	Total	Female	Total	Female	Total	Female
1980	411,162	183,748	117,618	35,905	52,030	12,076	52,808	35,261	123,922	87,147
1985	654,039	292,967	126,456	37,568	72,503	21,056	129,752	86,166	232,352	129,353
1990	1,793,583	856,457	408,205	145,616	267,289	94,847	383,569	241,286	731,138	372,277
1991	2,193,947	1,048,391	519,237	193,999	357,474	134,234	455,831	287,590	857,007	429,376
1992	2,541,065	1,229,147	596,607	227,614	422,751	164,952	553,674	346,294	961,899	485,560
1993	2,733,899	1,339,868	626,192	246,402	427,509	178,515	616,556	387,708	1,058,119	522,847
1994	3,065,918	1,497,382	778,378	312,150	454,766	199,251	701,474	434,870	1,124,540	545,770
1995	3,230,275	1,606,536	879,993	375,574	435,869	193,465	721,381	457,183	1,185,096	573,887
1996	3,438,802	1,729,678	1,146,704	509,432	452,391	219,436	848,656	519,935	991,051	480,875
1997	3,537,673	1,783,962	1,298,773	592,055	432,518	210,087	892,498	539,162	913,884	442,658

Source : Ministry of Education, *Statistical Yearbook of Education*, various years.

1) The Total number of attendants includes attendants also in the field of home economics, physical education, and in other fields.

3-12G. Attendants of Private Institutes by Field



3-13.

Discontinuation of Study among Vocational High School Students by Reason

: , %

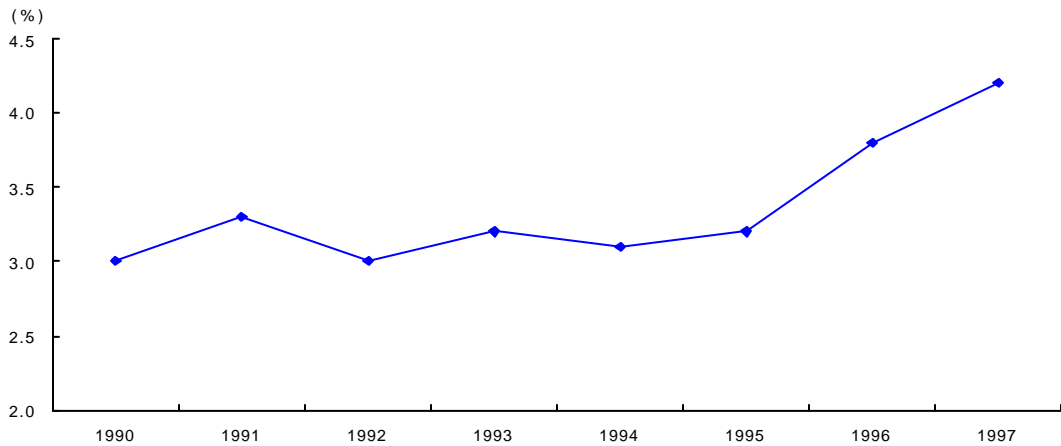
In person, %

	Removals from A Register, Drop-outs, and Absentees for A Semester Or More						Discontinuation Rate
	Total	Death	Disease	가 Domestic Affairs	Behavior	Others	
1980	16,266	-	2,135	9,390	-	5,150	2.1
1985	36,403	-	2,401	22,998	-	11,004	4.1
1990	24,641	-	940	15,313	-	8,388	3.0
1991	26,216	-	991	15,391	-	9,834	3.3
1992	24,517	-	1,024	13,445	-	10,048	3.0
1993	26,899	-	1,159	14,476	-	11,264	3.2
1994	26,651	-	1,057	13,640	-	11,954	3.1
1995	29,045	-	1,179	13,886	-	13,980	3.2
1996	36,133	504	1,142	15,589	8,764	10,134	3.8
1997	40,066	567	1,088	16,640	12,635	9,136	4.2

Source : Ministry of Education,
Statistics Yearbook of Education, various years.

3-13G.

Discontinuation of Study among Vocational High School Students by Reason



3-14.

Annual Mobility of Junior College Students (by Reason)

In person

	Total		Absentees for a semester or more		Reinstated to school		Removed from the register		Returned to original register		Transferred in		Transferred out	
	Total	Female	Total	Female	Total	Female	Total	Female	Total	Female	Total	Female	Total	Female
1980	15,968	1,717	8,863	233	1,403	77	4,754	872	85	12	753	488	105	35
1985	48,054	6,122	19,500	1,330	10,652	578	16,623	3,962	491	62	710	185	78	5
1990	74,500	4,126	44,571	1,476	22,020	927	7,430	1,623	300	22	177	76	2	2
1991	83,805	4,844	49,709	1,593	26,009	1,022	7,224	1,863	355	31	507	334	1	1
1992	97,050	5,111	58,393	1,819	29,818	1,137	8,320	1,999	260	24	258	132	1	—
1993	106,903	5,852	64,016	2,423	33,817	1,242	8,393	2,034	150	11	526	141	1	1
1994	124,511	8,635	72,659	3,069	38,945	1,564	9,444	2,448	616	80	382	91	2,465	1,383
1995	136,660	10,868	75,807	3,640	44,412	1,905	14,675	4,371	512	76	114	29	1,140	847
1996	162,102	14,973	90,711	4,949	50,222	2,372	19,066	6,555	598	136	525	234	980	727
1997	181,746	20,180	109,361	7,087	48,097	3,622	20,688	7,763	678	186	1,577	473	1,345	1,049

Source : Ministry of Education, *Statistical Yearbook of Education*, various years.

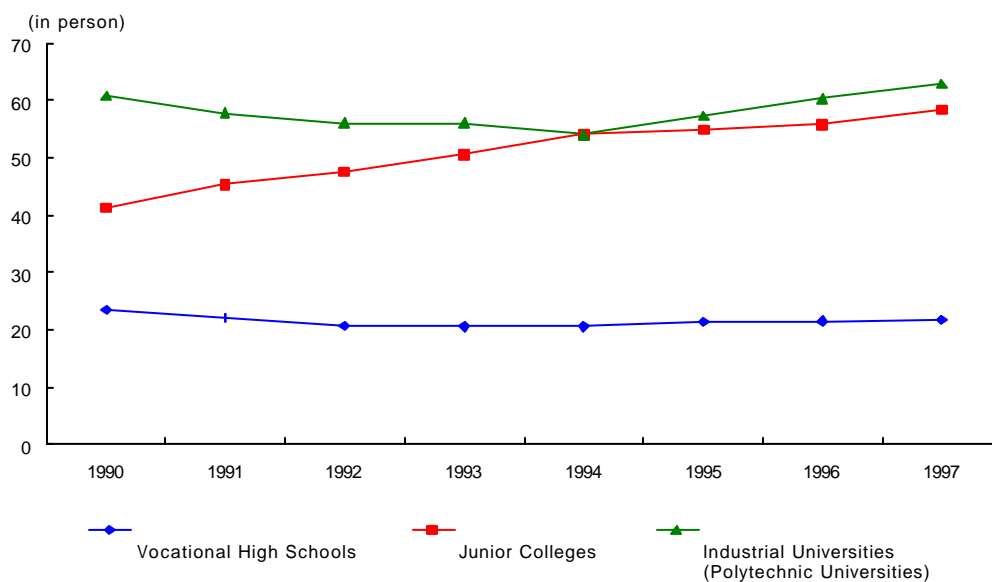
3-15. 1 Number of Students per Teacher by Vocational School Level

: In person

	Vocational High Schools		Junior Colleges		Industrial Universities (Polytechnic Universities)	
	Teachers	Students per Teacher	Teachers	Students per Teacher	Teachers	Students per Teacher
1980	23,468	32.6	5,488	30.1	—	—
1985	29,506	30.0	6,406	37.8	—	—
1990	34,609	23.4	7,832	41.3	855	60.8
1991	36,515	22.0	7,953	45.1	993	57.8
1992	38,984	20.8	8,518	47.5	1,252	56.1
1993	40,658	20.5	9,024	50.6	1,497	56.0
1994	41,311	20.6	9,375	54.1	1,873	54.1
1995	42,656	21.4	10,384	54.9	2,106	57.3
1996	43,788	21.5	11,515	55.8	2,355	60.2
1997	44,294	21.7	12,468	58.1	2,248	62.8

Source : Ministry of Education,
Statistical Yearbook of Education, various years.

3-15G. 1 Number of Students per Teacher by Vocational School Level



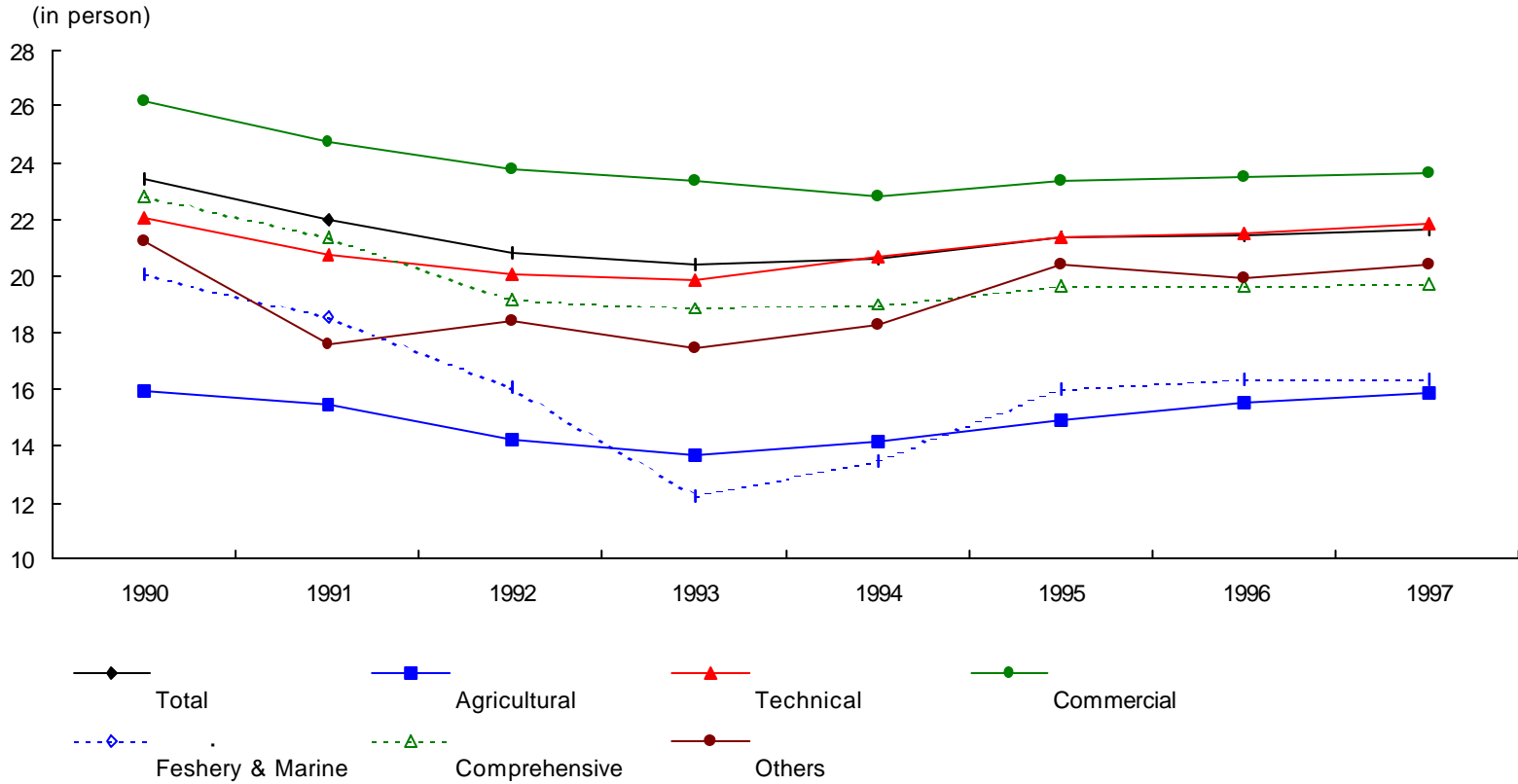
3-16. 1
Number of Students per Teacher in Vocational High Schools by School Type

In person

	In person													
	Total		Agricultural		Technical		Commercial		Fishery & Marine		Comprehensive		Vocational	
	Teachers	per Student	Teachers	per Student	Teachers	per Student	Teachers	per Student	Teachers	per Student	Teachers	per Student	Teachers	per Student
1980	23,293	1,930	27.8	6,782	29.5	9,167	35.3	257	27.6	3,789	32.0	1,368	38.3	
1985	29,506	2,335	27.4	7,382	30.3	11,675	40.9	397	27.1	6,669	30.5	1,048	39.9	
1990	34,609	2,552	19.4	8,701	22.8	14,167	32.1	465	21.7	7,937	22.8	787	21.2	
1991	36,515	2,399	18.4	9,280	21.9	14,789	30.0	463	20.0	8,417	21.4	1,167	17.6	
1992	38,984	2,239	16.9	10,015	22.1	15,098	28.9	465	17.5	9,697	19.2	1,470	18.4	
1993	40,658	1,715	19.3	11,411	21.9	15,012	28.9	401	17.5	9,739	18.9	2,380	17.4	
1994	41,311	1,374	22.6	11,999	23.3	15,072	28.7	416	15.8	9,769	19.0	2,681	18.2	
1995	42,656	1,432	22.6	12,804	24.6	15,206	29.5	425	16.7	9,578	19.7	3,211	20.4	
1996	43,788	1,325	25.5	13,845	24.5	15,334	29.6	467	16.1	9,382	19.7	3,435	20.0	
1997	44,294	1,400	24.7	14,565	24.6	15,461	29.5	456	16.0	9,023	19.7	3,389	20.4	

Source : Ministry of Education, *Statistical Yearbook of Education*, various years.

3-16G. 1
Number of Students per Teacher in Vocational High Schools by School Type



3-17.

1)

Provision Rates of Teachers by Vocational School Level

: %

%

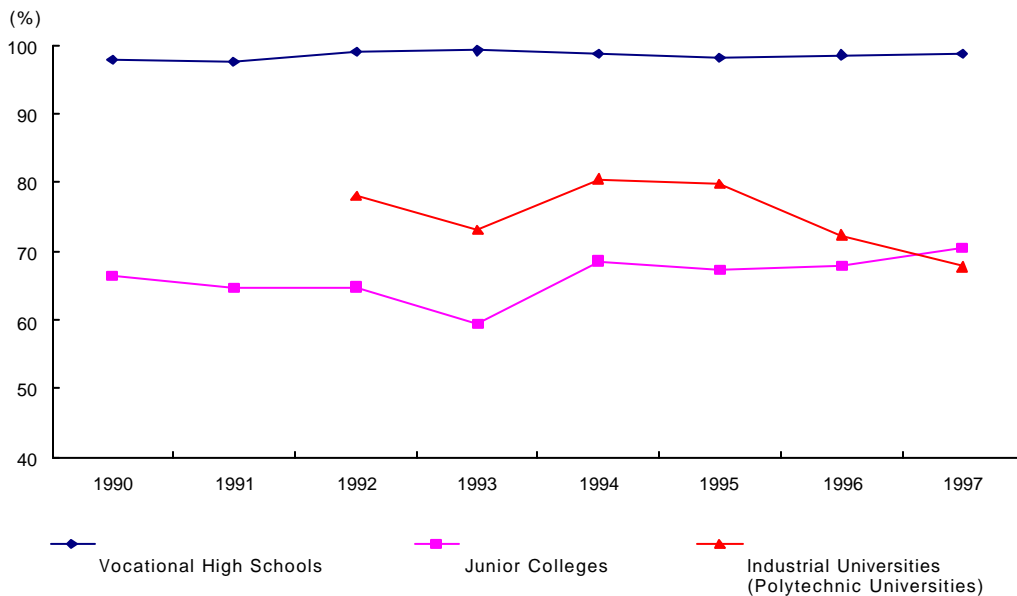
	Vocational High Schools	Junior Colleges	Industrial Universities (Polytechnic Universities)
1980	96.5	79.1	—
1985	97.0	71.2	—
1990	97.9	66.5	—
1991	97.4	64.6	—
1992	99.0	64.7	77.9
1993	99.1	59.2	73.1
1994	98.7	68.5	80.4
1995	98.2	67.3	79.8
1996	98.5	67.9	72.3
1997	98.8	70.5	67.6

Source : Ministry of Education,
Statistical Yearbook of Education, various years.

1)
$$\text{Provision rate of teacher} = \left(\frac{\text{Actual Number of Teachers}}{\text{Number of Teachers Set by the Law}} \right) * 100$$

3-17G.

Provision Rates of Teachers by Vocational School Level



3-18. Separation Rates of Teachers by Vocational School level

1)

: %

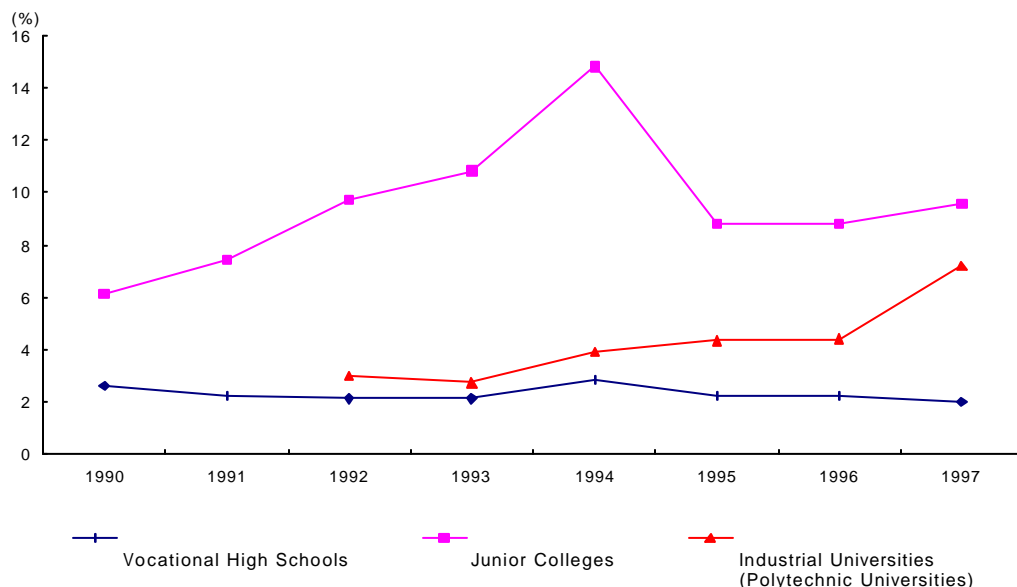
%

	Vocational High Schools	Junior Colleges	Industrial Universities (Polytechnic Universities)
1980	8.4	4.5	-
1985	4.5	5.6	-
1990	2.6	6.1	-
1991	2.2	7.4	-
1992	2.1	9.7	3.0
1993	2.1	10.8	2.7
1994	2.8	14.8	3.9
1995	2.2	8.8	4.3
1996	2.2	8.8	4.4
1997	2.0	9.5	7.2

Source : Ministry of Education,
Statistical Yearbook of Education, various years.

1) Separation rate of teachers = (No. of teachers leaving school per year / Total teachers) * 100

3-18G. Separation Rates of Teachers by Vocational School level



3-19.

1

Number of Students & Teachers per Clerical Staff by Vocational School Level

In person

	Vocational High Schools		Junior Colleges		Industrial Universities (Polytechnic Universities)	
	1 Students per Clerical Staff	1 Teachers per Clerical Staff	1 Students per Clerical Staff	1 Teachers per Clerical Staff	1 Students per Clerical Staff	1 Teachers per Clerical Staff
1980	130.8	4.0	47.4	1.6	-	-
1985	151.4	5.0	59.9	1.6	-	-
1990	141.5	6.0	76.9	1.9	73.4	1.2
1991	138.3	6.3	86.0	1.9	87.6	1.5
1992	133.2	6.4	94.4	2.0	100.6	1.8
1993	131.5	6.4	107.2	2.1	85.6	1.5
1994	129.9	6.3	112.2	2.1	92.7	1.7
1995	132.9	6.2	117.1	2.1	110.1	1.9
1996	133.7	6.2	121.8	2.2	117.4	1.9
1997	133.5	6.2	130.6	2.2	125.1	2.0

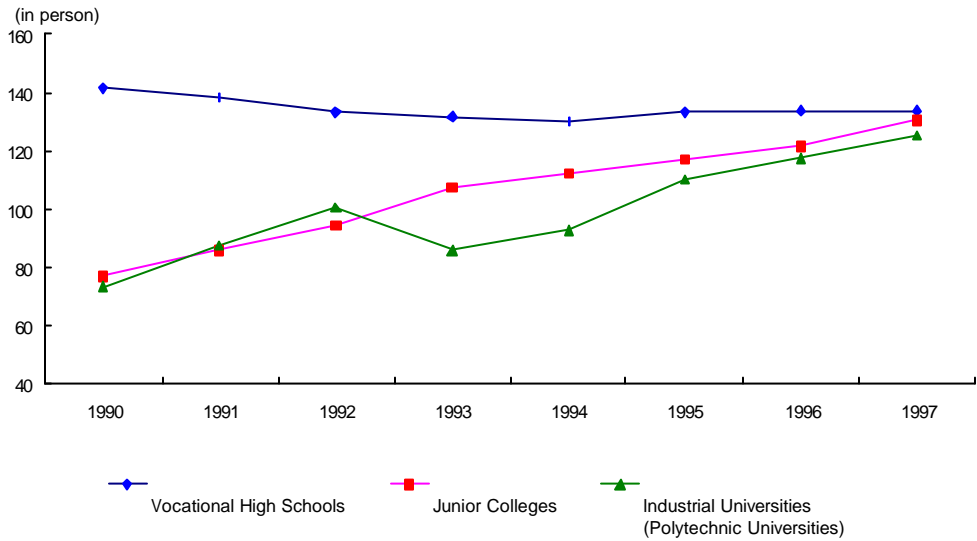
: , , 1998.

Source : Ministry of Education, *Handbook of Educational Statistics*, 1998.

3-19G1.

1

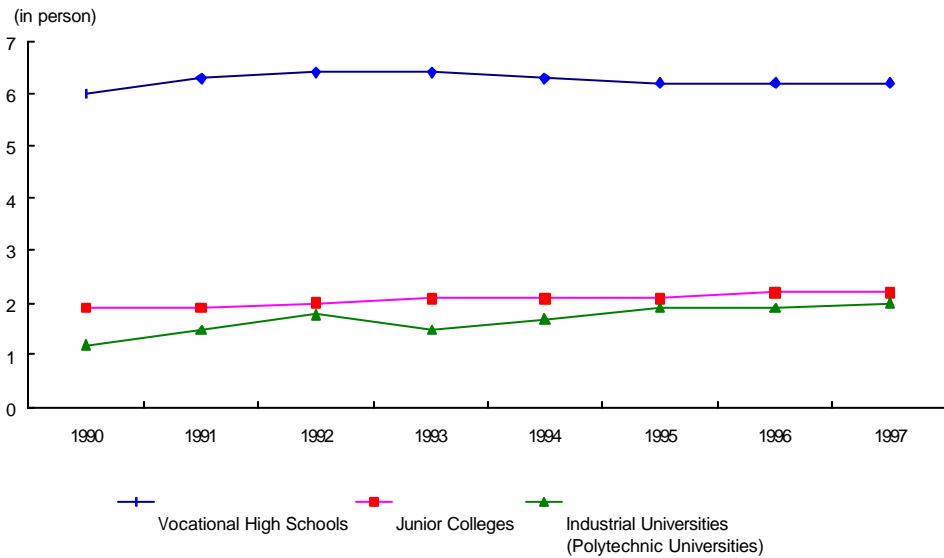
Number of Students per Clerical Staff by Vocational School Level



3-19G2.

1

Number of Teachers per Clerical Staff by Vocational School Level



3-20.

Number of Instructors in Private Institutes by Field

In person

	1)									
	Total		Liberal Arts & Sciences		Technical		Arts		Management & Business	
	Total	Female	Total	Female	Total	Female	Total	Female	Total	Female
1980	13,332	3,583	3,051	268	3,098	217	2,646	1,921	2,675	697
1985	22,559	9,266	4,470	582	4,230	641	6,040	4,898	5,407	2,535
1990	55,409	32,781	13,200	3,834	8,747	4,438	14,355	11,625	18,956	12,757
1991	65,356	40,449	14,475	4,459	10,906	5,683	18,158	15,028	21,655	15,143
1992	73,385	46,156	16,011	5,284	11,848	6,209	20,060	16,529	25,252	17,946
1993	80,556	50,827	17,936	6,482	12,994	6,924	22,135	17,396	27,236	19,806
1994	90,720	58,345	20,240	7,767	13,839	7,035	24,941	20,305	31,393	22,959
1995	96,591	63,668	23,613	10,374	13,374	7,170	26,513	21,723	32,760	24,104
1996	118,502	78,896	37,338	19,268	14,870	8,091	33,944	27,675	32,350	23,862
1997	127,551	81,636	46,319	23,759	14,066	7,633	38,158	29,200	29,008	21,044

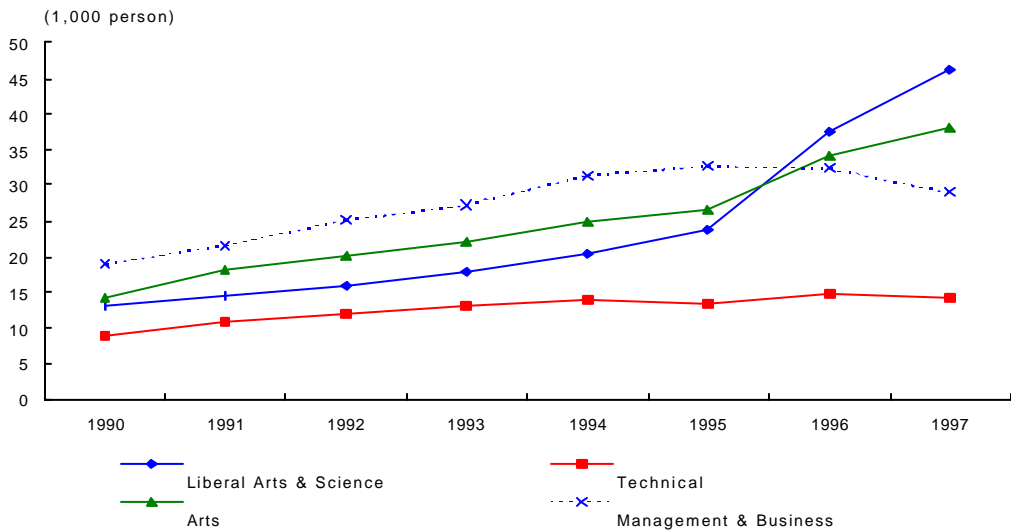
Source : Ministry of Education, *Statistical Yearbook of Education*, various years.

Source : Ministry of Education,

1) The total number of instructors includes instructors also in home economics, physical education, and other fields.

3-20G.

Number of Instructors in Private Institutes by Field



3-21.

Vocational High School Teachers by Educational Background

:

In person

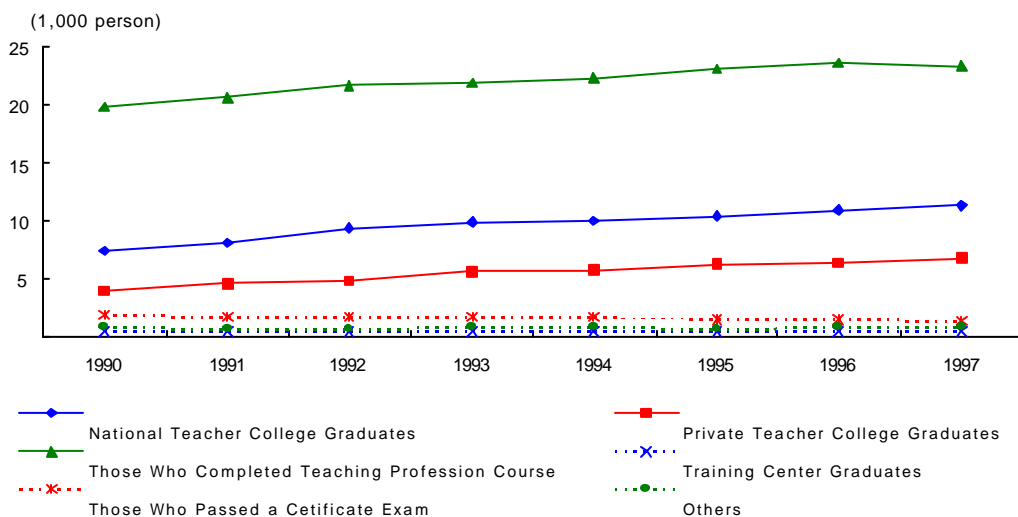
	Total	National Teacher College Graduates	Private Teacher College Graduates	Those Who Completed Teaching Profession Course	Training Center Graduates	Those Who Passed a Certificate Exam.	Others
1980	23,495	2,359	1,596	13,387	883	2,540	2,730
1985	30,713	3,847	2,755	18,916	512	2,090	2,593
1990	34,606	7,436	4,038	19,844	483	1,955	850
1991	36,515	8,146	4,621	20,654	485	1,833	776
1992	38,984	9,365	4,941	21,595	493	1,810	780
1993	40,658	9,951	5,641	21,856	538	1,821	851
1994	41,311	10,082	5,792	22,324	469	1,801	843
1995	42,656	10,484	6,266	23,035	502	1,534	835
1996	43,788	10,896	6,402	23,572	486	1,483	949
1997	44,294	11,311	6,839	23,332	457	1,437	918

:

Source : Ministry of Education,
Statistical Yearbook of Education, various years.

3-21G.

Vocational High School Teachers by Educational Background



3-22.

Vocational High School Teachers and Their Placement in the Licenced Subject

: , %

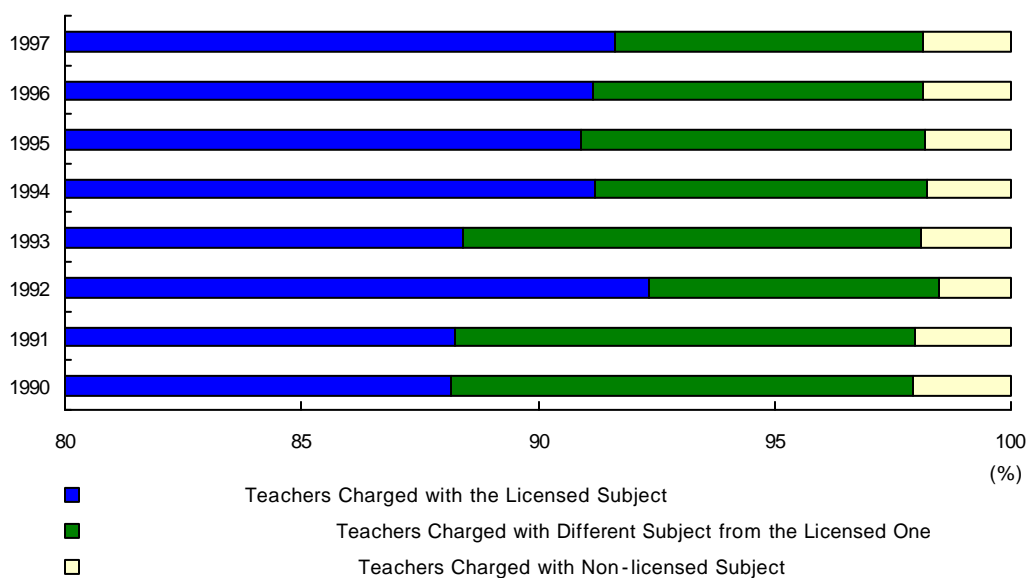
In person, %

	Total	Teachers Charged with the Licenced Subject		Teachers Charged with the Licenced Subject and Other Subject		Teachers Charged with Different Subject from the Licenced One	
		Number	Proportion	Number	Proportion	Number	Proportion
1980	10,344	8,583	83.0	1,504	14.5	257	2.5
1985	12,464	10,693	85.8	1,592	12.8	179	1.4
1990	15,401	13,578	88.2	1,506	9.8	317	2.1
1991	86,161	76,042	88.3	8,400	9.7	1,719	2.0
1992	37,295	34,451	92.4	2,278	6.1	566	1.5
1993	90,422	79,930	88.4	8,766	9.7	1,726	1.9
1994	39,476	36,013	91.2	2,774	7.0	689	1.7
1995	40,759	37,054	90.9	2,980	7.3	725	1.8
1996	41,870	38,178	91.2	2,912	7.0	780	1.9
1997	42,350	38,800	91.6	2,761	6.5	789	1.9

Source : Ministry of Education,
Statistical Yearbook of Education, various years.

3-22G.

Vocational High School Teachers and Their Placement in the Licenced Subject



3-23.

Type of Degrees Held by Faculty Members in Junior Colleges

: , (%)

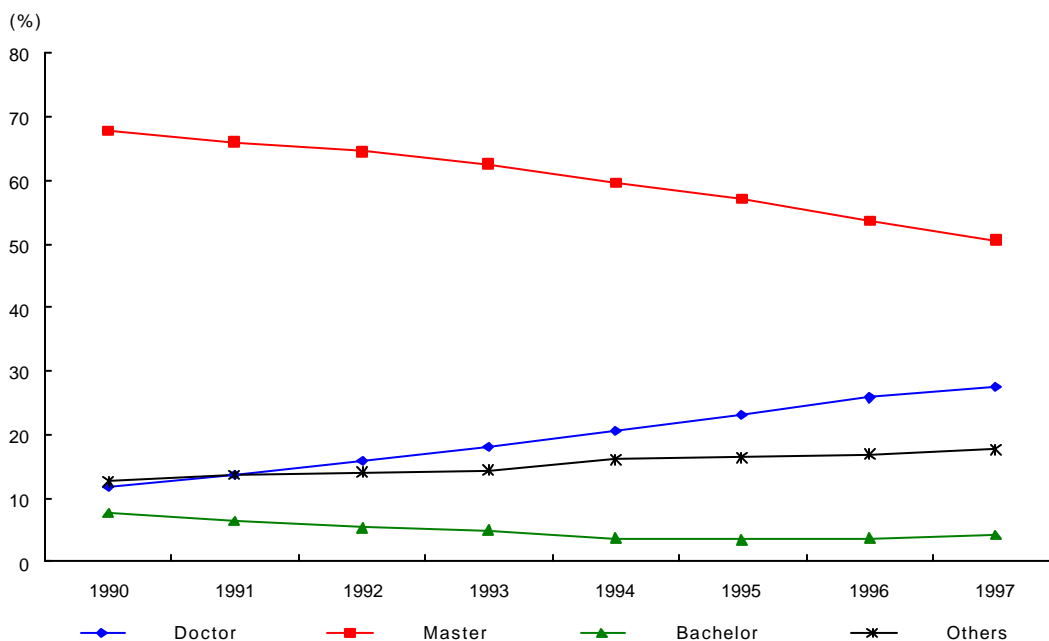
In person, (%)

	Total	Doctor	Master	Bachelor	Others
1980	5,488	77 (1.4)	2,738 (49.9)	1,998 (36.4)	675 (12.3)
1985	6,406	201 (3.1)	4,430 (69.2)	802 (12.5)	973 (15.2)
1990	7,382	872 (11.8)	5,003 (67.8)	572 (7.7)	935 (12.7)
1991	7,953	1,085 (13.6)	5,254 (66.1)	520 (6.5)	1,094 (13.8)
1992	8,518	1,355 (15.9)	5,501 (64.6)	455 (5.3)	1,207 (14.2)
1993	9,024	1,635 (18.1)	5,652 (62.6)	447 (5.0)	1,290 (14.3)
1994	9,375	1,924 (20.5)	5,593 (59.7)	345 (3.7)	1,513 (16.1)
1995	10,384	2,388 (23.0)	5,925 (57.1)	374 (3.6)	1,697 (16.3)
1996	11,515	2,966 (25.8)	6,182 (53.7)	425 (3.7)	1,942 (16.9)
1997	12,468	3,424 (27.5)	6,323 (50.7)	536 (4.3)	2,185 (17.5)

Source : Ministry of Education,
Statistical Yearbook of Education, various years.

3-23G.

Type of Degrees Held by Faculty Members in Junior Colleges (% distribution)



3-24.

Type of Degrees Held by Faculty Members in Industrial Universities (Polytechnic Universities)

: , (%)

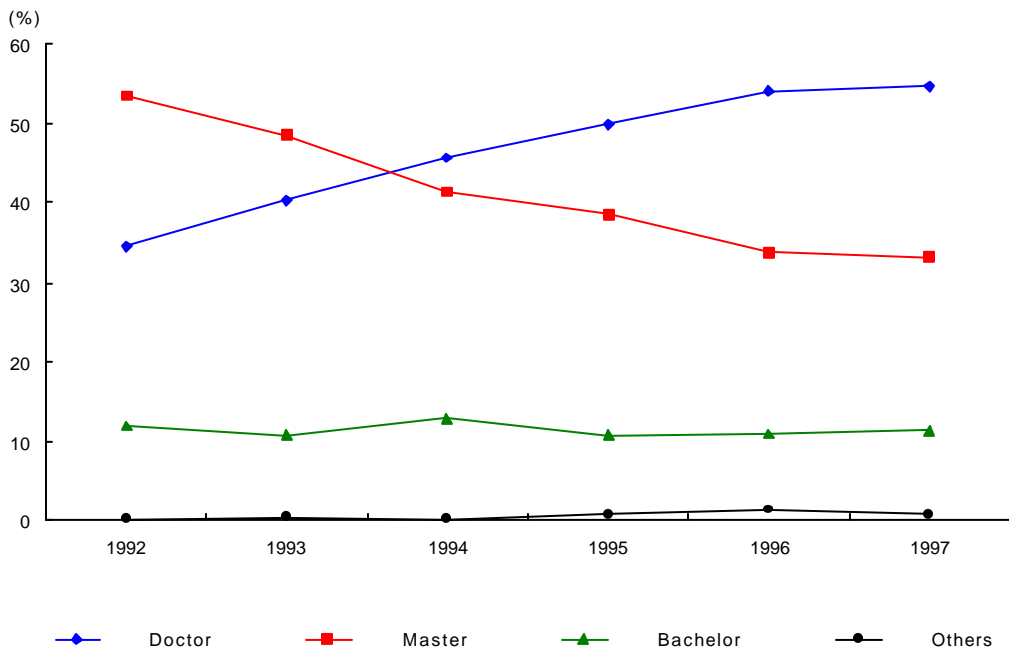
In person, (%)

	Total	Doctor	Master	Bachelor	Others
1992	1,252	432 (34.5)	670 (53.5)	148 (11.8)	2 (0.2)
1993	1,497	603 (40.3)	725 (48.4)	162 (10.8)	7 (0.5)
1994	1,873	855 (45.6)	776 (41.4)	240 (12.8)	2 (0.1)
1995	2,106	1,050 (59.9)	812 (38.6)	227 (10.8)	17 (0.8)
1996	2,355	1,273 (54.1)	796 (33.8)	256 (10.9)	30 (1.3)
1997	2,248	1,227 (54.6)	746 (33.2)	256 (11.4)	19 (0.8)

Source : Ministry of Education,
Statistical Yearbook of Education, various years.

3-24G.

Type of Degrees Held by Faculty Members in Industrial Universities (Polytechnic Universities)(% distribution)



3-25.

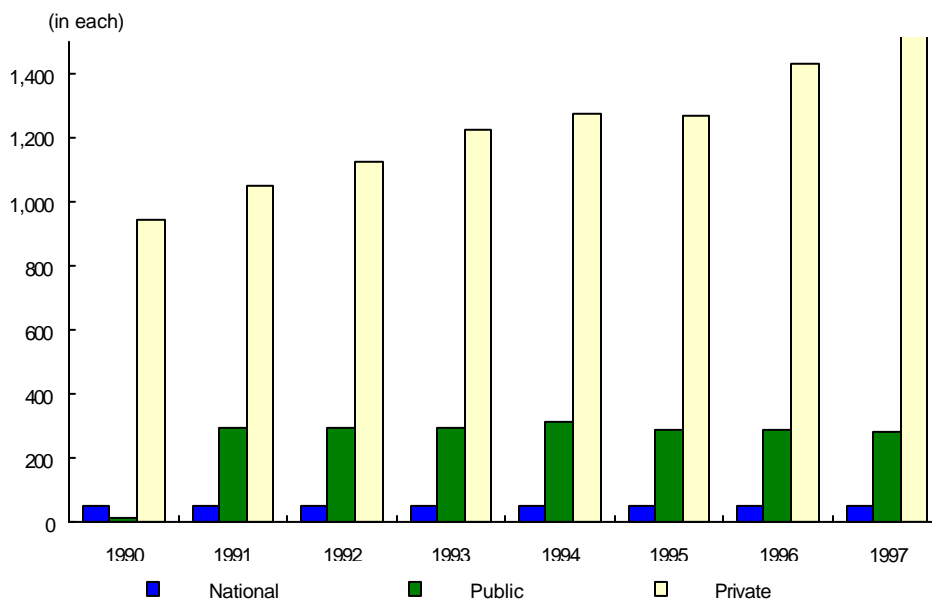
Number of Employment Security Offices

	In each			
	Total	National	Public	Private
1980	338	36	7	295
1985	319	42	7	270
1990	1,016	53	16	947
1991	1,392	51	291	1,050
1992	1,468	52	296	1,120
1993	1,575	52	298	1,225
1994	1,638	52	312	1,274
1995	1,610	52	287	1,271
1996	1,771	52	287	1,432
1997	2,046	53	283	1,710

Source : Ministry of Labour,
Yearbook of Labour Statistics, various years.

3-25G.

Number of Employment Security Offices



3-26.

Job Placement by Type of Employment Security Offices (in Number & %)

: , %

In person, %

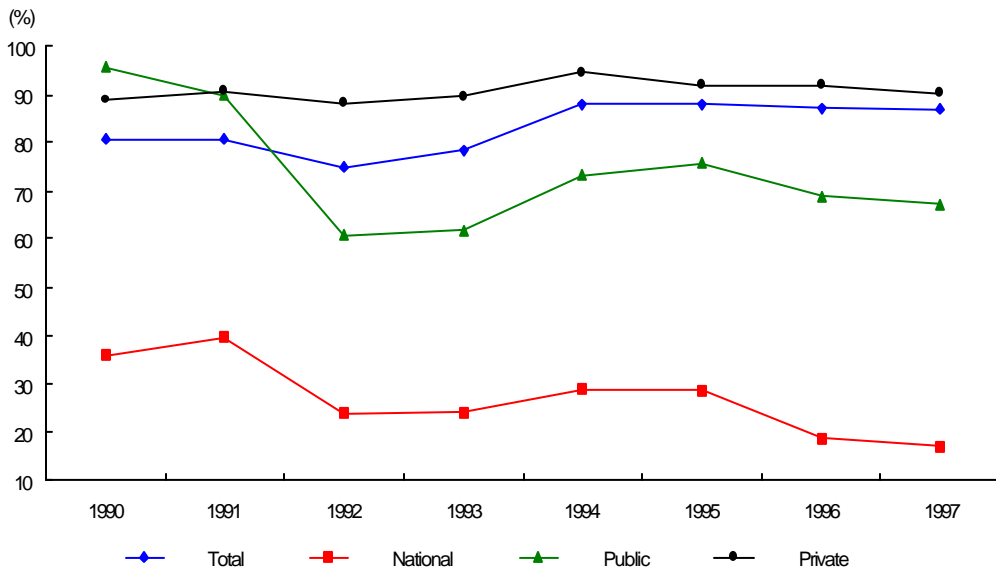
	Total		National		Public		Private	
	Number	Rate	Number	Rate	Number	Rate	Number	Rate
1980	205,993	80.01	27,425	69.77	15,261	78.28	163,307	82.21
1985	571,927	85.45	104,283	68.23	12,026	66.36	455,618	91.42
1990	628,235	80.81	51,679	36.16	174,473	95.48	402,083	89.00
1991	573,530	80.56	54,751	39.77	127,777	89.97	391,002	90.46
1992	739,820	75.12	19,063	23.90	173,126	60.76	547,631	88.30
1993	955,182	78.44	17,577	24.09	193,219	61.64	744,386	89.56
1994	1,207,076	87.88	19,213	28.94	171,433	73.29	1,016,430	94.70
1995	1,460,053	87.92	15,676	28.46	137,633	75.57	1,306,744	91.80
1996	1,936,344	87.18	16,209	18.72	126,315	68.91	1,793,820	91.93
1997	2,289,544	86.67	30,023	17.23	143,384	67.29	2,116,137	90.35

Source : Ministry of Labour,
Yearbook of Labour Statistics, various years.

1) Rate of Job Placement was obtained by dividing the number of job placement by the number of job guidance.

3-26G.

Job Placement by Type of Employment Security Offices (in Number & %)



4-1. Number of Graduates by Vocational School Level

In person

	Vocational High Schools		Junior Colleges		Industrial Universities (Polytechnic Universities)	
	Total	Female	Total	Female	Total	Female
1980	201,057	79,835	-	-	-	-
1981	217,816	88,463	51,935	13,687	-	-
1982	245,816	105,992	57,143	20,102	-	-
1983	262,821	116,578	72,632	25,203	-	-
1984	271,485	122,092	68,406	28,132	619	-
1985	276,535	128,825	73,927	33,260	848	-
1986	280,814	140,047	75,572	34,528	2,932	-
1987	271,274	131,985	82,657	38,732	4,744	-
1988	260,284	131,275	83,240	41,162	7,247	-
1989	259,771	131,330	85,129	44,221	7,123	-
1990	274,150	142,522	87,131	46,022	7,565	-
1991	272,365	144,348	93,166	50,803	7,808	-
1992	274,677	147,484	106,417	56,876	9,511	-
1993	272,541	147,813	111,855	60,287	10,831	-
1994	263,962	142,740	128,366	70,467	11,512	-
1995	259,133	138,144	143,075	77,640	14,560	3,938
1996	274,696	147,054	155,326	83,806	17,147	4,452
1997	273,912	145,551	175,965	98,357	20,018	5,103

Source : Ministry of Education,
Statistical Yearbook of Education, various years.

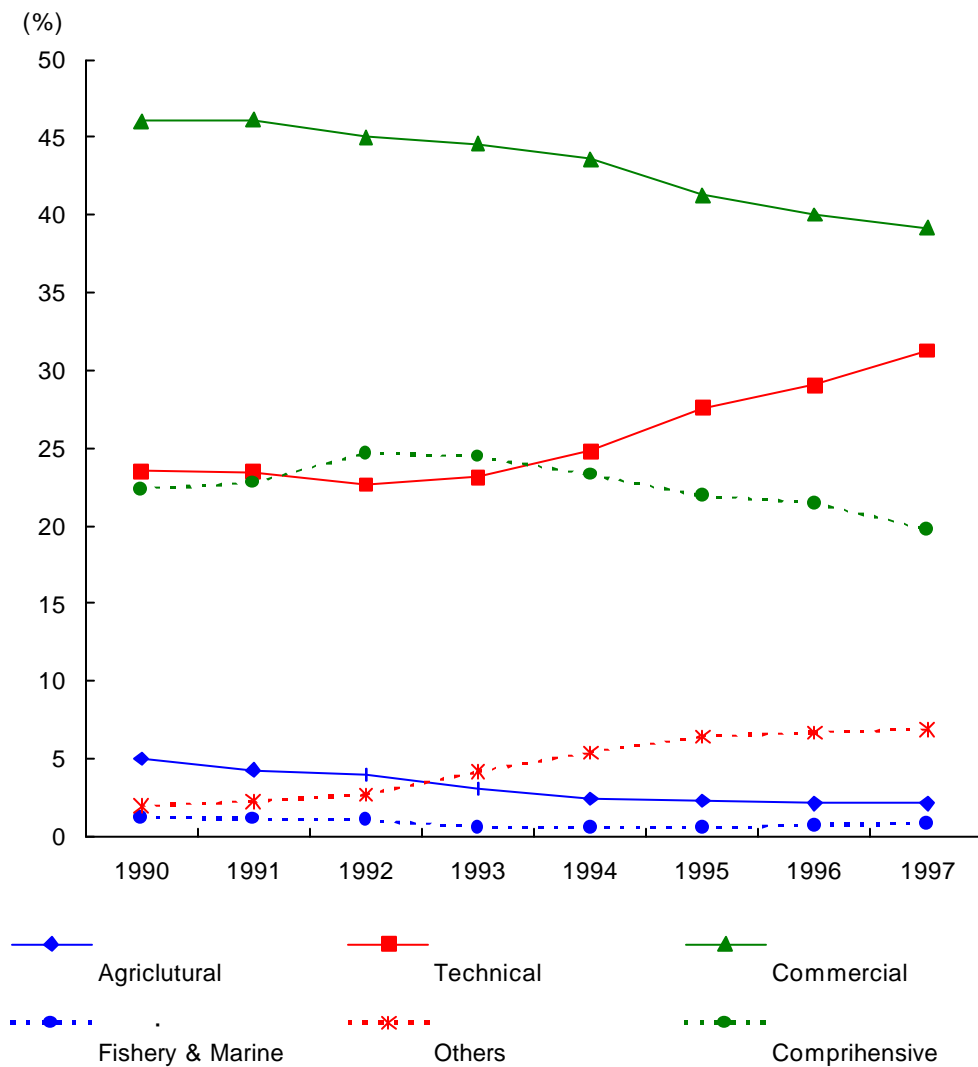
4-2.

Number of Vocational High School Graduates by School Type

	In person, (%)						
	Total	Agricultural	Technical	Commercial	Fishery & Marine	Comprehensive	Vocational
1980	198,478 (100.0)	15,857 (8.0)	55,308 (27.9)	85,088 (42.9)	2,133 (1.1)	30,439 (15.3)	9,653 (4.9)
1985	276,535 (100.0)	17,239 (6.2)	63,613 (23.0)	115,096 (41.6)	3,253 (1.2)	64,160 (23.2)	13,174 (4.8)
1990	274,050 (100.0)	13,716 (5.0)	64,470 (23.5)	126,171 (46.0)	3,166 (1.2)	61,204 (22.3)	5,323 (1.9)
1991	272,365 (100.0)	11,642 (4.3)	63,955 (23.5)	125,620 (46.1)	3,074 (1.1)	61,979 (22.8)	6,095 (2.2)
1992	274,677 (100.0)	10,945 (4.0)	62,173 (22.6)	123,629 (45.0)	2,812 (1.0)	67,742 (24.7)	7,376 (2.7)
1993	272,541 (100.0)	8,392 (3.1)	63,012 (23.1)	121,524 (44.6)	1,604 (0.6)	66,640 (24.5)	11,369 (4.2)
1994	263,962 (100.0)	6,349 (2.4)	65,409 (24.8)	115,076 (43.6)	1,472 (0.6)	61,406 (23.3)	14,250 (5.4)
1995	259,133 (100.0)	5,975 (2.3)	71,486 (27.6)	106,912 (41.3)	1,317 (0.5)	56,779 (21.9)	16,664 (6.4)
1996	274,696 (100.0)	5,779 (2.1)	79,692 (29.0)	109,996 (40.0)	1,977 (0.7)	58,937 (21.5)	18,315 (6.7)
1997	273,912 (100.0)	5,833 (2.1)	85,649 (31.3)	107,322 (39.2)	2,187 (0.8)	54,081 (19.7)	18,840 (6.9)

Source : Ministry of Education,
Statistical Yearbook of Education, various years.

4-2G. Distribution of Vocational High School Graduates by School Type



4-3. Junior College Graduates by Field of Study

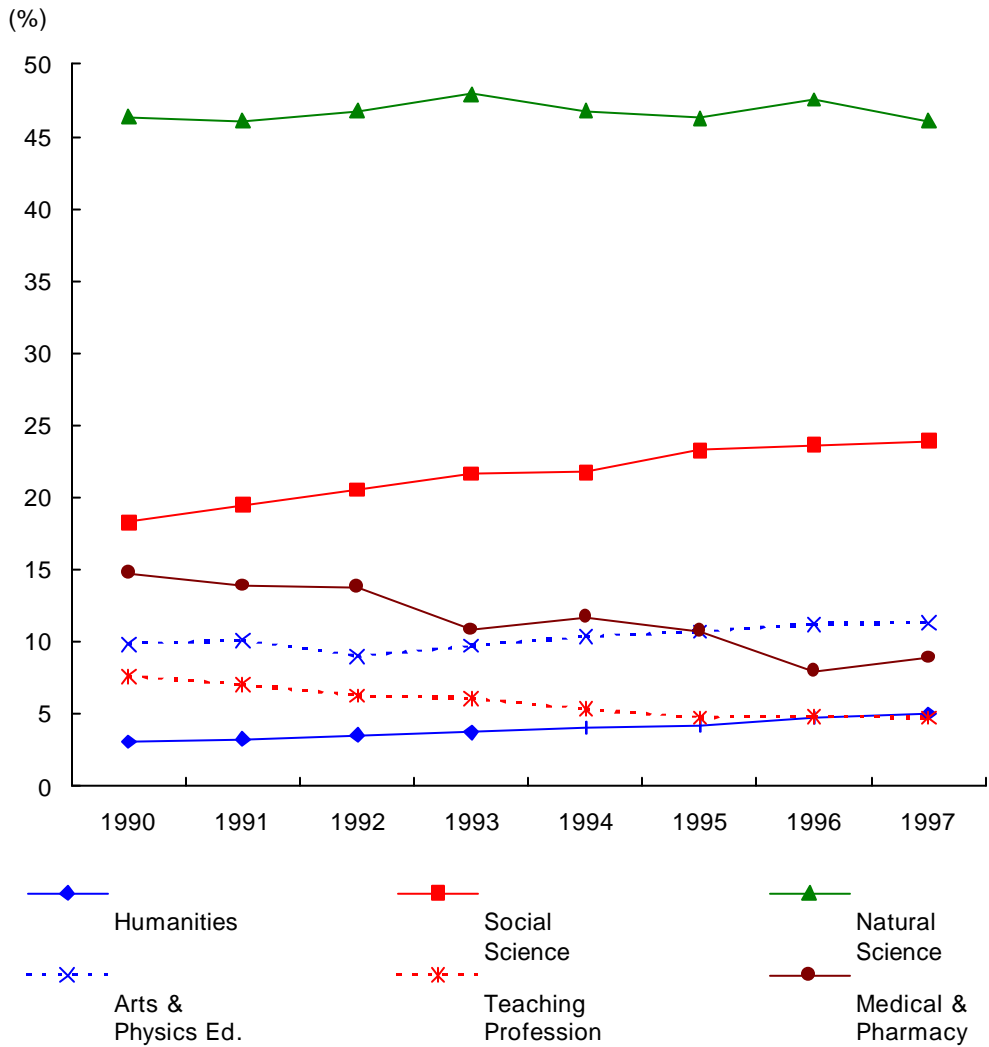
: , (%)

In person, (%)

	Total	Humanities	Social Sciences	Natural Sciences	Arts & Physical Ed	Medical & Pharmacy	Teaching Profession
1985	73,927 (100.0)	1,182 (1.6)	13,266 (17.9)	36,877 (49.9)	5,891 (8.0)	10,096 (13.7)	6,615 (8.9)
1990	87,131 (100.0)	2,700 (3.1)	15,930 (18.3)	40,402 (46.4)	8,590 (9.9)	12,863 (14.8)	6,646 (7.6)
1991	93,166 (100.0)	3,085 (3.3)	18,167 (19.5)	42,942 (46.1)	9,437 (10.1)	12,975 (13.9)	6,560 (7.0)
1992	106,417 (100.0)	3,804 (3.6)	21,870 (20.6)	49,767 (46.8)	9,596 (9.0)	14,671 (13.8)	6,709 (6.3)
1993	111,855 (100.0)	4,202 (3.8)	24,219 (21.7)	53,589 (47.9)	10,892 (9.7)	12,126 (10.8)	6,827 (6.1)
1994	128,366 (100.0)	5,199 (4.1)	27,944 (21.8)	60,024 (46.8)	13,308 (10.4)	15,043 (11.7)	6,848 (5.3)
1995	143,075 (100.0)	5,999 (4.2)	33,308 (23.3)	66,211 (46.3)	15,336 (10.7)	15,407 (10.8)	6,814 (4.8)
1996	155,326 (100.0)	7,417 (4.8)	36,736 (23.7)	73,863 (47.6)	17,437 (11.2)	12,377 (8.0)	7,496 (4.8)
1997	175,965 (100.0)	8,859 (5.0)	42,108 (23.9)	81,057 (46.1)	19,933 (11.3)	15,666 (8.9)	8,342 (4.7)

Source : Ministry of Education,
Statistical Yearbook of Education, various years.

4-3G. Distribution of Junior College Graduates by Field of Study



4-4. Graduates from Private Institutes by Field

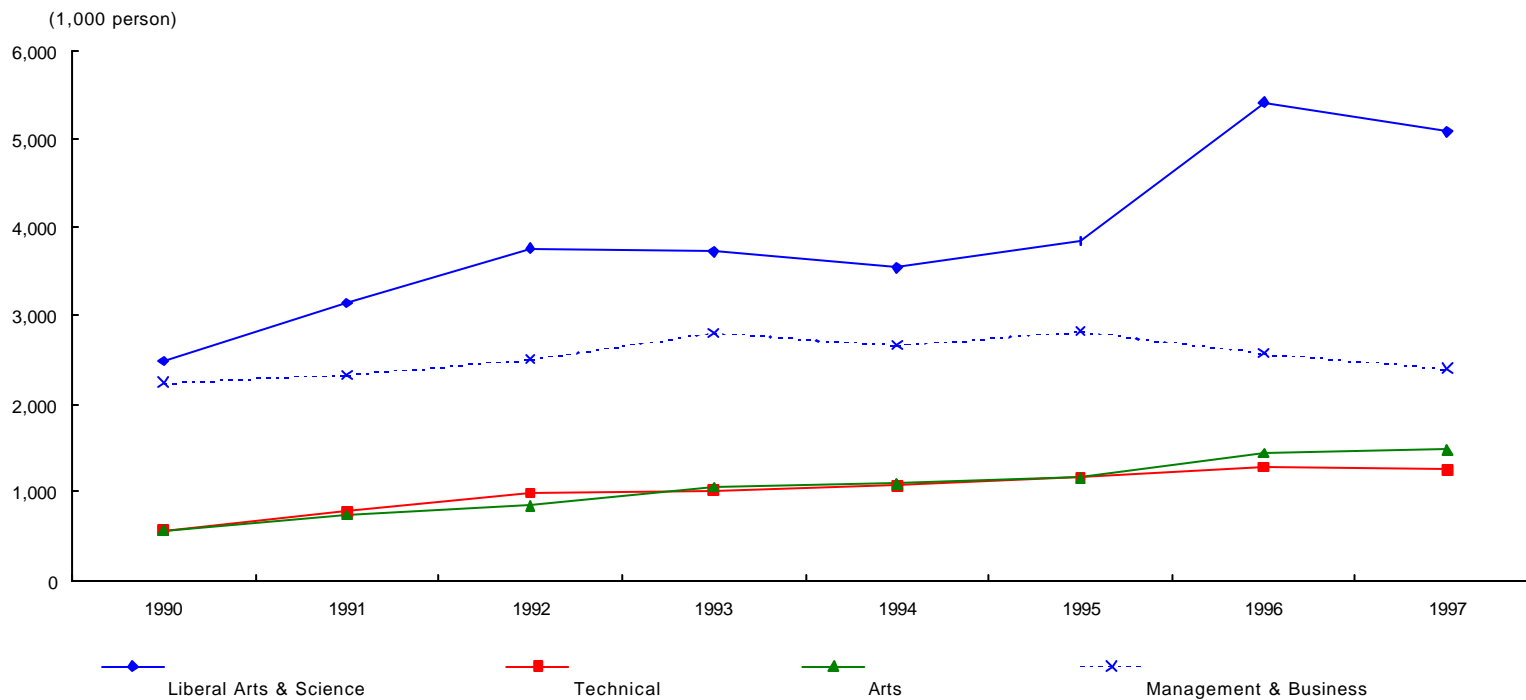
In person

	1) Total		Liberal Arts & Science		Technical		Arts		Management & Business	
	Total	Female	Total	Female	Total	Female	Total	Female	Total	Female
1980	411,162	183,748	117,618	35,905	52,030	12,076	52,808	35,261	123,922	87,147
1985	654,039	292,967	126,456	37,568	72,503	21,056	129,752	86,166	232,352	129,353
1990	1,793,583	856,457	408,205	145,616	267,289	94,847	383,569	241,286	731,138	372,277
1991	2,193,947	1,048,391	519,237	193,999	357,474	134,234	455,831	287,590	857,007	429,376
1992	2,541,065	1,229,147	596,607	227,614	422,751	164,952	553,674	346,294	961,899	485,560
1993	2,733,899	1,339,868	626,192	246,402	427,509	178,515	616,556	387,708	1,058,119	522,847
1994	3,065,918	1,497,382	778,378	312,150	454,766	199,251	701,474	434,870	1,124,540	545,770
1995	3,230,275	1,606,536	879,993	375,574	435,869	193,465	721,381	457,183	1,185,096	573,887
1996	3,438,802	1,729,678	1,146,704	509,432	452,391	219,436	848,656	519,935	991,051	480,875
1997	3,537,673	1,783,962	1,298,773	592,055	432,518	210,087	892,498	539,162	913,884	442,658

Source : Ministry of Education,
Statistical Yearbook of Education, various years.

1) 가 , 가
The total number of graduates includes also graduates in the field of home economics, physical education, and other fields.

4-4G. Graduates from Private Institutes by Field



4-5.

1)

Advancement Rate of Vocational School Graduates to Higher Educational Institutions

: %

%

	Vocational High Schools	Junior Colleges	Industrial Universities (Polytechnic Universities)
1980	10.20	—	—
1985	13.30	9.46	—
1990	8.30	7.71	—
1991	7.80	7.38	—
1992	8.70	7.40	4.20
1993	9.70	8.40	4.71
1994	15.10	6.56	4.47
1995	19.20	6.97	3.46
1996	22.00	8.93	5.61
1997	29.20	8.34	4.42

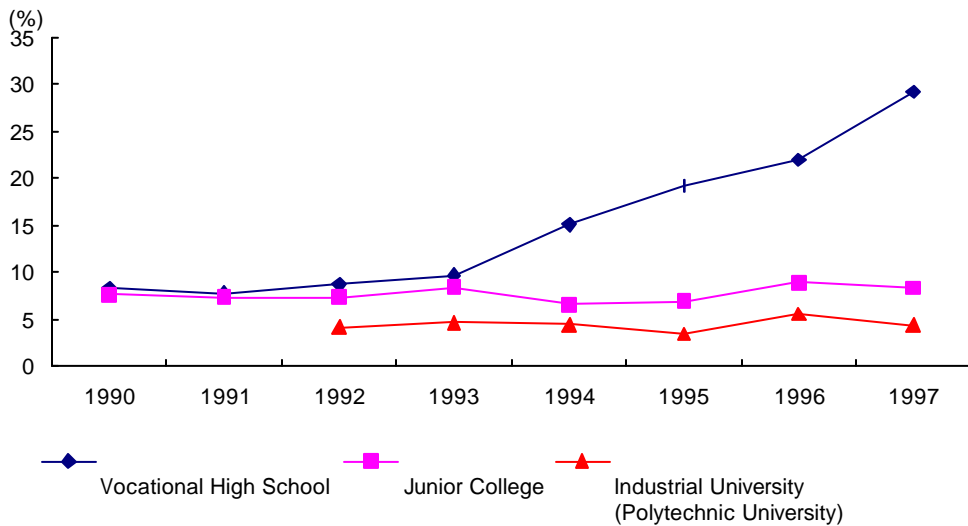
Source : Ministry of Education,
Statistical Yearbook of Education, various years.

$$1) \quad = \left(\frac{\quad}{\quad} \right) * 100$$

Advancement rate = (Entrants to higher school among graduates in a given year/Graduates in a given year) * 100

4-5G.

Advancement Rate of Vocational School Graduates to Higher Educational Institutions



4-6.

1)

Advancement Rate of Vocational High School Graduates to Higher Educational Institutions

: , %

In person, %

Entrants for Higher Schooling								
	Applicants	Rate of Applicants	Total	Junior Colleges	Teachers' Colleges	College & Universities	Miscellaneous School	Rate
1980	62,678	31.6	20,242	11,023	307	8,104	808	10.2
1985	83,033	30.0	36,910	24,386	219	11,842	463	13.3
1990	60,570	22.1	22,710	14,989	106	7,261	354	8.3
1991	59,789	22.0	21,302	13,544	112	7,266	380	7.8
1992	63,517	23.1	23,851	15,110	172	8,135	434	8.7
1993	70,045	25.7	26,481	16,266	171	9,527	517	9.7
1994	80,675	30.6	39,914	26,628	296	12,131	859	15.1
1995	92,288	35.6	49,699	33,070	317	15,957	355	19.2
1996	107,962	39.3	60,373	40,171	311	19,225	666	22.0
1997	129,934	47.4	79,961	54,163	210	24,751	837	29.2

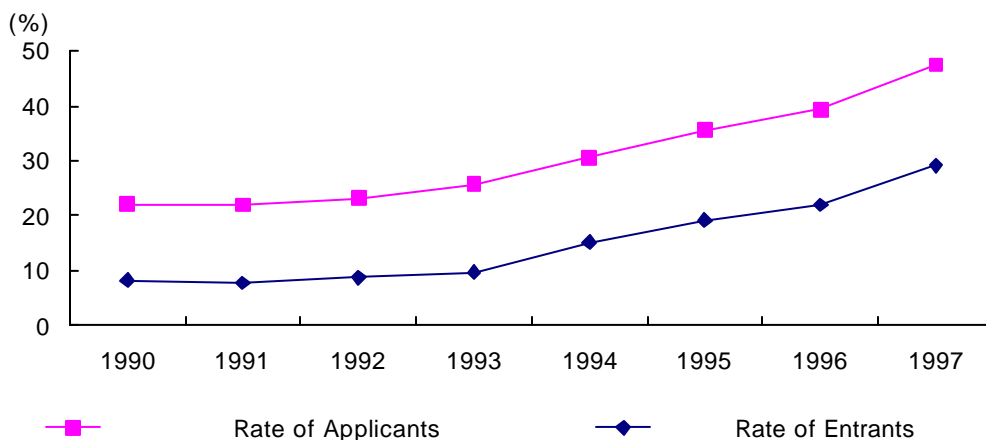
Source : Ministry of Education, Statistical Yearbook of Education, various years.

1) = (/) * 100

Advancement rate = (Entrants to higher school among graduates in a given year/Graduates in a given year) * 100

4-6G.

Advancement Rate of Vocational High School Graduates to Higher Educational Institutions



4-7.

1)

Advancement Rate of Junior College Graduates to Higher Educational Institutions

: , %

In person, %

	Applicants	Rate of Applicants	Entrants for Higher Schooling				Rate
			Total	College & Universities	Graduates	Miscellaneous School	
1985	16,205	21.9	6,991	5,896	—	1,095	9.46
1990	11,141	12.8	6,718	4,609	—	2,109	7.71
1991	12,720	13.7	6,875	5,911	—	964	7.38
1992	14,969	14.1	7,878	7,293	—	585	7.40
1993	15,775	14.1	9,399	8,615	—	784	8.40
1994	15,412	12.0	8,417	8,066	—	351	6.56
1995	16,054	11.2	9,972	8,848	—	1,124	6.97
1996	19,071	12.3	13,874	13,212	1	661	8.93
1997	23,673	13.5	14,671	14,178	10	483	8.34

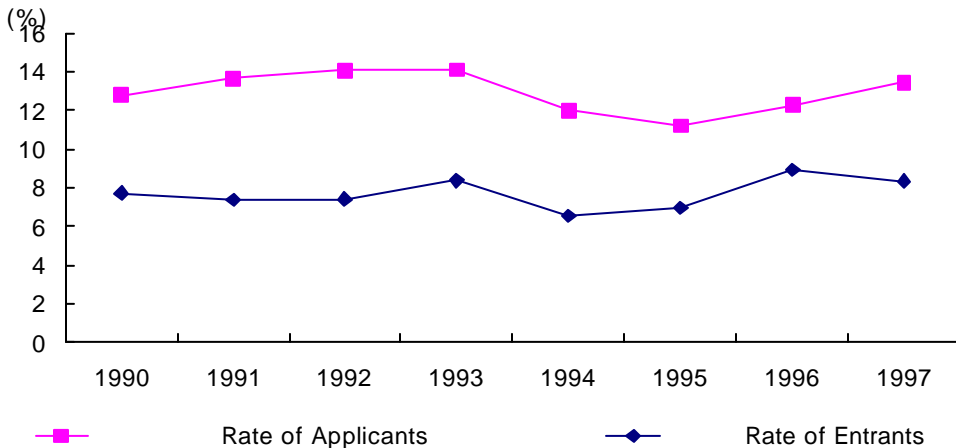
Source : Ministry of Education, Statistical Yearbook of Education, various years.

1)
$$= \left(\frac{\text{Entrants to higher school among graduates in a given year}}{\text{Graduates in a given year}} \right) * 100$$

Advancement rate = (Entrants to higher school among graduates in a given year/Graduates in a given year) * 100

4-7G.

Advancement Rate of Junior College Graduates to Higher Educational Institutions



4-8. Advancement Rate of Industrial University Graduates to Higher Educational Institutions

1)

: , %

In person, %

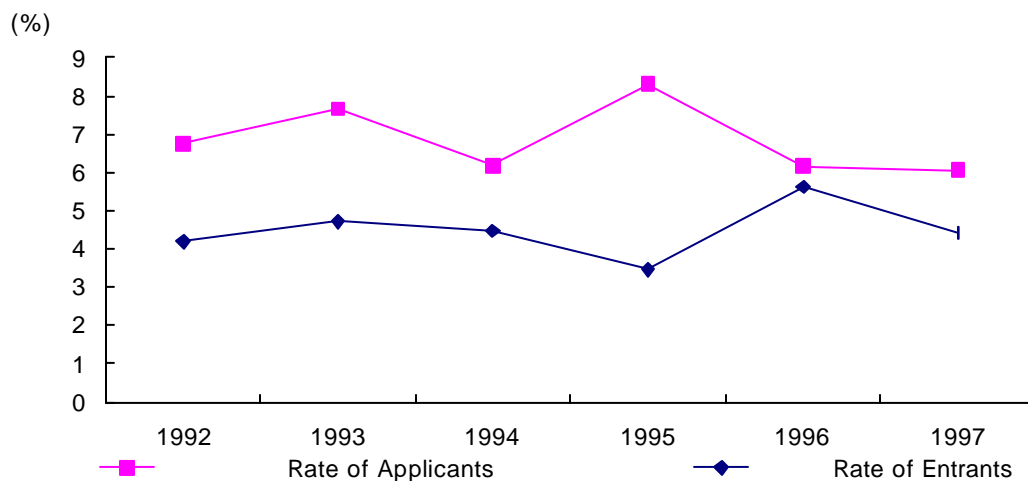
	Entrants for Higher Schooling						Rate
	Applicants	Rate of Applicants	Total	College & Universities	Graduates	Miscellaneous School	
1992	642	6.8	399	–	396	3	4.20
1993	829	7.7	510	1	508	1	4.71
1994	712	6.2	515	–	504	11	4.47
1995	1,208	8.3	504	–	493	11	3.46
1996	1,055	6.2	962	5	946	11	5.61
1997	1,212	6.1	884	23	840	21	4.42

Source : Ministry of Education, Statistical Yearbook of Education, various years.

1) = (/) * 100

Advancement rate = (Entrants to higher school among graduates in a given year/Graduates in a given year) * 100

4-8G. Advancement Rate of Industrial University Graduates to Higher Educational Institutions



4-9.

1)

Employment Rates of Graduates by Vocational School Level

: , %

In person, %

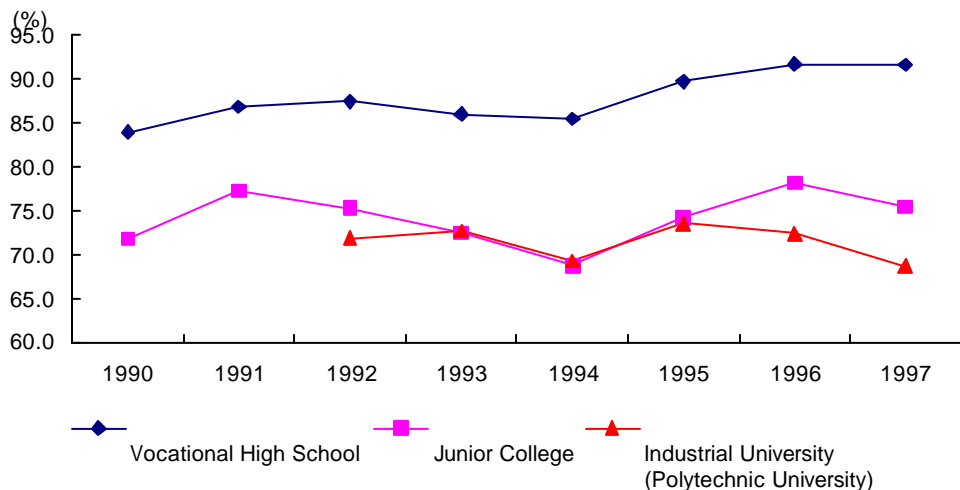
	Vocational High Schools		Junior Colleges		Industrial Universities (Polytechnic Universities)	
	Employed Persons	Rate	Employed Persons	Rate	Employed Persons	Rate
1985	143,214	60.4	29,556	57.2	—	—
1990	210,113	84.0	47,094	71.8	—	—
1991	217,344	86.9	57,078	77.3	—	—
1992	218,888	87.5	64,103	75.3	6,444	71.9
1993	209,871	86.0	65,020	72.5	7,747	72.7
1994	192,165	85.5	73,665	68.8	7,454	69.3
1995	190,148	89.8	88,843	74.2	10,161	73.6
1996	196,403	91.8	102,648	78.2	11,533	72.4
1997	177,532	91.7	115,096	75.5	12,963	68.7

Source : Ministry of Education, Statistical Yearbook of Education, various years.

1) Employment rate of graduates = { (No. of employed graduates / (No. of graduates - No. of entrants to higher school level - No. of enlisted in the army)) * 100 }

4-9G.

Employment Rates of Graduates by Vocational School Level



4-10.

Rate of Employment in the Major Field at Each Vocational School Level

: , %

In person, %

	Vocational High Schools		Junior Colleges		Industrial Universities (Polytechnic Universities)	
	Number	Rate	Number	Rate	Number	Rate
1985	122,448	44.3	23,486	31.8	—	—
1990	174,057	63.5	38,361	44.0	—	—
1991	177,915	65.3	47,331	50.8	—	—
1992	178,381	64.9	51,858	48.7	4,943	52.0
1993	167,695	61.5	51,817	46.3	5,075	46.9
1994	159,100	60.3	58,665	45.7	5,286	45.9
1995	158,483	61.2	69,831	48.8	6,649	45.7
1996	167,184	61.3	80,241	51.7	7,446	43.4
1997	152,047	55.5	89,044	50.6	8,313	41.5

Source : Ministry of Education,

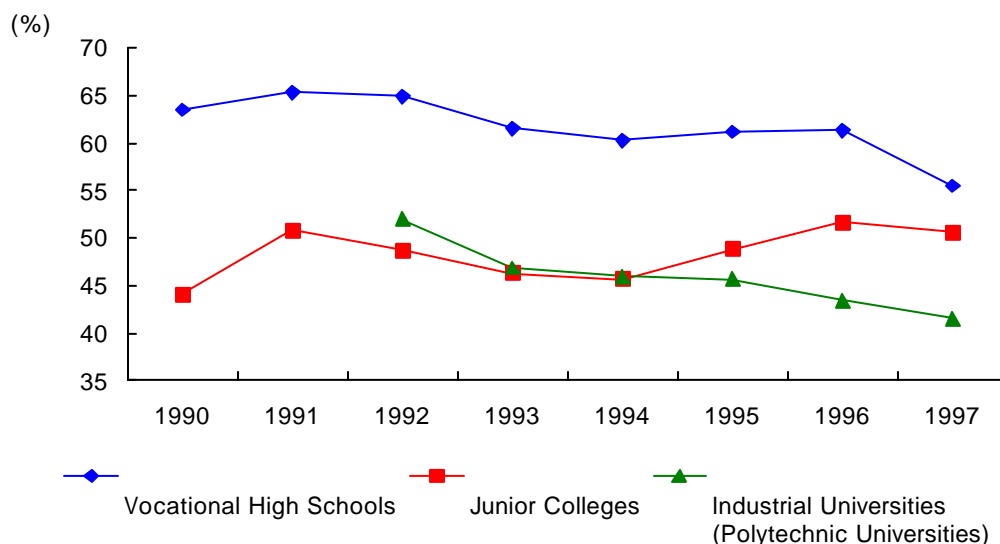
Statistical Yearbook of Education, various years.

$$1) \text{ Rate} = \left\{ \frac{\text{No. of employed graduates}}{\text{No. of graduates} - \text{No. of entrants to higher school level} - \text{No. of enlisted in the army}} \right\} * 100$$

Employment rate of graduates = {No. of employed graduates/
(No. of graduates - No. of entrants to higher school level - No. of enlisted in the army)} * 100

4-10G.

Rate of Employment in the Major Field at Each Vocational School Level



4-11.

1)

Employment Rates of Graduates from Polytechnic College & V.T.I.²⁾

: , %

In Person, %

	K.M.A. ³⁾ Vocational Training			Polytechnic Colleges			Vocational Training Institutes		
	Graduate		Employment	Graduate		Employment	Graduate		Employment
	Number	Rate	Number	Rate	Number	Rate	Number	Rate	
1980	7,307	5,956	81.5	-	-	-	-	-	-
1985	9,387	9,042	96.3	-	-	-	-	-	-
1990	13,375	12,382	92.6	-	-	-	-	-	-
1991	16,274	15,622	96.0	-	-	-	-	-	-
1992	16,621	16,215	97.6	-	-	-	-	-	-
1993	16,346	15,285	93.5	-	-	-	-	-	-
1994	13,716	13,716	100.0	-	-	-	-	-	-
1995	-	-	-	15,121	13,475	89.1	8,295	7,366	88.8
1996	-	-	-	12,889	10,558	81.9	7,828	6,783	86.7
1997	-	-	-	10,141	7,863	77.5	6,556	5,350	81.6

Source : Ministry of Labour,

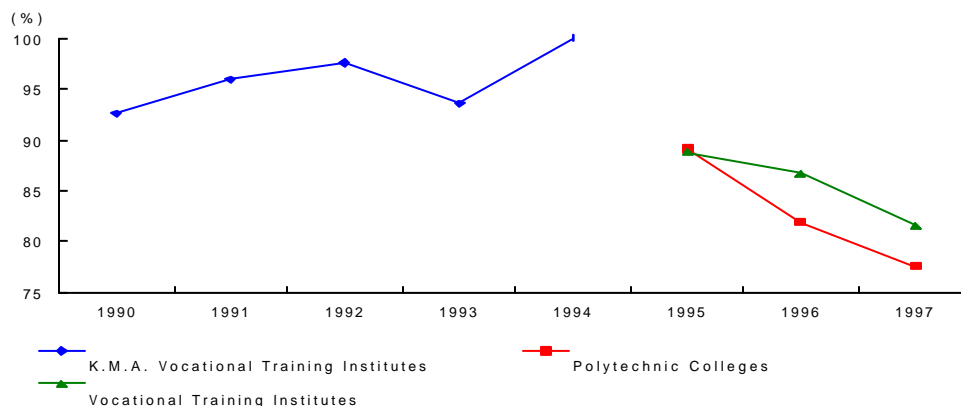
Yearbook of Vocational Training, various years.

$$1) \text{ Employment rate of graduates} = \left\{ \frac{\text{No. of employed graduates}}{\text{No. of graduates} - \text{No. of entrants to higher school level} - \text{No. of enlisted in the army}} \right\} * 100$$

2) V.T.I. : Vocational Training Institute.
3) K.M.A : Korea Manpower Agency

4-11G.

Employment Rates of Graduates from Polytechnic College & V.T.I.



4-12. 가 Registrants of National Qualification of Skill (NQS) by Qualification Field

: , %

In person, %

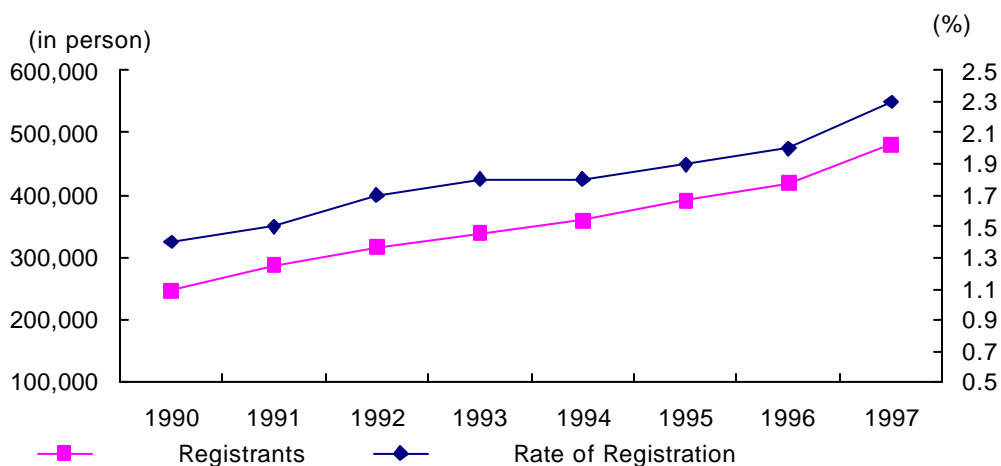
Technical Qualification Registrants							
	Total	Technical	Professional Engineer	Craftsman	Master Craftsman	Service	Percentage of Technical Qualification Registrants
1980	134,554	31,769	243	102,785	-	-	1.0
1985	207,379	27,450	234	137,633	23	42,296	1.4
1990	247,837	31,322	513	194,801	72	21,714	1.4
1991	288,176	35,829	671	222,422	94	29,925	1.5
1992	316,362	46,341	1,059	270,021	184	-	1.7
1993	339,564	62,203	1,045	277,361	437	-	1.8
1994	360,051	75,527	1,084	284,524	532	-	1.8
1995	391,842	81,312	2,602	310,530	383	-	1.9
1996	419,338	81,424	2,034	337,914	507	-	2.0
1997	480,953	89,145	2,343	391,808	376	-	2.3

Office, , 1998.

Source : National Statistical

Social Indicators in Korea, 1998.

4-12G. 가 Registrants of National Qualification of Skill (NQS) by Qualification Field



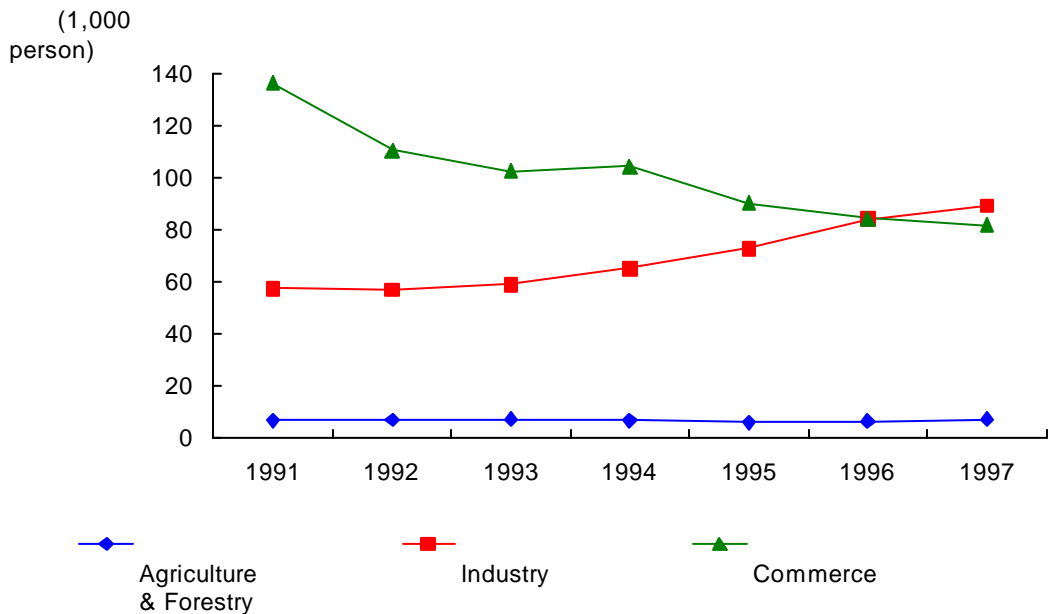
4-13. 가 National Qualification of Skill (NQS) Acquisitions among Vocational High School Students by Field

In person

	Total	Agriculture	Industry	Commerce	Fishery & Marine	Housekeeping Practical Arts	Humanities Arts
1991	203,736	6,523	57,098	136,255	1,932	-	1,928
1992	178,543	6,677	56,581	110,474	1,809	143	2,859
1993	173,590	6,804	58,889	102,436	1,733	52	3,676
1994	180,277	6,350	64,932	104,103	1,362	130	3,400
1995	171,698	5,531	72,563	89,999	1,113	188	2,304
1996	177,975	6,038	83,827	84,183	1,116	527	2,284
1997	180,854	6,812	89,082	81,547	1,626	204	1,583

Source : Ministry of Education,
Statistical Yearbook of Education, various years.

4-13G. 가 National Qualification of Skill (NQS) Acquisitions among Vocational High School Students by Field



4-14. 가 National Qualification of Skill (NQS) Acquisition among Junior College Students by Field

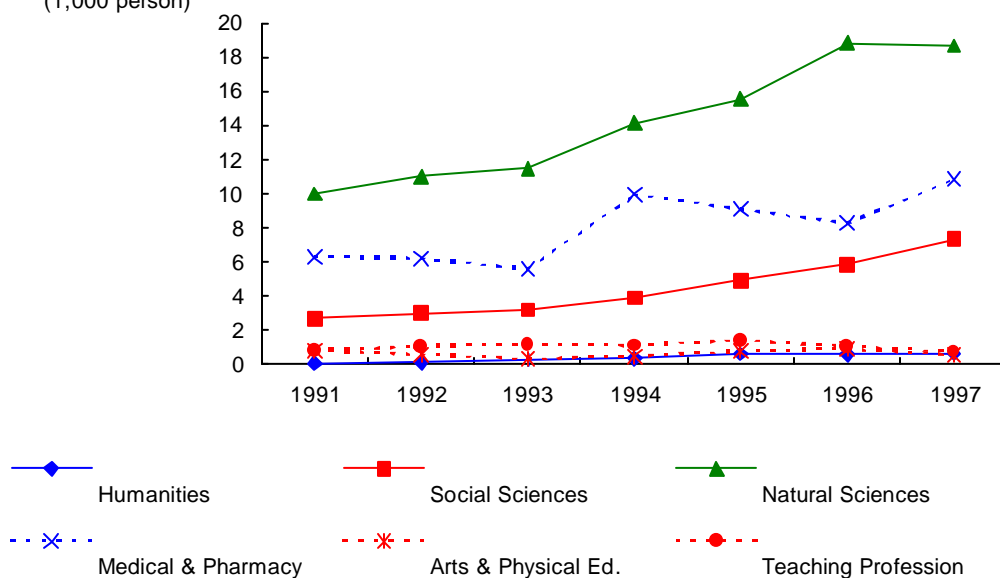
In person

	Total	Humanities	Social Sciences	Natural Sciences	Medical & Pharmacy	Arts & Physical Ed.	Teaching Profession
1991	20,743	99	2,703	9,995	6,285	832	829
1992	22,026	105	3,019	11,033	6,208	586	1,075
1993	22,027	257	3,203	11,468	5,585	341	1,173
1994	29,910	352	3,899	14,112	9,956	486	1,105
1995	32,359	619	4,912	15,548	9,075	788	1,417
1996	35,527	574	5,883	18,827	8,253	916	1,074
1997	38,801	664	7,340	18,648	10,845	561	743

Source : Ministry of Education, Statistical Yearbook of Education, various years.

4-14G. 가 National Qualification of Skill (NQS) Acquisition among Junior College Students by Field

(1,000 person)



4-15. 가 National Qualification of Skill (NQS) Acquisitions among Vocational Training Institute Students

: , %

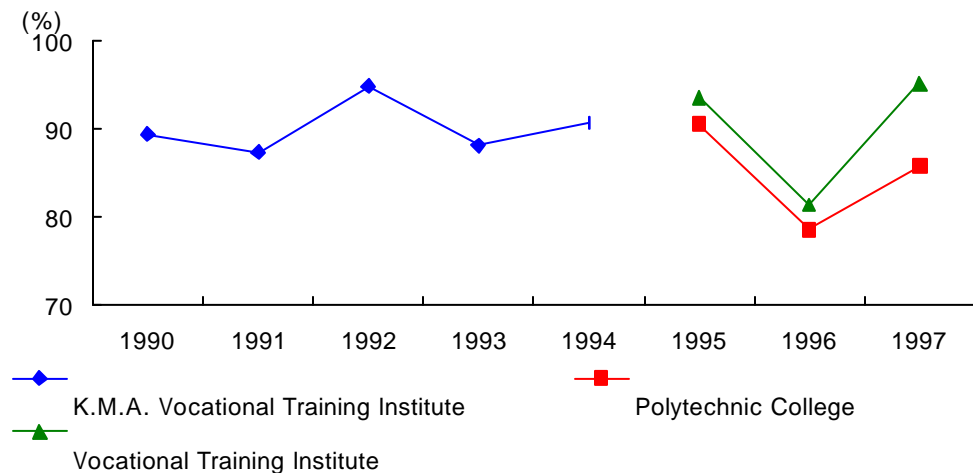
In person, %

	K.M.A. ¹⁾ Vocational Training Institutes			Polytechnic Colleges			Vocational Training Institutes		
	Graduates		Qualification Acquisition	Graduates		Qualification Acquisition	Graduates		Qualification Acquisition
	Number	Rate		Number	Rate	Number	Rate		
1980	7,307	5,956	81.5	-	-	-	-	-	-
1985	9,387	9,168	97.7	-	-	-	-	-	-
1990	13,375	11,960	89.4	-	-	-	-	-	-
1991	14,579	12,747	87.4	-	-	-	-	-	-
1992	13,301	12,630	95.0	-	-	-	-	-	-
1993	16,385	14,440	88.1	-	-	-	-	-	-
1994	15,220	13,810	90.7	-	-	-	-	-	-
1995	-	-	-	15,121	13,697	90.6	8,295	7,765	93.6
1996	-	-	-	12,889	10,135	78.6	7,828	6,373	81.4
1997	-	-	-	10,141	8,702	85.8	6,556	6,244	95.2

Source : Ministry of Labour, *Yearbook of Vocational Training*, various years.

1) K.M.A. : Korea Manpower Agency

4-15G. 가 Rate of National Qualification of Skill (NQS) Acquisition among Vocational Training Institute Students

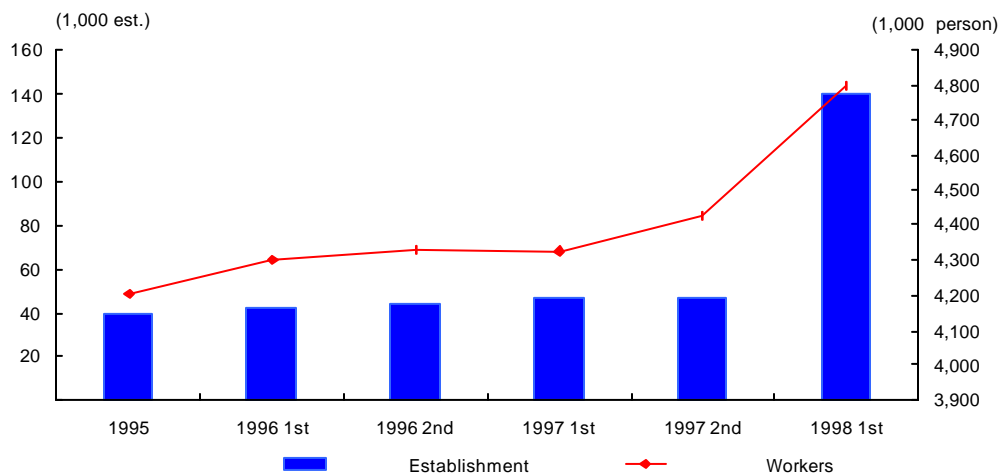


4-16. Participation in National Employment Insurance Activities

	In establishment, Person 가					
	Establishment	Person	Male	Female	Mandatory Establishment	Optional Establishment
1995	38,953	4,204,158	3,041,820	1,162,338	38,282	671
1996						
1st Half	41,764	4,300,725	3,128,637	1,172,088	40,662	1,102
2nd Half	43,723	4,330,885	3,155,323	1,175,562	42,514	1,209
1997						
1st Half	46,300	4,325,940	3,164,386	1,161,554	44,988	1,312
2nd Half	47,427	4,428,430	-	-	46,316	1,111
1998						
1st Half	140,200	4,796,775	-	-	140,017	183

Source : Ministry of Labour,
Monthly Statistics of Employment Insurance, Issues.

4-16G. Participation in National Employment Insurance Activities



4-17.
Participation in National Vocational Competency Development Plan

		In establishment, Person			
		1995	1996	1997	1998 ¹⁾
Total	Establishments	–	4,529	8,863	9,194
	Persons	10,034	106,635	199,880	218,215
Education & Training Fund	Establishments	–	2,336	4,538	5,540
	Persons	6,376	50,060	102,683	99,435
Equipment Purchasing Loan	Establishments	–	–	2	–
	Persons	–	–	–	–
Tuition Fund for Elderly	Establishments	–	–	–	–
	Persons	42	–	–	–
Tuition Loan	Establishments	–	1,734	3,748	3,035
	Persons	–	2,954	8,365	5,810
Displaced Worker Training Fund	Establishments	–	–	–	–
	Persons	115	923	1,949	59,915

Source : Ministry of Labour,
Monthly Statistics of Employment Insurance, Issues.

1) 1998

The year 1998 includes only the data for the 1st half of 1998.

5-1.1 GNP per Capita

In US dollars

	1990	1991	1992	1993	1994	1995	1996	
North America								
	20,450	20,510	21,070	19,960	19,570	19,380	19,020	Canada
	21,700	22,340	23,830	24,780	25,860	26,980	28,020	U.S.A
Asia & Pacific								
	5,883	6,757	7,007	7,007	8,467	10,037	10,543	Korea, Rep. of
	17,080	17,120	17,730	17,730	17,980	18,720	20,090	Australia
	25,430	26,840	28,690	28,690	34,630	39,640	40,940	Japan
	12,680	12,360	12,660	12,660	13,190	14,340	15,720	New Zealand
Europe								
	19,240	20,200	22,790	23,500	24,950	26,890	28,110	Austria
	15,440	19,010	21,360	21,650	22,920	24,710	26,440	Belgium
	22,090	23,760	26,310	26,580	28,110	29,890	32,100	Denmark
	26,070	23,930	22,690	19,400	18,850	20,580	23,240	Finland
	19,480	20,460	22,630	22,490	23,470	24,990	26,270	France
	22,730	20,510	23,360	23,980	25,580	27,510	28,870	Germany
	9,550	11,150	12,850	13,010	13,630	14,710	17,110	Ireland
	16,850	18,580	20,790	19,840	19,270	19,020	19,880	Italy
	28,770	31,860	35,800	37,100	39,850	41,210	-	Luxembourg
	17,330	18,840	20,850	20,950	21,970	24,000	25,940	Netherland
	4,890	6,180	7,510	8,950	9,370	9,740	10,160	Portugal
	10,920	12,480	14,230	13,580	13,280	13,580	14,350	Spain
	23,680	25,180	27,500	24,740	23,630	23,750	25,710	Sweden
	16,070	16,600	18,110	18,050	18,410	18,700	19,600	United Kingdom
OECD Other OECD Countries								
	23,120	24,090	26,280	25,960	26,480	31,250	34,510	Norway
	1,700	1,790	1,950	2,250	2,470	2,790	3,230	Poland
	34,790	33,710	36,730	35,750	37,180	40,630	44,350	Switzerland

: , , 1998.

Source : National Statistical Office,
International Statistics Yearbook, 1998.
The Bank of Korea, *National Accounts*, 1997.
The World Bank, *World Development Indicators*, various years.
The Central Bank of China, *Financial Statistics*, 1998.2.

5-2. 1 GDP per Capita

In US dollars

	1990	1991	1992	1993	1994	1995	1996	
North America								
	21,588	20,998	20,006	19,087	18,701	19,392	20,081	Canada
	22,983	23,419	24,448	25,385	26,606	27,607	28,646	U.S.A
Asia & Pacific								
	5,916	6,795	7,038	7,530	8,528	10,124	10,636	Korea, Rep. of
	17,271	17,168	16,641	16,042	18,207	19,434	21,383	Australia
	24,042	27,454	29,918	34,291	37,524	41,009	36,575	Japan
	12,817	12,276	11,666	12,661	14,728	17,011	18,455	New Zealand
Europe								
	20,495	21,127	23,552	22,855	24,672	28,985	-	Austria
	19,434	20,150	22,352	21,248	22,993	26,950	-	Belgium
	25,122	25,132	27,430	25,984	27,985	33,027	33,127	Denmark
	27,015	23,734	21,119	16,657	19,179	24,457	-	Finland
	21,072	21,052	23,047	21,677	22,988	26,399	26,357	France
	18,947	21,500	24,443	23,503	25,132	29,570	28,720	Germany
	12,884	12,954	14,401	13,277	14,619	17,309	-	Ireland
	18,973	20,274	21,442	17,268	17,768	18,978	21,155	Italy
	23,656	30,846	35,826	35,213	35,853	-	-	Luxembourg
	18,966	19,243	21,207	20,389	21,735	25,584	25,293	Netherland
	6,791	7,736	9,336	8,476	8,806	10,422	-	Portugal
	12,666	13,582	14,799	12,256	12,354	14,269	14,791	Spain
	26,841	27,764	28,553	21,308	22,575	26,116	28,308	Sweden
	17,088	17,620	18,228	16,287	17,550	18,906	-	United Kingdom
OECD Other OECD Countries								
	27,230	27,643	29,442	26,940	28,455	33,634	36,028	Norway
	1,547	2,000	2,199	2,236	2,403	3,056	-	Poland
	34,039	34,221	35,391	34,112	37,363	43,797	41,632	Switzerland

: , 1998.

Source : National Statistical Office,
International Statistics Yearbook, 1998.
The Bank of Korea, *National Accounts*, 1997.
IMF, *International Financial Statistics*, 1998. 3.
The Central Bank of China, *Financial Statistics*, 1998. 2.

5-3. 가 Economically Active Population & Activity Rate

: , %

In 1,000 persons, %

Year	Economically Active Population		Labour Force Participation Rate			
	Total	Male	Total	Male	Female	
North America						
1996	15,145	8,301	64.9	72.4	57.6	Canada
1996	133,943	72,087	66.8	74.9	59.3	U.S.A
Asia & Pacific						
1997	21,604	12,761	62.2	75.9	49.5	Korea, Rep. of
1996	67,110	39,920	63.5	77.7	50.0	Japan
1995	9,001	5,114	63.7	74.0	53.8	Australia
1997	1,813	1,005	65.1	74.4	56.2	New Zealand
Europe						
1996	3,870	2,217	58.1	69.5	47.7	Austria
1995	28,039	17,548	65.6	82.1	49.0	Belgium
1996	2,822	1,528	77.8	83.2	72.3	Denmark
1996	2,531	1,338	65.7	70.1	61.5	Finland
1996	26,404	14,424	55.3	62.7	48.4	France
1996	39,455	22,564	57.3	68.1	47.3	Germany
1995	4,244	2,625	49.7	64.7	36.1	Greece
1996	1,494	918	54.2	67.8	41.1	Ireland
1996	22,849	14,234	44.8	61.5	34.6	Italy
1996	7,460	4,337	70.8	81.1	60.3	Netherland
1996	4,811	2,648	57.6	67	49.2	Portugal
1996	15,936	9,793	49.6	63.1	37.0	Spain
1996	4,310	2,250	77.8	80	75.6	Sweden
1996	28,552	15,992	62.4	71.9	53.5	United Kingdom
OECD Other OECD Countries						
1996	5,199	2,908	61.4	71.5	52.1	Czech Rep.
1996	2,246	1,216	71.4	76.8	65.9	Norway
1996	17,076	9,228	58.2	66.2	51.0	Poland
1996	3,925	2,213	67.3	78.5	56.8	Switzerland
1996	23,030	16,208	49.9	70.6	29.4	Turkey

: , , 1998.

Source : National Statistical Office,

International Statistics Yearbook, 1998.

National Statistical Office,

Annual Report on the Economically Active Population Survey, 1997.

ILO, Yearbook of Labor Statistics, 1996, 1997.

5-4. Composition of Employed Persons by Industry

: , %

In 1,000 person, %

Year	Total Employed Person	Agri., Forestry & Fishery	Mining & Manufac- turing	Manufac- turing	SOC Others	Not & Adequatel y Defined	
North America							
1996	13,676	4.1	16.5	15.2	79.4	-	Canada
1996	126,708	2.8	16.6	16.2	80.3	-	U.S.A
Asia & Pacific							
1996	20,746	11.6	22.6	22.5	65.8	-	Korea, Rep. of
1996	64,860	5.5	22.4	22.3	71.7	0.4	Japan
1994	7,921	5.1	15.1	14.0	79.8	-	Australia
1996	1,688	9.5	17.3	17.0	72.8	0.4	New Zealand
Europe							
1996	2,130	6.4	27.4	27.0	66.2	-	Austria
1992	3,773	2.7	23.2	22.9	74.1	-	Belgium
1996	1,441	5.5	24.6	24.4	69.7	0.2	Denmark
1994	22,110	4.7	19.1	18.8	76.2	-	France
1996	35,892	3.0	24.5	23.8	72.5	-	Germany
1996	6,971	3.7	15.6	15.5	78.3	2.4	Netherland
1996	4,467	12.2	22.1	21.7	65.7	-	Portugal
1996	3,963	2.9	19.6	19.4	77.4	0.1	Sweden
1996	26,219	2.0	19.6	19.2	77.9	0.5	United Kingdom
OECD Other OECD Countries							
1996	2,137	5.1	16.0	14.7	78.9	-	Norway
1996	3,789	4.5	20.4	19.7	75.5	-	Switzerland

: , , 1997.

Source : National Statistical Office,
Social Indicators in Korea, 1997.

National Statistical Office,
Annual Report on the Economically Active Population Survey, 1997.
ILO, Yearbook of Labor Statistics, 1996, 1997.

5-5. Unemployment Rate

: %	1990	1991	1992	1993	1994	1995	1996	%
North America								
	8.1	10.4	11.3	11.2	10.4	9.5	9.7	Canada
	5.6	6.8	7.5	6.9	6.1	5.6	5.4	U.S.A
Asia & Pacific								
	2.4	2.3	2.4	2.8	2.4	2.0	2.0	Korea, Rep. of
	2.1	2.1	2.2	2.5	2.9	3.2	3.4	Japan
	6.9	9.6	10.8	10.9	9.8	8.5	8.6	Australia
	7.8	10.3	10.3	9.5	8.2	6.3	6.1	New Zealand
Europe								
	5.4	5.8	5.9	6.8	6.5	6.6	7.0	Austria
	9.6	10.2	11.2	12.9	13.8	14.0	13.8	Belgium
	9.7	10.6	11.3	12.4	12.2	10.3	8.8	Denmark
	3.4	7.6	13.0	17.7	18.2	17.4	16.1	Finland
	8.9	9.4	10.3	11.6	12.3	11.6	12.4	France
	-	7.2	8.7	10.4	11.4	12.9	8.8	Germany
	12.9	14.7	15.3	15.7	14.7	12.2	11.9	Ireland
	11.0	10.9	11.4	10.2	11.1	-	12.1	Italy
	1.3	1.4	1.6	2.1	2.7	-	-	Luxembourg
	7.5	7.0	5.5	6.2	6.8	7.1	6.6	Netherland
	4.7	4.1	4.1	5.5	-	-	7.2	Portugal
	16.3	16.4	18.4	22.7	24.2	22.9	22.2	Spain
	1.6	3.0	5.2	8.2	8.0	7.7	8.0	Sweden
	6.7	8.3	10.2	10.3	9.3	8.5	8.2	United Kingdom
OECD Other OECD Countries								
	5.2	5.5	5.9	6.0	5.4	4.9	4.9	Norway
	6.3	11.8	13.6	16.4	16.0	14.9	13.6	Poland
	0.5	1.1	2.5	4.5	4.7	4.2	4.7	Switzerland

: , , 1998.

Source : National Statistical Office,
International Statistics Yearbook, 1998.
 National Statistical Office,
Annual Report on the Economically Active Population Survey, 1997.
 ILO, *Yearbook of Labor Statistics, 1996, 1997.*

5-6. ()
Average Hours Worked per Week in Manufacturing

							In hours	
	1990	1991	1992	1993	1994	1995	1996	
North America								
	38.2	37.9	38.3	38.6	38.8	38.5	-	Canada
	40.8	40.7	41.0	41.4	42.0	41.6	41.6	U.S.A
Asia & Pacific								
	49.8	49.3	48.7	48.9	48.7	49.2	48.4	Koear, Rep. of
	40.8	40.0	38.8	37.7	37.6	37.8	43.3	Japan
	38.1	37.6	38.0	38.1	38.9	38.7	-	Australia
	40.7	40.4	41.1	41.6	42.0	41.8	41.6	New Zealand
Europe								
1)	139.5	138.2	138.2	137.9	139.6	36.1	36.6	Austria
	33.4	32.7	32.3	32.4	33.0	-	-	Belgium
	31.5	31.5	31.5	31.5	-	-	-	Denmark
	38.7	38.7	38.7	38.6	38.7	-	-	France
	39.5	39.2	38.9	37.6	39.3	38.3	37.4	Germany
	38.8	38.4	38.3	37.8	37.9	38.0	39.2	Ireland
	39.9	39.8	40.5	40.6	-	-	-	Luxembourg
	39.9	39.9	39.8	39.8	38.1	-	-	Netherland
	40.7	39.3	38	38	39	39.7	39.6	Portugal
	37.4	37.2	36.8	36.6	36.8	36.7	36.7	Spain
	38.5	38.4	38.5	37.3	37.8	-	-	Sweden
	42.3	41.3	41.5	41.3	41.6	42.1	41.9	United Kingdom
OECD				Other OECD Countries				
	37	36.8	36.8	36.8	36.9	36.7	36.8	Norway
	41.6	41.5	41.4	41.4	41.4	41.4	41.4	Switzerland

: , , 1998.

Source : National Statistical Office,
International Statistics Yearbook, 1998.
Ministry of Labour, *Yearbook of Labour Statistics*, 1997.
ILO, *Yearbook of Labour Statistics*, 1996, 1997.

1) 1994
Until 1994, the data for Austria indicates hours of work per month.

5-7. 1 Number of Students per Teacher

:

In person

Year	Primary Education	Secondary Education	Tertiary Education	
North America				
94 / 95	16	19	30	Canada
94 / 95	16	15	16	U.S.A
Asia & Pacific				
95 / 96	28	23	26	Korea, Rep. of
94 / 95	19	14	10	Japan
1994	-	13	35	Australia
1994	17	14	13	New Zealand
Europe				
94 / 95	12	9	9	Austria
93 / 94	12	8	10	Belgium
94 / 95	19	13	17	France
94 / 95	17	15	7	Germany
94 / 95	11	-	23	Italy
94 / 95	18	16	19	Spain
94 / 95	11	10	8	Sweden
94 / 95	19	15	17	United Kingdom
OECD Other OECD Countries				
93 / 94	15	-	22	Norway
94 / 95	28	23	27	Turkey

: OECD, OECD , 1998.

Source : OECD, *Education at a glance OECD Indicators*, 1998.

5-8. 25-64

(1996)

Distribution of the Population 25 to 64 Years of Age by Level of Educational Attainment (1996)

: %

%

Below upper Secondary Education	Upper Secondary Education	Non-university Tertiary Education	University- level Education	Total	
North America					
24	29	31	17	100	Canada
14	52	8	26	100	U.S.A
Asia & Pacific					
39	42	-	19	100	Korea, Rep. of
43	32	10	15	100	Australia
40	35	14	11	100	New Zealand
Europe					
29	63	2	6	100	Austria
47	30	13	11	100	Belgium
34	44	7	15	100	Denmark
33	46	9	12	100	Finland
40	41	9	10	100	France
19	60	9	13	100	Germany
50	28	12	11	100	Ireland
62	30	-	8	100	Italy
71	18	-	11	100	Luxembourg
37	40	-	23	100	Netherland
80	9	3	7	100	Portugal
70	13	5	13	100	Spain
26	47	14	13	100	Sweden
24	55	9	13	100	United Kingdom
OECD Other OECD Countries					
18	55	11	16	100	Norway
26	61	3	10	100	Poland
20	58	12	10	100	Switzerland

: OECD, OECD , 1998.

Source : OECD, *Education at a glance OECD Indicators*, 1998.

5-9. 25-64

(1996)

Distribution of the Labor Force 25 to 64 Years of Age by Level of Educational Attainment (1996)

: %

%

Below upper Secondary Education	Upper Secondary Education	Non-university Tertiary Education	University- level Education	Total	
North America					
18	29	33	20	100	Canada
11	52	9	28	100	U.S.A
Asia & Pacific					
38	41	-	21	100	Korea, Rep. of
37	35	11	17	100	Australia
35	38	15	13	100	New Zealand
Europe					
23	68	2	7	100	Austria
37	33	16	14	100	Belgium
29	47	8	17	100	Denmark
29	48	10	14	100	Finland
34	44	11	11	100	France
14	61	10	15	100	Germany
43	29	14	14	100	Ireland
54	34	-	11	100	Italy
63	21	-	16	100	Luxembourg
29	43	-	27	100	Netherland
76	11	4	9	100	Portugal
62	15	6	17	100	Spain
23	48	15	14	100	Sweden
19	57	10	15	100	United Kingdom
OECD Other OECD Countries					
15	56	12	17	100	Norway
21	64	4	12	100	Poland
17	58	14	10	100	Switzerland

: OECD, OECD , 1998.

Source : OECD, *Education at a glance OECD Indicators*, 1998.

5-10.

(1996)

: %

	Below Upper Secondary Education			Upper Secondary Education		
	15-19	20-24	25-29	15-19	20-24	25-29
North America						
	22.7	25.0	21.2	15.9	12.7	11.7
	21.3	19.1	16.2	11.2	9.6	7.1
Asia & Pacific						
	9.8	7.6	3.0	6.7	5.3	3.0
	22.6	19.8	12.0	16.5	10.1	7.1
	17.3	14.7	10.8	11.2	7.6	3.5
Europe						
	7.4	10.4	8.6	5.7	4.6	3.2
	22.9	29.7	18.9	27.3	19.1	11.0
	2.4	14.7	18.9	5.2	7.0	7.4
	24.9	39.5	28.5	36.0	23.8	17.0
	24.3	37.0	25.5	26.5	23.5	15.0
	6.8	15.4	17.4	8.4	8.4	7.5
	32.3	30.6	24.7	19.4	13.1	7.9
	33.1	29.1	16.8	45.9	36.8	17.7
	15.0	9.6	5.9	18.8	4.8	2.8
	18.9	11.8	8.6	8.8	6.6	4.5
	16.6	13.8	9.2	38.7	20.4	8.9
	50.3	37.0	31.7	51.7	40.7	24.8
	22.2	30.9	22.8	23.8	20.2	13.6
	31.4	28.0	21.7	14.9	11.6	9.5
OECD Other OECD Countries						
	18.9	16.1	10.5	14.3	9.7	6.2
	30.6	32.0	26.1	50.8	26.7	14.4
	8.8	9.6	6.7	33.9	27.2	11.8

: OECD, OECD

, 1998.

5-10. Unemployment Rates of Youth by Level of Educational Attainment and Age Group (1996)

%

Non-university Tertiary Education		University- level Education		All Level of Education			age
20-24	25-29	20-24	25-29	15-19	20-24	25-29	
11.5	8.8	9.0		20.1	13.6	10.4	Canada U.S.A
5.3	2.2	5.4	2.8	17.8	9.9	6.4	
-	-	7.7		7.5	5.9	3.3	Korea, Rep. of Australia New Zealand
8.2	5.9	6.7	4.2	20.4	11.9	8.0	
10.8	6.1	6.3	2.3	15.1	9.6	5.9	
14.2	4.4	3.9		6.8	5.7	4.2	Austria Belgium Denmark Finland France Germany Italy Luxembourg Netherlands Portugal Spain Sweden United Kingdom
9.7	4.7	6.5		25.3	20.0	10.7	
11.1	6.0	6.8	5.8	2.6	9.9	10.5	
20.5	12.2	17.2	6.3	29.0	26.7	17.0	
19.0	10.1	18.2	7.6	24.7	26.6	16.4	
7.2	4.9	-	14.4	7.3	9.6	8.4	
8.4	5.2	6.5	6.5	25.4	15.9	11.5	
-	-	4.9	4.9	36.1	33.1	18.3	
-	-	37.9	31.0	15.2	9.1	4.6	
-	-	14.9	0.6	16.9	8.8	6.0	
17.7	8.8	11.6	6.6	18.4	15.9	9.1	
36.8	24.9	25.6	9.0	50.8	39.2	29.3	
11.0	8.0	52.1	31.2	22.2	20.6	12.7	
8.0	2.9	10.9	5.1	17.9	12.8	9.3	
		11.3	4.9				
7.4	5.8	9.2		17.9	10.2	6.4	
26.0	8.8	5.2		44.2	27.1	14.5	
-	-	17.2	7.4	13.3	15.6	8.1	
		29.1	10.5				

 Source : OECD, *Education at a glance OECD Indicators*, 1998.

5-11.

(1996)

: %

	Below Upper Secondary Education			Upper Secondary Education		
	15-19	20-24	25-29	15-19	20-24	25-29
North America						
	31.5	49.7	53.9	52.8	65.0	72.4
	26.9	48.6	57.8	55.6	69.2	77.9
Asia & Pacific						
	3.5	66.3	65.7	29.9	55.3	64.0
	40.1	62.8	64.0	62.6	74.9	80.2
	40.4	60.7	61.8	58.8	78.2	81.9
Europe						
	34.8	60.5	69.8	65.4	70.1	82.3
	3.5	45.8	65.2	11.4	38.8	78.8
	57.5	65.9	63.2	70.9	78.1	83.0
	12.8	35.0	55.0	30.2	44.8	67.1
	5.1	41.4	59.1	6.4	36.8	74.7
	26.1	54.2	55.3	64.5	68.9	75.4
	9.4	56.2	57.8	31.0	54.4	80.1
	11.9	47.8	58.3	12.2	26.3	53.4
	13.0	69.4	75.0	6.0	30.3	77.9
	40.0	68.4	68.7	56.8	76.5	85.6
	19.9	68.9	78.8	9.4	28.0	69.7
	15.8	52.5	54.7	5.6	22.6	61.3
	23.1	43.4	58.7	39.2	56.2	75.0
	33.5	47.6	49.7	56.2	68.3	75.5
OECD Other OECD Countries						
	31.2	57.7	66.9	52.6	67.3	79.3
	4.6	43.5	53.4	30.5	49.9	71.0
	14.5	42.5	61.8	49.9	74.5	82.3
	34.8	49.5	53.2	24.6	37.1	64.7

: OECD, OECD

, 1998.

5-11. Employment/Population Rate of Youth by Level of Educational Attainment and Age Group (1996)

%

Non-university Tertiary Education		University-level Education		All Level of Education			age	
20-24	25-29	20-24	25-29	15-19	20-24	25-29		
71.9	80.8	71.3	84.1	37.8	65.2	75.2	Canada U.S.A	
80.0	85.3	84.3	87.8	33.2	68.5	78.6		
-	-	76.8	76.4	10.3	59.1	67.9	Korea, Rep. of Australia New Zealand	
81.2	80.6	83.0	87.8	46.6	73.2	75.7		
78.4	74.6	75.7	91.4	46.8	72.0	75.0		
75.2	88.8	52.8	80.1	41.0	68.3	80.2	Austria Belgium Denmark Finland France Germany Ireland Italy Luxembourg Netherland Portugal Spain Sweden United Kingdom	
73.9	90.8	55.7	87.9	5.2	45.4	78.9		
82.4	87.8	69.2	84.6	56.8	71.7	75.7		
66.0	74.4	63.2	82.1	15.8	43.7	67.6		
39.5	81.7	26.6	67.7	5.3	37.5	71.2		
79.3	88.5	82.2	82.1	28.7	65.7	74.0		
77.6	88.6	67.1	85.7	15.6	59.9	75.4		
-	-	38.3	52.5	12.0	34.4	55.6		
-	-	41.7	84.5	12.3	57.5	76.6		
-	-	65.6	86.0	42.7	72.4	81.2		
51.0	83.4	62.7	83.3	18.6	52.4	77.6		
48.6	68.4	20.5	54.3	12.0	36.4	57.5		
45.9	73.8	62.7	84.6	22.2	53.1	73.7		
77.4	89.5	74.1	88.1	51.0	67.3	75.3		
57.3	69.6	60.9	81.3	34.5	64.4	77.3		Norway Poland Switzerland Turkey
62.0	78.8	72.7	86.6	9.4	49.8	70.9		
83.2	90.8	43.3	68.9	16.7	67.4	79.4		
-	-	51.5	80.2	33.0	45.9	57.0		

Source : OECD, *Education at a glance OECD Indicators*, 1998.

5-12. (1994) Human Development Index(1994)

: , %

Age, %

Life expectancy at Birth	Adult Literacy Rate	Gross enrollment Rate	HDI	
North America				
79.0	99.0	100	0.960	Canada
76.2	99.0	96	0.942	U.S.A
Asia & Pacific				
71.5	97.9	82	0.890	Korea, Rep. of
79.8	99.0	78	0.940	Japan
78.1	99.0	79	0.931	Australia
76.4	99.0	94	0.937	New Zealand
Europe				
76.6	99.0	87	0.932	Austria
76.8	99.0	86	0.932	Belgium
75.2	99.0	89	0.927	Denmark
78.7	99.0	89	0.946	France
76.3	99.0	81	0.924	Germany
76.3	99.0	88	0.929	Ireland
75.9	99.0	58	0.899	Luxembourg
77.3	99.0	91	0.940	Netherland
74.6	89.6	81	0.890	Portugal
77.6	97.1	90	0.934	Spain
78.3	99.0	82	0.936	Sweden
76.7	99.0	86	0.931	United Kingdom
OECD Other OECD Countries				
77.5	99.0	92	0.943	Norway
78.1	99.0	76	0.930	Switzerland

: , , 1998.

Source : National Statistical Office,
International Statistics Yearbook, 1998.
UNDP, *Human Development Report*, 1997.