

:
:

1999

가

가

1998 12

【 】

I.

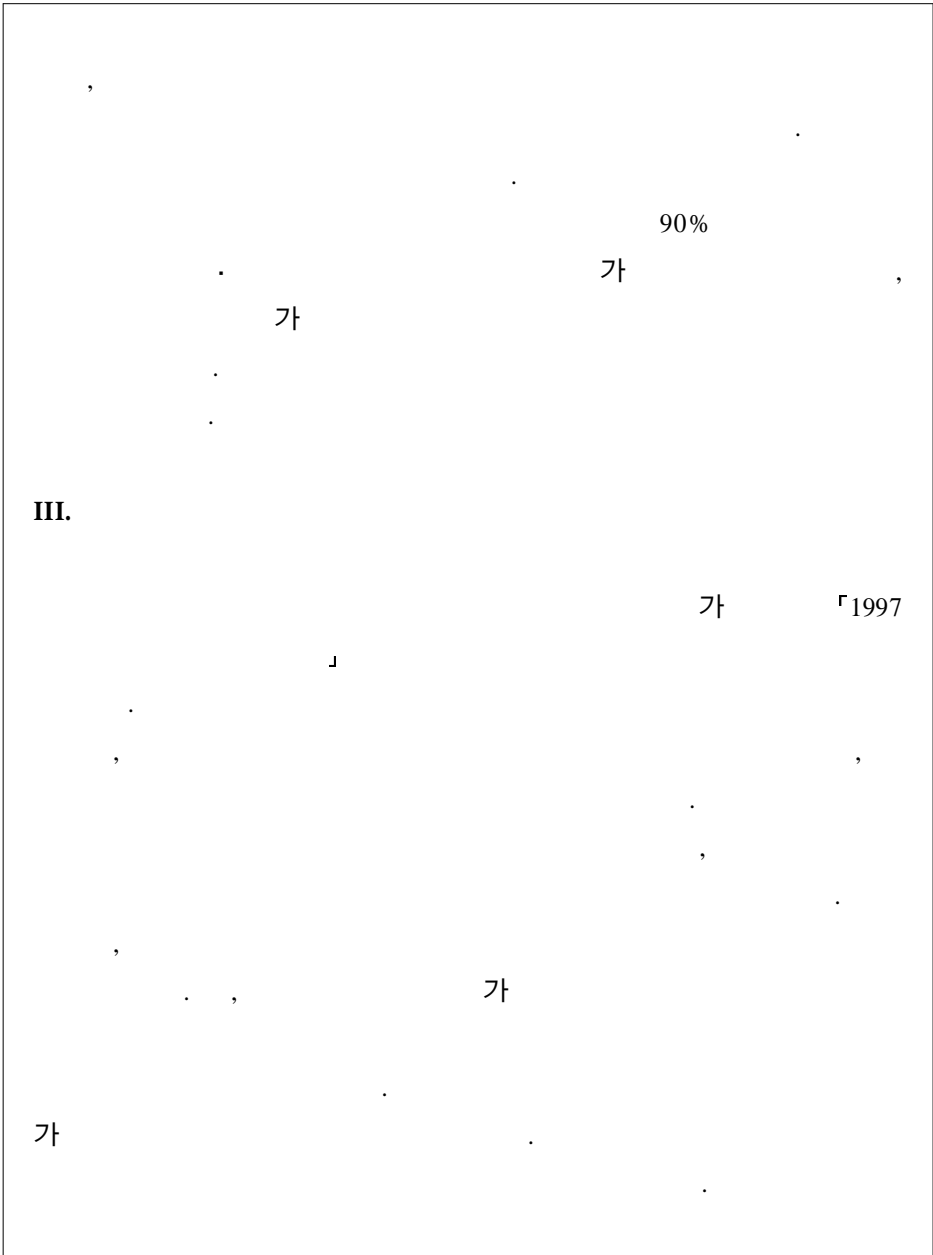
가

1999

가

II.

가 가
8
0 100% , 70 90%
()
8 가 가



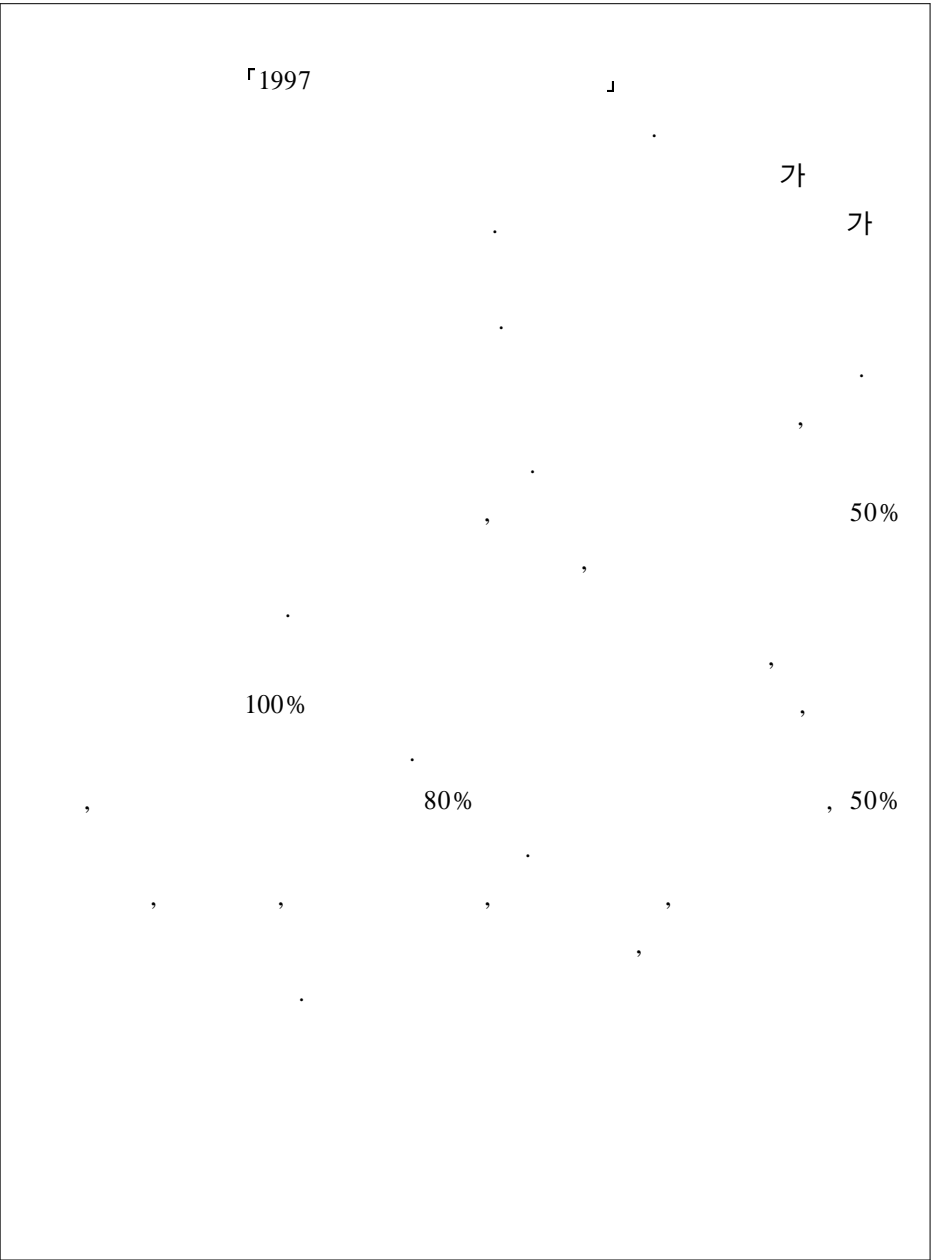
가 ,
가 가 .
가
가 .
가 .

IV.

1.

, .
가 .
가 .
가
가
가
가
가
가
가
가
가
가

, . 가
가 , 가
가 , 가
2. 가
가 , 가
가 , 가



I.	1
-----------	-------	----------

.	6
---	-------	----------

1.	6
----	-------	---

가.	6
----	-------	---

.	8
---	-------	---

.	9
---	-------	---

.	10
---	-------	----

.	12
---	-------	----

.	13
---	-------	----

.	14
---	-------	----

2.	14
----	-------	----

3.	17
----	-------	----

4.	22
----	-------	----

III.	25
-------------	-------	-----------

1.	25
----	-------	----

2.	29
----	-------	----

가.	29
----	-------	----

.	31
---	-------	----

.	36
3.	41
가.	41
.	42
.	44
.	46
.	47
.	48
.	48
4.	49
가.	50
.	54
.	60
5.	62
가.	62
.	65
6.	69
.	76
1.	76
가.	76
.	77
.	가 79
2.	81
가.	81
.	82
.	84

.	85
1)	85
2)	87
3)	88
4)	88
5)	89
.	91
1)	91
2)	92
3)	94
4)	96
.	98

1.	98
2.	98
3.	100
가.	101
.	107
1) '98	107
2)	107
3)	108
.	116
.	125
1)	125
2)	126

.	133
	136
ABSTRACT	137
	143
1.	144
2.	147
3.	151
4. 1997	()	174

< II-1> 1997	7
< II-2> N	19
< II-3> N	가	
	20
< II-4>	24
< III-1>	27
< III-2>	28
< III-3>	29
< III-4>	30
< III-5>	32
< III-6>	33
< III-7>	34
< III-8>	35
< III-9>	36
< III-10>	39
< III-11>	40
< III-12>	42
< III-13>	43
< III-14>	44
< III-15>	46
< III-16>	47
< III-17>	48
< III-18>	48

< III-19>	50
< III-20>	(,)	52
< III-21>	. (,)	53
< III-22>	55
< III-23>	. ()	55
< III-24>	56
< III-25>	57
< III-26>	58
< III-27>	59
< III-28>	60
< III-29>	61
< III-30>	62
< III-31>	63
< III-32>	64
< III-33>	65
< III-34>	66
< III-35>	66
< III-36>	67
< III-37>	68
< III-38>	69
< III-39>	71
< III-40>	72
< III-41>	73
< III-42>	74
< III-43>	75
< IV-1>	85
< IV-2>	87

< IV-3>	91
< IV-4>	()	93
< IV-5>	()	96
< -1>	.	102
< -2>	가	103
< -3>	.	104
< -4>	가	105
< -5>	가	106
< -6> '98		109
< -7> '98	(1)	110
< -8> '98	(2)	111
< -9> ± 5%	(1)	112
< -10> ± 5%	(2)	113
< -11> ± 10%	(1)	114
< -12> ± 10%	(2)	115
< -13>	± 5%	117
	(1)	117
< -14>	± 5%	118
	(2)	118
< -15>	± 5%	119
	(1)	119
< -16>	± 5%	120
	(2)	120
< -17>	± 10 %	121
		121
< -18>	± 10 %	

	123
< -19>	± 10 %	
	(2)	124
< -20> ± 5%	,	
	(1) (1)	127
< -21> ± 5%	,	
	(1) (2)	128
< -22> ± 5%	,	
	(1) (3)	129
< -23> ± 5%	,	
	(1 가) (1)	130
< -24> ± 5%	,	
	(1 가) (2)	131
< -25> ± 5%	,	
	(1 가) (3)	132
< II-1>	16
< II-2>	21

I.

가 IMF

. 가 .
, . .
. 가 21 . .
.

. 가
. 가
80 . ' - ' .
. 가 ' 가
. 가 가

(employability)

가 .

가

가 가

가

가

가

(1)

6

가

가 ,

1998 2 「1997」

638

201

가

가 가

가

가 5%

•

1.

가.

1976

1,000 6

,

(6 700 1)

,

< II-1 >

(,), (가 , ,), (,), , 6

.

가 ,
가 가 (

4 1997

).

< II-1> 1997

	1 (700)			2) (40)		
	()	(%)	()	()	(%)	()
	2,545	100.0	3,636	296	100.0	7,400
	1,081	42.5	1,544	153	51.7	3,825
	188	7.4	269	19	6.4	475
	164	6.4	234			
	24	0.9	34			
	248	9.7	354	8	2.7	200
가	169	6.6	241			
	40	1.6	57			
	39	1.5	56			
	314	12.3	449	25	8.4	625
	248	9.7	354			
	66	2.6	94			
	714	28.1	1,020	91	30.7	2,275

: 1) 6 700 1

2) 15 40 1

: 『1997 』, 1996.12

× () , ()
 50% 가 (× × 150/ 100)

가

가

가

x

가

x

1/2,

80%()

100%()

120%

가

180%

× × ,
 70%() 90% ,
 「2+1」 ()
 가
 가
 가
 가
 가
 70%() 90%()
 1 100 () 150
 가 ()

가 . 1
 . 1 100,000
 , 50
 , 가 1
 가
 가 가 가
 , 1 400 () 600 70%() 90%
 , 가
 가

1997 12

가

가 .

가

1998 1 21

가 , , .

, , .

1 , 1

20%

50%

(, 1 1 , 1) , 1 (,)

1 .

가

, , , , ,

, 가 , ,

, 가 , ,

,

가 , ,

가 가 가

,

7 (1/2(1/3))

.

가
6 가

1/3() 1/2

,

,

1/3()

1/2

, , , , 가

가 , , 가

가 (1998 86 75%) , 25% 6 가

2.

가

,

』

,

,

6

,

.

.

(

,

,

,

)

.

.

가

,

.

가

,

가

.

,

< II-1 >

.

가

『

100%

8

가

3.

가 (,)
,

가

가

8

가

가

가

가 .

N

가 .

. < II-2> N

1997

1998

가

, < II-3>

가 . < II-3>

< II-2> .

가 가 . < II-1> ,
 3,636 2,616
 , 7,400
 5,275 . N
 3 , 12 1
 3,100 .
 < II-2> N

				()	()	()
K-T PMW	4	32	30	480	500	184
HA	4	32	40	420	450	184
	4	32	40	390	410	184
IM	5	36	40	480	490	207
	5	36	40	950	950	207
IM	5	36	40	480	490	207
	5	40	30	390	500	230
Visual Basic	5	40	30	390	400	230
SQL Windows	5	40	30	390	400	230
	5	40	40	360	410	230
K-T APEX	5	40	40	520	540	230
HA	6	50	40	1900	2000	287
	8	53	40	1400	1400	304
WSTC	9	60	40	1600	1600	344
	10	65	40	1700	1700	373
	11	75	40	1900	1900	430
K-T LTP	12	95	40	3100	3100	545

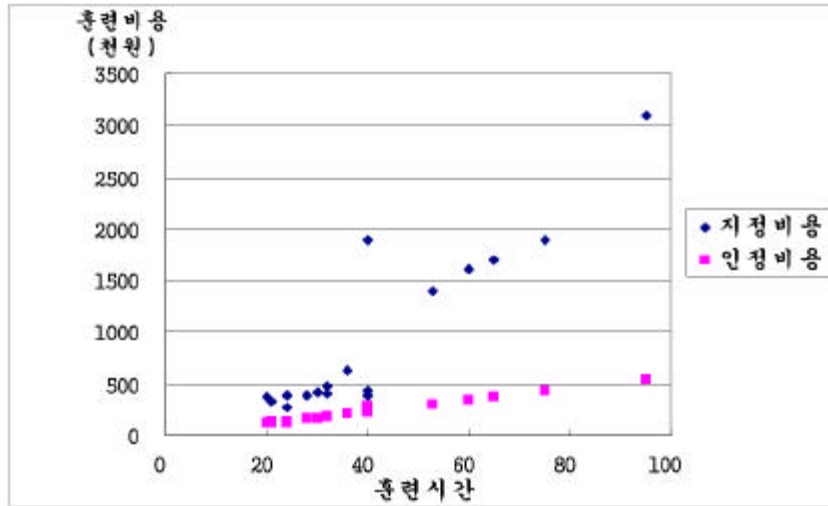
: , , 1997,
 , 1998 , 1997.12.27.

< II-3> N

가

						()	()	()	가 ()	가 ()
2	3	20	30		20	370	330	115	18,500	5,750
6	3	20	40		20	370	382	115	18,500	5,750
2	3	21	30		21	330	360	121	15,714	5,762
5	3	21	40		21	332	366	129	15,810	6,143
1	3	21	50		21	330	360	121	15,714	5,762
2	3	24	30		24	270	325	127	11,250	5,271
39	3	24	40		24	388	388	138	16,154	5,750
2	4	28	40		28	390	405	161	13,929	5,750
2	4	30	30		30	420	440	172	14,000	5,733
1	4	30	40		30	420	420	172	14,000	5,733
1	4	32	30		32	480	500	184	15,000	5,750
2	4	32	40		32	405	430	184	12,656	5,750
3	5	36	40		36	637	643	207	17,685	5,750
3	5	40	30		40	390	433	230	9,750	5,750
2	5	40	40		40	440	475	230	11,000	5,750
1	6	40	40		40	1900	2000	287	47,500	7,175
1	8	53	40		53	1400	1400	304	26,415	5,736
1	9	60	40		60	1600	1600	344	26,667	5,733
1	10	65	40		65	1700	1700	373	26,154	5,738
1	11	75	40		75	1900	1900	430	25,333	5,733
1	12	95	40		95	3100	3100	545	32,632	5,737
79		38				837	855	223	21,774	5,810

:



< -2>

가

1998

86

167

5

80-120

가

III.

1.

『1997

』 . , , , , ,

, , . , , ,

가

638

1998 2

25

. , , , , ,

, , , , ,

가 , 가 , 가 .

가

가

. .

가 가

.

.

(, , ,) , ,

, (

).

· , ,

·

,

,

10

가

가

(3).

638

201

31.5% .

,

가

가 , ,
 가 .
 59 29.4% ,
 37.8% , 18.9% 13.9%
 가
 가

< III-1>

(: , %)

		638	201	31.5	100
		95	59	62.1	29.4
	¹⁾	50	37	74.0	18.4
		8	8	100	4.0
		37	14	37.8	7.0
		241	76	31.5	37.8
		123	38	30.9	18.9
		179	28	15.6	13.9
		154	25	16.2	12.4
		25	3	12.0	1.5

: 1)

: , 「1997 」

< III-2> ,

()

,

,

< III- 2>

(: , %)

¹⁾	457	31.7	38	6.3	495	24.2
	720	49.9	13	2.2	733	35.9
	124	8.6	53	8.8	177	8.7
	-	-	493	82.3	493	24.1
	-	-	2	0.3	2	0.1
	68	4.7	-	-	68	3.3
	74	5.1	-	-	74	3.6
	1,443	100.0	599		2,042	100.0

1 ,

가

< III-3>

(: , , , /)

					1	
	26	7,797	32	384	24	22
	53	3,249	71	338	52	11
	24	2,257	38	284	24	9
	10	4,444	25	408	10	18
	1	44,880	2	3,037	1	7
	5	10,749	7	531	5	21
	8	4,105	11	456	8	7
	127	4,764	186	388	124	13

2.

가.

가

가

< III-4>

가 가

가

< III-4>

(: , %, ,)

					(.)	()		()
	485	33.6	1,165	60	60,536	290,819	466	4,858
	27	1.9	969	46	29,075	10,157	27	349
	756	52.4	47	111	4,877	42,084	756	8,630
	9	0.6	469	81	23,721	209,088	9	8,814
	166	11.5	188	91	9,546	119,003	167	12,467
	1,443	100	459	90	24,692	132,899	1,424	5,539

(.) 가 ,

1

가 291

209

10

가

(
100%
)
,
가 . < III-4>
가
(missing value)
.
.
< III-5>
가 가
,
가
.
,
.
131
, 1 1
.
가 , 가 4,853 4,609 9,534 ,
3,025 , 가
434 .
가 가 , 가 ?
가 가 ,
.

(< III-4 >),

가

가 가 , 가

< III-5 >

(: , %, ,)

				(.)	()		()
	457	512	36	25,242	119,270	444	4,853
	720	204	131	13,981	133,303	720	9,534
	124	865	115	57,788	174,807	124	3,025
	68	1,100	54	68,805	285,348	62	4,609
	74	1,345	22	29,504	12,791	74	434
	1,443	459	90	24,692	132,899	1,424	5,539

가

(1)

가

< III-6>

가

< III-6>

(: ,)

	442	4,854	2	286
	703	9,550	17	9,244
	124	3,025	-	-
	62	4,609	-	-
	74	434	-	-
	1,405	-	19	-

10 (2 × 5)

< III-7> 7가

< III-7>

가

가

가

< III-7>

(: , %, ,)

				(.)	()		()
	468	1,184	59	61,614	291,024	449	4,774
	17	649	72	30,874	285,395	17	9,244
	27	969	46	29,075	10,157	27	349
	754	47	111	4,887	42,195	754	8,634
	2	40	25	980	280	2	286
	9	469	81	23,721	209,088	9	8,814
	166	188	91	9,546	119,003	166	12,467
	1,443	459	90	24,692	132,899	1,424	5,539

가

가

<

III-8>

가 ,

,

,

,

가

,

가

가

.

가

.

.

,

.

< III-8>

(: ,)

		146	132	91	40	57	466
		5,094	8,148	2,936	4,692	503	4,858
		9		1		17	27
		583		1,353		217	349
		288	424	31	13		756
		1,161	10,295	4,674	3,916		8,630
		1	8				9
		3,669	8,879				8,814
			156	1	9		166
			13,415	714	1,457		12,467
		444	720	124	62	74	1,424
		4,853	9,534	3,025	4,609	434	5,539

<

III-9>

가

가

< III-9>

(: ,)

		146	-	9	286	2	1	-	444
		5,094	-	583	1,165	286	3,669	-	4,853
		115	17	-	424	-	8	156	720
		8,033	9,244	-	10,295	-	8,879	13,415	9,534
		91	-	1	31	-	-	1	124
		2,936	-	1,353	4,674	-	-	714	3,025
		40	-	-	13	-	-	9	62
		4,692	-	-	3,916	-	-	1,457	4,609
		57	-	17	-	-	-	-	74
		503	-	217	-	-	-	-	434
		449	17	27	754	2	9	166	1,424
		4,774	9,244	349	8,634	286	8,814	12,467	5,539

가

가

가

가

가

가

가

. 가

가

23

가

(tecnician),

(7),

(8),

(9)

가

가

(

)

가

「

(

)」가

가

가

가

가

()

< III-10 >

가
가

1

13

8,858

2,025

가
가

가

가
가

가

가

< III-10>

(: , ,)

				(.)	()		()
1	4	322	41	11,871	56,202	4	4,734
2	30	794	95	26,004	99,955	30	3,844
3 ,	10	653	87	39,652	351,243	10	8,858
4	50	420	27	16,619	85,109	50	5,121
5 .	414	635	72	32,927	171,371	402	5,473
6	92	897	48	34,212	160,324	91	4,678
7	112	537	44	30,267	136,134	110	4,585
8	66	608	64	31,033	146,259	66	4,713
9 .	261	239	73	16,269	118,471	260	7,473
10	10	473	48	24,369	178,199	10	7,312
11	19	1,115	74	71,887	294,356	18	3,993
12	20	962	30	34,065	138,731	18	4,319
13	37	941	34	25,839	52,321	37	2,025
14	316	68	184	12,183	87,882	316	7,213
15 .	1	24	20	480	3,193	1	6,652
16	-	-	-	-	-	-	-
17	1	24	585	14,040	58,244	1	4,148
	1,443	459	90	24,692	132,899	1,424	5,539

< III-11>

가 . 3 , 9
 , 10 , 14 , 15
 , 2 ,
 11 13

가 , 가

< III-11 >

(: ,)

1	-	-	3	7,656	1	1,050	-	-	-	-	4	4,734
2	2	3,632	15	6,172	1	2,502	-	-	12	278	30	3,844
3 ,	-	-	8	10,480	-	-	1	2,117	1	57	10	8,858
4	20	4,907	25	6,590	4	4,013	1	4,790	-	-	50	5,121
5 .	157	5,164	166	9,274	37	2,851	28	4,689	14	563	402	5,473
6	27	5,008	33	8,231	6	4,008	2	3,402	23	416	91	4,678
7	46	5,108	43	5,537	4	3,588	13	3,782	4	466	110	4,585
8	37	5,152	23	5,146	1	746	4	3,687	1	78	66	4,713
9 .	92	2,724	136	16,283	21	2,969	11	5,426	-	-	260	7,473
10	6	5,725	4	9,753	-	-	-	-	-	-	10	7,312
11	10	5,982	-	-	7	3,447	-	-	1	773	18	3,993
12	11	5,551	3	12,247	1	1,009	-	-	3	382	18	4,319
13	1	3,632	3	3,576	18	2,363	-	-	15	421	37	2,025
14	35	3,389	256	11,338	23	4,318	2	700	-	-	316	7,213
15 .	-	-	1	6,652	-	-	-	-	-	-	1	6,652
17	-	-	1	4,148	-	-	-	-	-	-	1	4,148
	444	4,853	720	9,534	124	3,025	62	4,609	74	434	1,424	5,539

3.

가 가

가.

< III-12 >

60

(program)

5,539

8,388

가 .

< III-12>

(: , , ,)

	38	54	26	2,770
	13	49	98	11,509
	53	35	191	9,050
	493	40	107	8,292
	2	980	29	11,224
	599	44	109	8,388

< III-13>

가 가 ,

가

< III-14>

< III-13>

(: , , ,)

5	27	138	31	10,105
6	1	24	78	16,332
7	4	37	24	10,624
8	3	24	18	1,182
9	75	43	38	10,527
11	1	44	40	11,806
14	456	33	123	7,877
15	25	142	192	9,308
17	7	33	49	19,577
	599	44	109	8,388

가

< III-14>

< III-14>

가

< III-14 >

(: ,)

5		13	-	-	13	1	27
		100	-	-	39	1928	138
6		-	-	-	1	-	1
		-	-	-	24	-	24
7		2	-	-	2	-	4
		24	-	-	50	-	37
8		3	-	-	-	-	3
		24	-	-	-	-	24
9		17	10	1	46	1	75
		33	54	24	45	32	43
11		-	-	-	1	-	1
		-	-	-	44	-	44
14		3	3	52	398	-	456
		24	29	35	33	-	33
15		-	-	-	25	-	25
		-	-	-	142	-	142
17		-	-	-	7	-	7
		-	-	-	33	-	33
		38	13	53	493	2	599
		54	49	35	40	980	44

가 ()
가 ()

< III-15 >

1

가

가

가

< III-15>

(: %,)

5		100	-	-	75.1	100	80.8
		3,380	-	-	10,563	11,382	10,105
6		-	-	-	65	-	65
		-	-	-	16,332	-	16,332
7		100	-	-	40	-	57.1
		3,345	-	-	13,314	-	10,624
8		100	-	-	-	-	100
		1,182	-	-	-	-	1,182
9		93.4	61.1	22.7	43.9	82.5	48.6
		2,620	18,298	11,000	10,920	4,292	10,527
11		-	-	-	100	-	100
		-	-	-	11,806	-	11,806
14		91.8	83.7	95.8	81.7	-	84
		2,271	9,027	9,044	7,708	-	7,877
15		-	-	-	88.3	-	88.3
		-	-	-	9,308	-	9,308
17		-	-	-	79.1	-	79.1
		-	-	-	19,577	-	19,577
		95	78.7	94.8	79.2	89.1	81.6
		2,770	11,509	9,050	8,292	11,224	8,388

. < III-16>

가 , 가
 가 .

< III-16>

(: %, ,)

3	421	80.6	27	112	424	9,641
1	104	74.8	32	70	104	9,392
1	50	90.2	73	143	51	5,878
1	15	94.3	256	151	15	8,467
3	5	134.2	790	114	5	8,009
	595	81.6	44	109	599	8,388

.

.

. < III-17>

가 . ,

< III-17>

(: , ,)

20	122	47	43	12,892
21 35	315	34	66	11,653
36 50	108	49	113	8,470
51	54	85	498	6,674
	599	44	109	8,388

.

< III-18>

가

가

가

< III-18>

(: , , ,)

	129	54	177	8,457
	470	41	90	8,369
	599	44	109	8,388

.

가 ,

가 ,

가 . ,

가 가 , 가 가

4.

, 가 ,

, 1 10
().

가.

< III-19>

2,799

849 , 1,059 ,

315 , 265 , 294

1.3 6

가

< III-19>

(:)

	279,879,101	84,859,568	105,685,976	26,455,352	29,433,562	613,417	31,511,051	1,320,175
1	128,098,657	51,715,300	31,269,696	12,586,036	17,058,716	302,987	14,371,303	794,619
2	5,486,850	234,336	2,160,609	766,449	2,149,653	7,144	156,882	11,777
3	11,524,972	3,385,522	4,590,738	1,674,038	435,614	19,576	1,144,053	275,431
4 가	36,836,336	18,842,121	6,574,216	1,564,568	1,635,809	4,105	8,176,449	39,068
5	10,460,478	1,545,218	6,604,349	1,213,171	472,666	20,571	603,013	1,490
6	4,005,875	1,249,803	1,233,162	570,801	344,861	10,551	566,459	30,238
7	45,779,599	6,008,907	25,416,672	4,926,153	5,577,812	216,088	3,519,108	114,859
8	1,392,628	73,920	367,291	350,369	44,825	109	549,052	7,062
9	15,443,134	1,719,024	7,090,198	2,443,739	1,713,606	32,286	2,424,732	19,549
10	20,850,572	85,417	20,379,045	360,028	-	-	-	26,082
1 8	243,585,395	83,055,127	78,216,733	23,651,585	27,719,956	581,131	29,086,319	1,274,544

< III-20>

가 45.8% 가

가 가 16.4% 13.2%
5.5% 7.4% 88.3%

가 19.3%

5.9%
2%, 1.5% 가

가

) 가

(
가

가

가

가

가

가

< III-20>

(,)

	1.000	1.000	1.000	1.000	1.000	1.000	1.000	1.000
1	0.458	0.609	0.296	0.476	0.580	0.494	0.456	0.602
2	0.020	0.003	0.020	0.029	0.073	0.012	0.005	0.009
3	0.041	0.040	0.043	0.063	0.015	0.032	0.036	0.209
4 가	0.132	0.222	0.062	0.059	0.056	0.007	0.259	0.030
5	0.037	0.018	0.062	0.046	0.016	0.034	0.019	0.001
6	0.014	0.015	0.012	0.022	0.012	0.017	0.018	0.023
7	0.164	0.071	0.240	0.186	0.190	0.352	0.112	0.087
8	0.005	0.001	0.003	0.013	0.002	0.000	0.017	0.005
9	0.055	0.020	0.067	0.092	0.058	0.053	0.077	0.015
10	0.074	0.001	0.193	0.014	-	-	-	0.020

가

<

III-21>

50 60%

가

가

22.7% 28.1%

3-8%

12.1%

7.2%,

20-37%

, 1 (<
III-3>).

가
가
가
가
가
가

< III-21> (,)

	1.000	1.000	1.000	1.000	1.000	1.000	1.000	1.000
1	0.526	0.623	0.400	0.532	0.615	0.521	0.494	0.623
2	0.023	0.003	0.028	0.032	0.078	0.012	0.005	0.009
3	0.047	0.041	0.059	0.071	0.016	0.034	0.039	0.216
4 가	0.151	0.227	0.084	0.066	0.059	0.007	0.281	0.031
5	0.043	0.019	0.084	0.051	0.017	0.035	0.021	0.001
6	0.016	0.015	0.016	0.024	0.012	0.018	0.019	0.024
7	0.188	0.072	0.325	0.208	0.201	0.372	0.121	0.090
8	0.006	0.001	0.005	0.015	0.002	0.000	0.019	0.006

가
가
가

가

가

가

< III-22>

< III-23>

< III-24>

가

< III-20>

< III-23>

가

가

가

가

가

가

가

< III-22>

(:)

	147	35	57	34	8	13
	181,753,520	81,383,860	47,014,863	20,728,743	31,339,741	1,286,313
1	90,425,896	50,165,512	15,663,320	9,521,652	14,293,351	782,061
2	1,060,650	191,163	301,493	404,002	152,215	11,777
3	7,908,561	3,137,385	1,778,676	1,596,618	1,134,770	261,112
4 가	29,406,602	17,989,055	1,929,289	1,313,049	8,136,141	39,068
5	5,857,264	1,367,809	3,108,562	778,986	600,417	1,490
6	2,643,941	1,162,950	475,232	413,499	562,022	30,238
7	17,925,274	5,587,475	4,544,660	4,178,789	3,506,421	107,929
8	1,328,300	73,786	348,106	350,294	549,052	7,062
9	9,758,226	1,640,770	3,880,729	1,811,826	2,405,352	19,549
10	15,414,197	67,955	14,960,187	360,028	-	26,027
1 8	156,556,488	79,675,135	28,149,338	18,556,889	28,934,389	1,240,737

< III-23>

()

	1.000	1.000	1.000	1.000	1.000	1.000
1	0.498	0.616	0.333	0.459	0.456	0.608
2	0.006	0.002	0.006	0.019	0.005	0.009
3	0.044	0.039	0.038	0.077	0.036	0.203
4 가	0.162	0.221	0.041	0.063	0.260	0.030
5	0.032	0.017	0.066	0.038	0.019	0.001
6	0.015	0.014	0.010	0.020	0.018	0.024
7	0.099	0.069	0.097	0.202	0.112	0.084
8	0.007	0.001	0.007	0.017	0.018	0.005
9	0.054	0.020	0.083	0.087	0.077	0.015
10	0.085	0.001	0.318	0.017	-	0.020

< III-24>

()

	1.000	1.000	1.000	1.000	1.000	1.000
1	0.578	0.630	0.556	0.513	0.494	0.630
2	0.007	0.002	0.011	0.022	0.005	0.009
3	0.051	0.039	0.063	0.086	0.039	0.210
4 가	0.188	0.226	0.069	0.071	0.281	0.031
5	0.037	0.017	0.110	0.042	0.021	0.001
6	0.017	0.015	0.017	0.022	0.019	0.024
7	0.114	0.070	0.161	0.225	0.121	0.087
8	0.008	0.001	0.012	0.019	0.019	0.006

< III-25>

,
가
, 가
III-8>
(583),
가 , 가
가
.

< III-25>

(:)

	14		11		1		2	
	206,499	1.000	153,295	1.000	19,342	1.000	33,862	1.000
1	78,425	0.380	56,567	0.369	9,300	0.481	12,558	0.371
2	4,863	0.024	865	0.006	3,998	0.207		
3	38,803	0.188	24,484	0.160			14,319	0.423
4 가	4,919	0.024	4,919	0.032				
5	6,385	0.031	4,885	0.032	1,500	0.078		
6	24,731	0.120	24,229	0.158	502	0.026		
7	48,291	0.234	37,319	0.243	4,042	0.209	6,930	0.205
8	27	0.000	27	0.000				
9								
10	55	0.000					55	0.002
1 8	206,444		153,295		19,342		33,807	

< III-26>

가 ,

가

가

가가

(< III-8>)

< III-26 >

(:)

	78		24		45		5		4	
	28,564,126	1.000	1,085,161	1.000	24,073,257	1.000	3,368,712	1.000	36,996	1.000
1	8,828,118	0.309	274,620	0.253	6,722,973	0.279	1,809,891	0.537	20,634	0.558
2	1,002,952	0.035	40,671	0.037	796,344	0.033	162,193	0.048	3,744	0.101
3	1,494,218	0.052	202,155	0.186	1,232,256	0.051	58,894	0.017	913	0.025
4 가	2,436,354	0.085	83,688	0.077	2,182,396	0.091	165,400	0.049	4,870	0.132
5	1,807,681	0.063	123,895	0.114	1,309,692	0.054	373,309	0.111	785	0.021
6	362,856	0.013	39,395	0.036	215,201	0.009	108,067	0.032	193	0.005
7	7,947,571	0.278	295,263	0.272	7,213,678	0.300	434,625	0.129	4,005	0.108
8	5,655	0.000	107	0.000	5,473	0.000	75	0.000	-	-
9	1,552,585	0.054	7,905	0.007	1,286,570	0.053	256,258	0.076	1,852	0.050
10	3,126,136	0.109	17,462	0.016	3,108,674	0.129	-	-	-	-
1 8	23,885,405	-	1,059,794	-	19,678,013	-	3,112,454	-	35,144	-

< III-27 >

가

< III-27>

(:)

	20		18		1		1	
	17,170,614	1.000	17,013,801	1.000	22,499	1.000	134,314	1.000
1	3,778,694	0.220	3,706,519	0.218	14,857	0.660	57,318	0.427
2	471,468	0.027	469,904	0.028	641	0.028	923	0.007
3	1,459,554	0.085	1,448,710	0.085	2,474	0.110	8,370	0.062
4 가	1,112,681	0.065	1,077,243	0.063	-	-	35,438	0.264
5	1,403,335	0.082	1,399,025	0.082	2,499	0.111	1,811	0.013
6	157,088	0.009	152,375	0.009	469	0.021	4,244	0.032
7	6,770,155	0.394	6,759,914	0.397	1,559	0.069	8,682	0.065
8	-	-	-	-	-	-	-	-
9	611,980	0.036	594,452	0.035	-	-	17,528	0.131
10	1,405,659	0.082	1,405,659	0.083	-	-	-	-
1 8	15,152,975	-	15,013,690	-	22,499	-	116,786	-

< III-28>

가

< III-28>

(:)

	11		2		9	
	2,096,707	1.000	26,267	1.000	2,070,440	1.000
1	722,459	0.345	4,046	0.154	718,413	0.347
2	34,099	0.016	-	-	34,099	0.016
3	36,729	0.018	-	-	36,729	0.018
4 가	31,938	0.015	-	-	31,938	0.015
5	202,128	0.096	-	-	202,128	0.098
6	22,367	0.011	-	-	22,367	0.011
7	211,115	0.101	22,221	0.846	188,894	0.091
8	-	-	-	-	-	-
9	139,807	0.067	-	-	139,807	0.068
10	696,065	0.332	-	-	696,065	0.336

< III-29>

< III-30>

III-12>

80%

가

가 , , 가 , ,
 가 , ,
 가 .

< III-29 >

(:)

	44	9	8	2	22	3
	49,670,702	1,769,443	15,538,224	2,316,056	29,433,562	613,417
1	24,265,065	1,214,555	4,458,471	1,230,336	17,058,716	302,987
2	2,912,818	1,637	558,769	195,615	2,149,653	7,144
3	587,107	21,498	94,367	16,052	435,614	19,576
4 가	3,402,300	322,917	1,353,350	86,119	1,635,809	4,105
5	1,183,685	48,629	584,942	56,877	472,666	20,571
6	794,892	23,229	367,987	48,264	344,861	10,551
7	12,877,193	66,629	6,709,526	307,138	5,577,812	216,088
8	58,646	-	13,712	-	44,825	109
9	3,380,536	70,349	1,188,640	375,655	1,713,606	32,286
10	208,460	-	208,460	-	-	-

< III-30>

	44	9	8	2	22	3
	1.000	1.000	1.000	1.000	1.000	1.000
1	0.489	0.686	0.287	0.531	0.580	0.494
2	0.059	0.001	0.036	0.084	0.073	0.012
3	0.012	0.012	0.006	0.007	0.015	0.032
4 가	0.068	0.182	0.087	0.037	0.056	0.007
5	0.024	0.027	0.038	0.025	0.016	0.034
6	0.016	0.013	0.024	0.021	0.012	0.017
7	0.259	0.038	0.432	0.133	0.190	0.352
8	0.001	-	0.001	-	0.002	0.000
9	0.068	0.040	0.076	0.162	0.058	0.053
10	0.004	-	0.013	-	-	-

5.

가.

, , 가 ,

가

가 가 .

가

,

. < III-31>

.

< III-31>

(:)

	435	177	110	76	27	45
	127,151,430	54,433,063	36,124,735	19,247,272	15,945,547	1,400,813
1	60,192,591	31,104,607	12,185,700	8,936,059	7,020,266	945,959
2	874,411	73,807	302,109	397,649	77,105	23,741
3	5,694,954	2,131,023	1,444,359	1,313,226	555,425	250,921
4 가	20,794,243	14,549,519	1,415,257	1,048,938	3,744,877	35,652
5	4,958,072	817,884	3,082,391	730,766	319,043	7,988
6	1,861,689	741,412	424,278	380,412	283,790	31,797
7	12,644,363	2,912,341	3,211,878	4,004,118	2,453,759	62,267
8	875,754	74,196	228,956	308,272	264,330	.
9	8,114,494	1,518,798	3,521,099	1,830,350	1,226,952	17,295
10	10,699,338	67,955	10,308,708	297,482		25,193
1 8	107,896,077	52,404,789	22,294,928	17,119,440	14,718,595	1,358,325
()	10	12	6	10	12	11
()	60	45	78	87	69	23
()	25,794,883	10,686,083	4,481,750	6,710,550	2,625,000	1,291,500
1	4,929	5,094	8,060	2,868	6,074	1,085
2	4,183	4,904	4,975	2,551	5,607	1,052

< III-31>

1

2

(1-8)

(

) (117 , 1400)

1 2 ,

,

10% (1,560) ,
 1400 10%
 () .

< III-32> < III-33>

< III-32>

	1.000	1.000	1.000	1.000	1.000	1.000
1	0.473	0.571	0.337	0.464	0.440	0.675
2	0.007	0.001	0.008	0.021	0.005	0.017
3	0.045	0.039	0.040	0.068	0.035	0.179
4 가	0.164	0.267	0.039	0.054	0.235	0.025
5	0.039	0.015	0.085	0.038	0.020	0.006
6	0.015	0.014	0.012	0.020	0.018	0.023
7	0.099	0.054	0.089	0.208	0.154	0.044
8	0.007	0.001	0.006	0.016	0.017	-
9	0.064	0.028	0.097	0.095	0.077	0.012
10	0.084	0.001	0.285	0.015	-	0.018

< III-33>

()

	1.000	1.000	1.000	1.000	1.000	1.000
1	0.558	0.594	0.547	0.522	0.477	0.696
2	0.008	0.001	0.014	0.023	0.005	0.017
3	0.053	0.041	0.065	0.077	0.038	0.185
4 가	0.193	0.278	0.063	0.061	0.254	0.026
5	0.046	0.016	0.138	0.043	0.022	0.006
6	0.017	0.014	0.019	0.022	0.019	0.023
7	0.117	0.056	0.144	0.234	0.167	0.046
8	0.008	0.001	0.010	0.018	0.018	

.

< III-34> ,

< III-35> ,

< III-36> . ,

가

,

가

가

.

< III-34 >

						가							1 8
1	3	221960	63168	1278	1284	13697	617	685	13977	10725	23505	93024	105431
2	21	2657467	744695	27543	123900	14152	97694	17292	173971	5795	373818	1078607	1205042
3	10	3448211	1333146	43493	62994	394693	47629	91257	231295	6747	309926	927031	2211254
4	18	5054964	2520683	37068	246967	1134542	90919	53258	275385	29360	414560	175050	4388182
5	178	59331036	29425419	264941	2674559	9915028	2919705	797741	4797208	422155	3471198	4483059	51216756
6	45	9761514	4366414	36742	456534	868040	326131	180317	1006942	54992	947591	1517811	7296112
7	38	11177662	6171202	18797	530914	2472342	237127	177681	708956	69133	569498	139711	10386152
8	34	9905653	4822680	17832	333280	1988414	145553	101598	594861	46160	511744	1261168	8050378
9	30	14974243	5905197	264365	519055	2366679	468159	295834	3346359	168086	1173557	466951	13333734
10	3	1365134	626535	3833	35219	254587	235423	16207	50804	541	33231	108754	1223149
11	16	4525046	1904767	116006	211600	797757	166088	64695	978217	53871	121890	110154	4293001
12	12	2293623	1162083	11064	156511	343292	161971	39271	161873	6078	161720	89760	2042143
13	23	1862503	821216	29567	324492	104388	33871	16886	277620	2111	2256	248258	1610151
14	3	99787	50869	1882	5230	-	10867	4044	26895				99787
17	1	472627	274517		12415	126632	16318	4923					434805

< III-35 >

					가							
1	1.000	0.285	0.006	0.006	0.062	0.003	0.003	0.063	0.048	0.106	0.419	
2	1.000	0.280	0.010	0.047	0.005	0.037	0.007	0.065	0.002	0.141	0.406	
3	1.000	0.387	0.013	0.018	0.114	0.014	0.026	0.067	0.002	0.090	0.269	
4	1.000	0.499	0.007	0.049	0.224	0.018	0.011	0.054	0.006	0.082	0.035	
5	1.000	0.496	0.004	0.045	0.167	0.049	0.013	0.081	0.007	0.059	0.076	
6	1.000	0.447	0.004	0.047	0.089	0.033	0.018	0.103	0.006	0.097	0.155	
7	1.000	0.552	0.002	0.047	0.221	0.021	0.016	0.063	0.006	0.051	0.012	
8	1.000	0.487	0.002	0.034	0.201	0.015	0.010	0.060	0.005	0.052	0.127	
9	1.000	0.394	0.018	0.035	0.158	0.031	0.020	0.223	0.011	0.078	0.031	
10	1.000	0.459	0.003	0.026	0.186	0.172	0.012	0.037	0.000	0.024	0.080	
11	1.000	0.421	0.026	0.047	0.176	0.037	0.014	0.216	0.012	0.027	0.024	
12	1.000	0.507	0.005	0.068	0.150	0.071	0.017	0.071	0.003	0.071	0.039	
13	1.000	0.441	0.016	0.174	0.056	0.018	0.009	0.149	0.001	0.001	0.133	
14	1.000	0.510	0.019	0.052		0.109	0.041	0.270				
17	1.000	0.581		0.026	0.268	0.035	0.010					

< III-36 >

(,)

					가				
1	1.000	0.599	0.012	0.012	0.130	0.006	0.006	0.133	0.102
2	1.000	0.618	0.023	0.103	0.012	0.081	0.014	0.144	0.005
3	1.000	0.603	0.020	0.028	0.178	0.022	0.041	0.105	0.003
4	1.000	0.574	0.008	0.056	0.259	0.021	0.012	0.063	0.007
5	1.000	0.575	0.005	0.052	0.194	0.057	0.016	0.094	0.008
6	1.000	0.598	0.005	0.063	0.119	0.045	0.025	0.138	0.008
7	1.000	0.594	0.002	0.051	0.238	0.023	0.017	0.068	0.007
8	1.000	0.599	0.002	0.041	0.247	0.018	0.013	0.074	0.006
9	1.000	0.443	0.020	0.039	0.177	0.035	0.022	0.251	0.013
10	1.000	0.512	0.003	0.029	0.208	0.192	0.013	0.042	0.000
11	1.000	0.444	0.027	0.049	0.186	0.039	0.015	0.228	0.013
12	1.000	0.569	0.005	0.077	0.168	0.079	0.019	0.079	0.003
13	1.000	0.510	0.018	0.202	0.065	0.021	0.010	0.172	0.001
14	1.000	0.510	0.019	0.052		0.109	0.041	0.270	
17	1.000	0.631		0.029	0.291	0.038	0.011		

< III-37 >

1,496 10,196

1,293 7,764 가

가

가

< III-37>

(,)

		()		(.)	() ()	() ()
1	3	3	53	65,450	3,391	1,611
2	21	6	62	563,617	4,715	2,138
3	, 10	5	74	339,267	10,164	6,518
4	18	11	38	922,833	5,478	4,755
5	. 178	10	54	11,217,383	5,289	4,566
6	45	10	45	2,122,167	4,600	3,438
7	38	12	47	2,466,333	4,532	4,211
8	34	10	88	2,090,433	4,739	3,851
9	. 30	10	98	2,821,350	5,307	4,726
10	3	11	45	181,767	7,510	6,729
11	16	11	84	1,305,500	3,466	3,288
12	12	10	25	355,367	6,454	5,747
13	23	8	75	1,245,300	1,496	1,293
14	3	2	69	42,117	2,369	2,369
17	1	12	40	56,000	8,440	7,764

< III-38>

가

< III-38 >

(,) : ,

	435	4,183	177	4,904	110	4,975	76	2,551	27	5,607	45	1,052
1	3	1,611			2	1,650	1	1,428				
2	21	2,138			12	2,468	2	2,701			7	332
3	10	6,518			8	7,372			1	5,348	1	57
4	18	4,755	12	4,531	2	9,353	3	3,738	1	5,348		
5	178	4,566	78	5,072	49	5,376	28	2,689	14	5,756	9	1,407
6	45	3,438	12	5,025	17	3,783	4	3,155			12	1,168
7	38	4,211	28	4,583	2	3,741	2	2,635	3	4,671	3	616
8	34	3,851	23	4,845	8	1,859	1	746	2	4,746		
9	30	4,726	4	3,530	5	17,586	15	2,614	6	5,888		
10	3	6,729	2	5,729	1	10,757						
11	16	3,288	9	3,967			6	3,031			1	1,972
12	12	5,747	6	5,802	1	9,217	2	8,957			3	550
13	23	1,293	1	6,066	3	2,032	10	1,009			9	906
14	3	2,369	1	546			2	2,636				
17	1	7,764	1	7,764								

:

6.

가

50%

가

< III-39 >

가

가

38.3 34 가

가 6.2 14.8

< III-39 >

가

가

가

가

,

,

,

,

< III-39>

(: ,)

				(.)		
		108	121	111	42	26
		16.2	57.4	8,556.4	34.4	7.8
		19	19	19	7	5
		38.3	12.6	2,492.2	25.7	3.2
		44	46	39	12	7
		16.2	76.6	20,925.2	23.3	5.4
		16	16	14	9	6
		6.1	49.4	612.7	16.6	2.8
		11	21	21	9	6
		14.8	104.4	3,035	89.6	21.2
		2	2	2	1	1
		3	56.5	460	2	4
		6	6	6	1	0
		34	9.5	1,700.8	20	
		10	11	10	3	1
		3.1	3.1	288.6	3	1

<

III-40>

< III-40>

(: , %)

	107	643.3
	19	79.1
	44	698.7
	15	1,352.2
	11	948.1
	2	1650
	6	27.4
	10	240.8

:

,

가 .

< III-41>

94.8%

,

< III-41>

(: , %)

	102	94.8
	19	10.3
	42	70.9
	16	138.3
	11	345.6
	2	24.7
	6	2.6
	6	69.5

가가

< III-42>

가

가

가

가

가

5

117

가 .

< III-42>

(:)

	34	38.8	113	51.3	35	125.4
	3	37.3	19	20	4	41.3
	10	15.8	41	50.7	10	111.1
	6	41.7	13	39.7	6	117.5
	11	65.6	21	117.5	11	211.8
	1	30	2	40	1	30
	1	15	6	15.7	1	17
	2	16	11	16.6	2	16

< III-43> 가

13% , 가 (10%)
 10% 가 .

< III-43>

(: , %)

	21	9.6
	5	3.3
	5	8.7
	6	12.1
	4	12.9
	1	17.8
	0	0
	0	0

.

1.

가.

2

, 3

가

1

10

가 ,
31

27.9 (31

x 0.9)

가

가

4900

2500

가

6

(3 < 3>).

가

가

가

가

가 ,

,

IMF

(3).

가

10

가

가

가

가?

가

, .
()
가가
, ()
)
(, 30% 10%) 가 가
, 가
가
가 가
가 가
, 가 가
, 가 가

(10) 가 가 (),
가 가
가 가

가 .

가 가
가 가
가 .

2.

가.

1999 1 .

3

”
()

가

가

가

가

가

가

가

가

,

.

.

.

가

가

가

가

< IV-1 >

가

,

가

가

가

가

< IV-1 >

		가	
		가	

1)

가

가

< IV-2>

가 ,

가

가

가

가

가

가

가

가

가

3D

가

30

100%

가

가

30
가 .

< IV-2>

		23 38	
	, , , , , ,	, 3 41	
	,	8 () ¹⁾	
	, ,	8 ()	
	, ,	10 ()	
	가		
.			

:
) () 가

2)

IMF

가 .

1998

가

100%

가 ,
가 ,
가
가 .

가

3)

-
-
- ,
-

4)

가 .

, .

가 .
. 가
. ()
. 가
()
.

5)

가 가
. .
, 가
10 가 , 가 8
. (10)
, 가 10 가
. 10
前 ,

가
가 ,
가
,
) 5 가 30%(3
,
,
가 5
,
,
3
3 가
,
가
가 (simulation)

1)

가 가 가
가 .

< IV-3 >

		()			
	,	100%		100%	
	,	100%()		? %	
		80-100%		? %	
		70-90%		? %	
		() 100%	,	? %	
		(8) 100%		? %	

(() 23).
3

2)

1999 1 28 2

, 1999 1

100% 가

, 가

가

가 가 .

가

< IV-4 >

가

100%, 50% ,

가 .

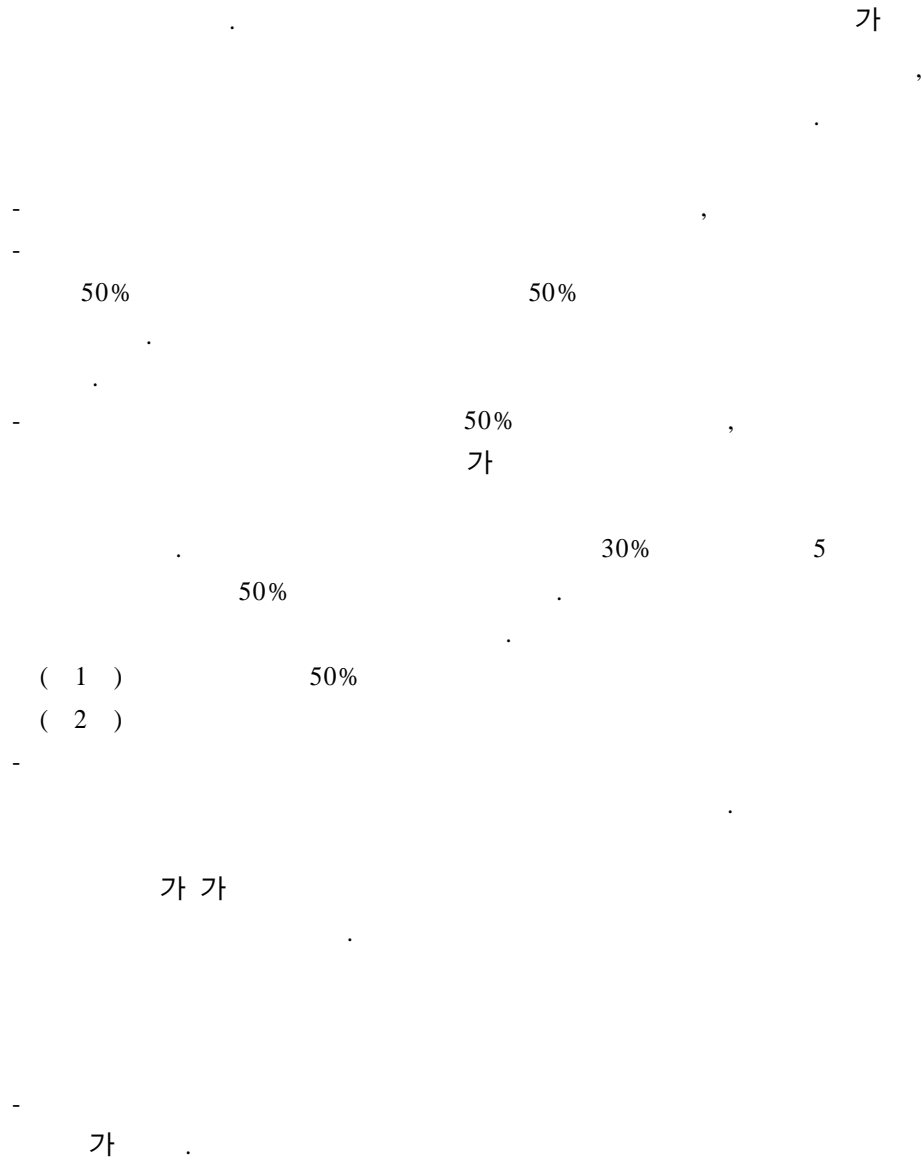
< IV-4> ()

	100%	50%
	70-90%	70-90%
	80-100%	80-100%

70-90%

50% , 50%
 가
 가
 가
 가
 (),
 ,
 가 ,
 가 3D
 ,
 ,
 가
 100% 가

3)



가 ()
가 , 가 . 100%
- , .
- .
(1) 80% .
(2) 50% .
(3) 80 90% ().
- .
- 가
< IV-5> .

< IV-5>

()

	1 ()	1-1 80% ()
	1	1-2 50% ()
		2-1 80% ()
	1 100% 2 90% ()	1 50% 2 ()
	100%()	50%()
	70%()	50%()
	50%()	50%()
	100%()	50%()

4)

가

가

가

가

3D

가

가 .

.

•

1.

가 , 가 가

「1997」

가

2.

가

가 ,
, 가 ,
가 가
가 가 .
,
.
가 ,
, 가
가
가 .
,
가
가 ,
,
가 가
1998 7
가
(3). ,

가

가

가

가

가

가

가

가

가

가

가

가

가

3.

가. .

. < -1> .

< -3>

-2> < -4> .

<

가

, 5 (, , , ,)

가

< -2> < -4> , 가

< -5> . < -5>

가

가 가

, 가 가

가 가

, 가

< -1>

(,) :

	1)		1)		1)		1)		1)		1)	
	435	4,183	177	4,904	110	4,975	76	2,551	27	5,607	45	1,052
105	3	1,611			2	1,650	1	1,428				
201	3	2,529			3	2,529						
202	5	311									5	311
203	4	2,622			1	5,099	2	2,701			1	315
204	1	4,040			1	4,040						
206	7	2,186			7	2,186						
207	1	460									1	460
301	8	7,372			8	7,372						
304	2	3,232							1	5,348		
401	15	4,569	11	4,765			3	3,738	1	5,348	1	57
402	3	5,551	1	3,405	2	9,353						
501	79	5,189	46	5,313	14	5,533	7	4,177	9	5,071	3	2,193
502	5	6,672			2	11,479			3	5,865		
503	46	3,599	14	4,550	11	6,211	15	2,200	2	7,218	4	792
504	8	4,783	16	4,948	5	5,921	3	2,817				
505	37	4,613			16	4,415	3	5,359			2	1,884
506	3	2,609	2	2,588	1	3,075						
601	10	3,757			9	4,143	1	2,986				
602	31	3,396	10	5,323	7	3,319	3	3,395			11	1,249
603	1	141									1	141
604	3	3,337	2	2,977	1	4,071						
701	24	4,480	20	4,593	1	3,783			2	4,746	1	189
704	14	3,690	8	4,554	1	3,697	2	2,635	1	4,445	2	905
801	26	4,159	20	4,756	3	2,489	1	746	2	4,746		
802	5	1,306			5	1,306						
803	3	5,538	3	5,538								
901	6	2,656	1	292			4	2,251	1	4,445		
903	1	7,218							1	7,218		
906	2	4,574	1	5,067			1	4,238				
907	21	5,145	2	5,314	5	17,586	10	2,690	4	5,908		
1001	2	5,729	2	5,729								
1003	1	10,757			1	10,757						
1101	4	6,088	3	6,290			1	5,675				
1102	11	2,871	6	2,963			5	2,839				
1103	1	1,972									1	1,972
1201	1	6,017	1	6,017								
1202	9	5,645	5	5,756			2	8,957			2	709
1205	2	6,064			1	9,217					1	284
1301	13	738			3	3,576	6	331			4	1,194
1302	1	4,238					1	4,238				
1303	9	2,427	1	6,023			3	2,420			5	517
1406	3	2,369	1	546			2	2,636				
1701	1	7,764	1	7,764								

) 1)

< -2>

가
가

105	0.385		0.332	0.560					
201	0.605		0.508						
202	0.074						0.296		
203	0.627		1.025	1.059			0.299		
204	0.966		0.812						
206	0.523		0.439						
207	0.110						0.437		
301	1.762		1.482						
304	0.773					0.954			
401	1.092	0.972		1.465		0.954	0.054		
402	1.327	0.694	1.880						
501	1.240	1.083	1.112	1.637	0.904		2.085		
502	1.595		2.307		1.046				
503	0.860	0.928	1.248	0.862	1.287		0.753		
504	1.143	1.009	1.190	1.104					
505	1.103		0.887	2.101			1.791		
506	0.624	0.528	0.618						
601	0.898		0.833	1.171					
602	0.812	1.085	0.667	1.331			1.187		
603	0.034						0.134		
604	0.798	0.607	0.818						
701	1.071	0.937	0.760		0.846		0.180		
704	0.882	0.929	0.743	1.033	0.793		0.860		
801	0.994	0.970	0.500	0.292	0.846				
802	0.312		0.263						
803	1.324	1.129							
901	0.635	0.060		0.882	0.793				
903	1.726				1.287				
906	1.093	1.033		1.661					
907	1.230	1.084	3.535	1.054	1.054				
1001	1.370	1.168							
1003	2.572		2.162						
1101	1.455	1.283		2.225					
1102	0.686	0.604		1.113					
1103	0.471						1.875		
1201	1.438	1.227							
1202	1.350	1.174		3.511			0.674		
1205	1.450		1.853				0.270		
1301	0.176		0.719	0.130			1.135		
1302	1.013			1.661					
1303	0.580	1.228		0.949			0.491		
1406	0.566	0.111		1.033					
1701	1.856	1.583							

: , , , ,

< -3>

: ,

	1)		1)		1)		1)		1)		1)	
	599	8,388	38	2,770	13	11,509	53	9,050	493	8,292	2	11,224
501	9	5,483	8	4,145					1	14,946		
503	4	8,416	2	1,417					2	14,926		
505	3	3,012	3	3,012								
506	11	11,003							10	10,238	1	11,382
602	1	16,332							1	16,332		
701	4	10,624	2	3,345					2	13,314		
801	3	1,182	3	1,182								
901	4	18,463							4	18,463		
904	8	24,851			3	20,856			5	28,896		
905	4	9,262	1	971					3	17,908		
906	15	6,442	9	3,464					6	7,657		
907	44	10,519	7	1,816	7	17,321	1	11,000	28	10,295	1	4,292
1102	1	11,806							1	11,806		
1401	40	11,462							40	11,462		
1402	231	7,139			3	9,027	50	9,108	178	6,678		
1403	159	10,926					2	5,425	157	11,016		
1404	3	10,418							3	10,418		
1405	8	3,942							8	3,942		
1406	5	7,575	3	2,271					2	21,587		
1407	5	8,158							5	8,158		
1408	5	13,933							5	13,933		
1501	8	9,476							8	9,476		
1502	2	11,312							2	11,312		
1503	15	8,971							15	8,971		
1701	1	14,317							1	14,317		
1702	6	20,183							6	20,183		

: 1)

501	0.654	1.496					1.802			
503	1.003	0.512					1.800			
505	0.359	1.087								
506	1.312						1.235	1.014		
602	1.947						1.970			
701	1.267	1.208					1.606			
801	0.141	0.427								
901	2.201						2.227			
904	2.963		1.812				3.485			
905	1.104	0.351					2.160			
906	0.768	1.251					0.923			
907	1.254	0.656	1.505	1.215			1.242	0.382		
1102	1.407						1.424			
1401	1.366						1.382			
1402	0.851		0.784	1.006			0.805			
1403	1.303			0.599			1.329			
1404	1.242						1.256			
1405	0.470						0.475			
1406	0.903	0.820					2.603			
1407	0.973						0.984			
1408	1.661						1.680			
1501	1.130						1.143			
1502	1.349						1.364			
1503	1.070						1.082			
1701	1.707						1.727			
1702	2.406						2.434			

: , , , ,

< -5> 가

105			
201			
202			
203			
204			
206			
207			
301			
304			
401			
402			
501			
502			
503			
504			
505			
506			
601			
602			
603			
604			
701			
704			
801			
802			
803			
901			
903			

904			
905			
906			
907			
1001			
1003			
1101			
1102			
1103			
1201			
1202			
1205			
1301			
1302			
1303			
1401			
1402			
1403			
1404			
1405			
1406			
1407			
1408			
1501			
1502			
1503			
1701			
1702			

1) '98

가 .
(< >). '98
'98
< -6> , < -7, 8>

2)

가 가 가 . < -7, 8>
1 . 51, 52 가
0.488 , 123 가 -0.133 .
< -5> 가 가 1.0,
0.5, 0, -0.5, -1.0
, < -7, 8>
. 1.0 .

3)

가 , 가 .

가 .

$\pm 5\%$ $\pm 10\%$

가

< -9, 10>

$\pm 5\%$

, < -11, 12>

$\pm 10\%$

< -9, 10>

< -7, 8>

-5% , +5%

$\pm 5\%$

-7, 8> ()

<

$\pm 5\%$

,

,

,

가

, 6

(

) .

< -11, 12>

< -6> '98

(:)

	(6)	(A)	() (A/ 700)
	2,729	1,979	2,827
10	2,862	2,112	3,017
13	2,723	1,973	2,819
15	2,670	1,920	2,743
17	2,748	1,998	2,854
18	2,465	1,715	2,450
19	2,684	1,934	2,763
20	2,728	1,978	2,826
21	2,572	1,822	2,603
22	2,642	1,892	2,703
23	2,853	2,103	3,004
24	2,765	2,015	2,879
25	2,684	1,934	2,763
26	2,670	1,920	2,743
27	2,525	1,775	2,536
28	2,877	2,127	3,039
29	3,694	2,944	4,206
30	2,594	1,844	2,634
31	2,628	1,878	2,683
32	2,628	1,878	2,683
33	2,482	1,732	2,474
34	2,945	2,195	3,136
35	3,470	2,720	3,886
36	2,637	1,887	2,696
40	2,643	1,893	2,704
45	2,652	1,902	2,717
60	2,634	1,884	2,691
62	2,975	2,225	3,179
63	2,554	1,804	2,577
64	2,483	1,733	2,476
93	2,598	1,848	2,640
	2,517	1,767	2,524

: 6 (700) ,

< -7> '98

(1)

	'98	()				
	2,827	1.000	0.000	0	0	1.000
11	2,743	0.970	-0.030			
12	2,826	0.999	-0.001			
13	2,743	0.970	-0.030			
14	2,743	0.970	-0.030			
15	2,918	1.032	0.032	-1.0	-0.133	0.867
16	2,794	0.988	-0.012			
21	2,854	1.010	0.010	-1.0	-0.133	0.867
22	2,450	0.867	-0.133	-0.5	-0.067	0.934
23	2,450	0.867	-0.133	0.0	0.000	1.000
24	2,763	0.977	-0.023	-0.5	-0.067	0.934
25	2,854	1.010	0.010			
26	2,854	1.010	0.010	-1.0	-0.133	0.867
27	2,704	0.957	-0.043	-0.5	-0.067	0.934
31	2,853	1.009	0.009	0.5	0.244	1.244
32	2,763	0.977	-0.023			
33	3,004	1.063	0.063			
34	2,704	0.957	-0.043	0.0	0.000	1.000
35	2,831	1.001	0.001			
41	2,787	0.986	-0.014	0.0	0.000	1.000
42	2,787	0.986	-0.014	0.0	0.000	1.000
51	4,206	1.488	0.488	0.5	0.244	1.244
52	2,827	1.000	0.000	0.5	0.244	1.244
53	3,290	1.164	0.164	0.0	0.000	1.000
54	2,662	0.942	-0.058	0.5	0.244	1.244
55	3,039	1.075	0.075	0.5	0.244	1.244
56	3,039	1.075	0.075	-0.5	-0.067	0.934
61	2,717	0.961	-0.039	0.0	0.000	1.000
62	2,717	0.961	-0.039	0.5	0.244	1.244
63	2,717	0.961	-0.039	-1.0	-0.133	0.867
64	2,717	0.961	-0.039	0.5	-0.067	0.934
71	2,700	0.955	-0.045	-0.5	-0.067	0.934
72	2,700	0.955	-0.045			
73	2,704	0.957	-0.043			
74	2,717	0.961	0.039	-0.5	-0.067	0.934
75	2,705	0.957	-0.043			
81	2,667	0.943	-0.057	-0.5	-0.067	0.934
82	2,667	0.943	-0.057	-1.0	-0.133	0.867
83	2,667	0.943	-0.057	0.5	0.244	1.244
91	2,476	0.876	-0.124	-0.5	-0.067	0.934
92	2,476	0.876	-0.124			
93	2,524	0.893	-0.107	1.0	0.488	1.488
94	2,524	0.893	-0.107	1.0	0.488	1.488
95	2,524	0.893	-0.107	0.0	0.000	1.000

< -8> '98

(2)

	'98	()				
96	2,524	0.893	-0.107	0.5	0.244	1.244
97	2,508	0.887	-0.113	0.5	0.244	1.244
101	3,136	1.109	0.109	0.5	0.244	1.244
102	3,886	1.374	0.374			
103	3,179	1.124	0.124	1.0	0.488	1.488
104	3,400	1.203	0.203			
111	2,703	0.956	-0.044	1.0	0.488	1.488
112	2,610	0.923	-0.077	-0.5	-0.067	0.934
113	2,474	0.875	-0.125	0.5	0.244	1.244
121	2,696	0.954	-0.046	1.0	0.488	1.488
122	2,719	0.962	-0.038	0.5	0.244	1.244
123	2,450	0.867	-0.133			
124	2,916	1.031	0.031			
125	2,696	0.954	-0.046	0.0	0.000	1.000
131	2,634	0.932	-0.068	0.0	0.000	1.000
132	2,524	0.893	-0.107	1.0	0.488	1.488
133	2,524	0.893	-0.107	0.0	0.000	1.000
141	2,827	1.000	0.000	0.5	0.244	1.244
142	2,827	1.000	0.000	-0.5	-0.067	0.934
143	2,827	1.000	0.000	0.0	0.000	1.000
144	2,827	1.000	0.000	0.0	0.000	1.000
145	2,827	1.000	0.000	-1.0	-0.133	0.867
146	2,827	1.000	0.000	-0.5	-0.067	0.934
147	2,827	1.000	0.000	-0.5	-0.067	0.934
148	2,827	1.000	0.000	0.5	0.244	1.244
151	2,827	1.000	0.000	0.0	0.000	1.000
152	2,827	1.000	0.000	0.5	0.244	1.244
153	2,827	1.000	0.000	0.0	0.000	1.000
161	2,827	1.000	0.000			
162	2,827	1.000	0.000			
163	2,827	1.000	0.000			
171	2,827	1.000	0.000	1.0	0.488	1.488
172	2,827	1.000	0.000	1.0	0.488	1.488

< -9> ± 5%

(1)

		-5%		+5%		()	¹⁾ ()
		0.950	1.000	1.050	1.000	2,827	1,979
11		0.922	0.970	1.019	0.970	2,743	1,920
12		0.950	0.999	1.049	0.999	2,826	1,978
13		0.922	0.970	1.019	0.970	2,743	1,920
14		0.922	0.970	1.019	0.970	2,743	1,920
15	0.867	0.980	1.032	1.084	0.980	2,772	1,940
16		0.939	0.988	1.038	0.988	2,794	1,956
21	0.867	0.959	1.010	1.060	0.959	2,712	1,898
22	0.934	0.823	0.867	0.910	0.910	2,573	1,801
23	1.000	0.823	0.867	0.910	0.910	2,573	1,801
24	0.934	0.928	0.977	1.026	0.934	2,639	1,847
25		0.959	1.010	1.060	1.010	2,854	1,998
26	0.867	0.959	1.010	1.060	0.959	2,712	1,898
27	0.934	0.909	0.957	1.004	0.934	2,639	1,847
31	1.244	0.959	1.009	1.060	1.060	2,996	2,097
32		0.928	0.977	1.026	0.977	2,763	1,934
33		1.010	1.063	1.116	1.063	3,004	2,103
34	1.000	0.909	0.957	1.004	1.000	2,827	1,979
35		0.951	1.001	1.051	1.001	2,831	1,982
41	1.000	0.937	0.986	1.035	1.000	2,827	1,979
42	1.000	0.937	0.986	1.035	1.000	2,827	1,979
51	1.244	1.413	1.488	1.562	1.413	3,995	2,796
52	1.244	0.950	1.000	1.050	1.050	2,969	2,078
53	1.000	1.106	1.164	1.222	1.106	3,126	2,188
54	1.244	0.894	0.942	0.989	0.989	2,795	1,957
55	1.244	1.021	1.075	1.129	1.129	3,191	2,233
56	0.934	1.021	1.075	1.129	1.021	2,887	2,021
61	1.000	0.913	0.961	1.009	1.000	2,827	1,979
62	1.244	0.913	0.961	1.009	1.009	2,853	1,997
63	0.867	0.913	0.961	1.009	0.913	2,581	1,807
64	0.934	0.913	0.961	1.009	0.934	2,639	1,847
71	0.934	0.907	0.955	1.003	0.934	2,639	1,847
72		0.907	0.955	1.003	0.955	2,700	1,890
73		0.909	0.957	1.004	0.957	2,704	1,893
74	0.934	0.913	0.961	1.009	0.934	2,639	1,847
75		0.909	0.957	1.005	0.957	2,705	1,894
81	0.934	0.896	0.943	0.990	0.934	2,639	1,847
82	0.867	0.896	0.943	0.990	0.896	2,533	1,773
83	1.244	0.896	0.943	0.990	0.990	2,800	1,960
91	0.934	0.832	0.876	0.919	0.919	2,600	1,820
92		0.832	0.876	0.919	0.876	2,476	1,733
93	1.488	0.848	0.893	0.938	0.938	2,651	1,855
94	1.488	0.848	0.893	0.938	0.938	2,651	1,855
95	1.000	0.848	0.893	0.938	0.938	2,651	1,855

1)

6 (700)

< -10> ± 5%

(2)

		-5%		+5%		()	¹⁾ ()
96	1.244	0.848	0.893	0.938	0.938	2,651	1,855
97	1.244	0.843	0.887	0.932	0.932	2,634	1,843
101	1.244	1.054	1.109	1.165	1.165	3,293	2,305
102		1.306	1.374	1.443	1.374	3,886	2,720
103	1.488	1.068	1.124	1.181	1.181	3,338	2,336
104		1.142	1.203	1.263	1.203	3,400	2,380
111	1.488	0.908	0.956	1.004	1.004	2,838	1,987
112	0.934	0.877	0.923	0.969	0.934	2,639	1,847
113	1.244	0.831	0.875	0.919	0.919	2,598	1,819
121	1.488	0.906	0.954	1.001	1.001	2,831	1,981
122	1.244	0.914	0.962	1.010	1.010	2,855	1,999
123		0.823	0.867	0.910	0.867	2,450	1,715
124		0.980	1.031	1.083	1.031	2,916	2,041
125	1.000	0.906	0.954	1.001	1.000	2,827	1,979
131	1.000	0.885	0.932	0.978	0.978	2,765	1,936
132	1.488	0.848	0.893	0.938	0.938	2,651	1,855
133	1.000	0.848	0.893	0.938	0.938	2,651	1,855
141	1.244	0.950	1.000	1.050	1.050	2,969	2,078
142	0.934	0.950	1.000	1.050	0.950	2,686	1,880
143	1.000	0.950	1.000	1.050	1.000	2,827	1,979
144	1.000	0.950	1.000	1.050	1.000	2,827	1,979
145	0.867	0.950	1.000	1.050	0.950	2,686	1,880
146	0.934	0.950	1.000	1.050	0.950	2,686	1,880
147	0.934	0.950	1.000	1.050	0.950	2,686	1,880
148	1.244	0.950	1.000	1.050	1.050	2,969	2,078
151	1.000	0.950	1.000	1.050	1.000	2,827	1,979
152	1.244	0.950	1.000	1.050	1.050	2,969	2,078
153	1.000	0.950	1.000	1.050	1.000	2,827	1,979
161		0.950	1.000	1.050	1.000	2,827	1,979
162		0.950	1.000	1.050	1.000	2,827	1,979
163		0.950	1.000	1.050	1.000	2,827	1,979
171	1.488	0.950	1.000	1.050	1.050	2,969	2,078
172	1.488	0.950	1.000	1.050	1.050	2,969	2,078

< -11> ± 10%

(1)

		-5%		+5%		()	¹⁾ ()
11		0.873	0.970	1.067	0.970	2,743	1,920
12		0.900	0.999	1.099	0.999	2,826	1,978
13		0.873	0.970	1.067	0.970	2,743	1,920
14		0.873	0.970	1.067	0.970	2,743	1,920
15	0.867	0.929	1.032	1.135	0.929	2,626	1,838
16		0.890	0.988	1.087	0.988	2,794	1,956
21	0.867	0.909	1.010	1.111	0.909	2,569	1,798
22	0.934	0.780	0.867	0.953	0.934	2,639	1,847
23	1.000	0.780	0.867	0.953	0.953	2,695	1,887
24	0.934	0.880	0.977	1.075	0.934	2,639	1,847
25		0.909	1.010	1.111	1.010	2,854	1,998
26	0.867	0.909	1.010	1.111	0.909	2,569	1,798
27	0.934	0.861	0.957	1.052	0.934	2,639	1,847
31	1.244	0.908	1.009	1.110	1.110	3,138	2,197
32		0.880	0.977	1.075	0.977	2,763	1,934
33		0.956	1.063	1.169	1.063	3,004	2,103
34	1.000	0.861	0.957	1.052	1.000	2,827	1,979
35		0.901	1.001	1.102	1.001	2,831	1,982
41	1.000	0.887	0.986	1.084	1.000	2,827	1,979
42	1.000	0.887	0.986	1.084	1.000	2,827	1,979
51	1.244	1.339	1.488	1.636	1.339	3,786	2,650
52	1.244	0.900	1.000	1.100	1.100	3,110	2,177
53	1.000	1.047	1.164	1.280	1.047	2,961	2,073
54	1.244	0.847	0.942	1.036	1.036	2,928	2,050
55	1.244	0.967	1.075	1.182	1.182	3,342	2,340
56	0.934	0.967	1.075	1.182	0.967	2,735	1,914
61	1.000	0.865	0.961	1.057	1.000	2,827	1,979
62	1.244	0.865	0.961	1.057	1.057	2,989	2,092
63	0.867	0.865	0.961	1.057	0.867	2,451	1,716
64	0.934	0.865	0.961	1.057	0.934	2,639	1,847
71	0.934	0.860	0.955	1.051	0.934	2,639	1,847
72		0.860	0.955	1.051	0.955	2,700	1,890
73		0.861	0.957	1.052	0.957	2,704	1,893
74	0.934	0.865	0.961	1.057	0.934	2,639	1,847
75		0.861	0.957	1.053	0.957	2,705	1,894
81	0.934	0.849	0.943	1.038	0.934	2,639	1,847
82	0.867	0.849	0.943	1.038	0.867	2,451	1,716
83	1.244	0.849	0.943	1.038	1.038	2,933	2,053
91	0.934	0.788	0.876	0.963	0.934	2,639	1,847
92		0.788	0.876	0.963	0.876	2,476	1,733
93	1.488	0.804	0.893	0.982	0.982	2,777	1,944
94	1.488	0.804	0.893	0.982	0.982	2,777	1,944
95	1.000	0.804	0.893	0.982	0.982	2,777	1,944

< -12> ± 10%

(2)

		-5%		+5%		()	〃()
96	1.244	0.804	0.893	0.982	0.982	2,777	1,944
97	1.244	0.798	0.887	0.976	0.976	2,759	1,931
101	1.244	0.998	1.109	1.220	1.220	3,449	2,415
102		1.237	1.374	1.512	1.374	3,886	2,720
103	1.488	1.012	1.124	1.237	1.237	3,496	2,448
104		1.082	1.203	1.323	1.203	3,400	2,380
111	1.488	0.860	0.956	1.052	1.052	2,973	2,081
112	0.934	0.831	0.923	1.016	0.934	2,639	1,847
113	1.244	0.788	0.875	0.963	0.963	2,722	1,905
121	1.488	0.858	0.954	1.049	1.049	2,965	2,076
122	1.244	0.866	0.962	1.058	1.058	2,991	2,094
123		0.780	0.867	0.953	0.867	2,450	1,715
124		0.928	1.031	1.134	1.031	2,916	2,041
125	1.000	0.858	0.954	1.049	1.000	2,827	1,979
131	1.000	0.838	0.932	1.025	1.000	2,827	1,979
132	1.488	0.804	0.893	0.982	0.982	2,777	1,944
133	1.000	0.804	0.893	0.982	0.982	2,777	1,944
141	1.244	0.900	1.000	1.100	1.100	3,110	2,177
142	0.934	0.900	1.000	1.100	0.934	2,639	1,847
143	1.000	0.900	1.000	1.100	1.000	2,827	1,979
144	1.000	0.900	1.000	1.100	1.000	2,827	1,979
145	0.867	0.900	1.000	1.100	0.900	2,544	1,781
146	0.934	0.900	1.000	1.100	0.934	2,639	1,847
147	0.934	0.900	1.000	1.100	0.934	2,639	1,847
148	1.244	0.900	1.000	1.100	1.100	3,110	2,177
151	1.000	0.900	1.000	1.100	1.000	2,827	1,979
152	1.244	0.900	1.000	1.100	1.100	3,110	2,177
153	1.000	0.900	1.000	1.100	1.000	2,827	1,979
161		0.900	1.000	1.100	1.000	2,827	1,979
162		0.900	1.000	1.100	1.000	2,827	1,979
163		0.900	1.000	1.100	1.000	2,827	1,979
171	1.488	0.900	1.000	1.100	1.100	3,110	2,177
172	1.488	0.900	1.000	1.100	1.100	3,110	2,177

.

가 , 가
가 . 가 가
가 , ,
가 . 가
가 가

가 .

가
-5%, -2%, 0%, 2%, 5%

5가 . < -13, 14> ±5% 6
, < -15,
16> 가 . < -17, 18> ±
10% 6
, < -19, 20> 가

< -13>

±5%

(1)

(6)

(:)

	10%	5%	2%		2%	5%	10%
11	1,728	1,824	1,882	1,920	1,958	2,016	2,112
12	1,780	1,879	1,938	1,978	2,018	2,077	2,176
13	1,728	1,824	1,882	1,920	1,958	2,016	2,112
14	1,728	1,824	1,882	1,920	1,958	2,016	2,112
15	1,746	1,843	1,902	1,940	1,979	2,037	2,134
16	1,760	1,858	1,917	1,956	1,995	2,054	2,152
21	1,708	1,803	1,860	1,898	1,936	1,993	2,088
22	1,621	1,711	1,765	1,801	1,837	1,891	1,981
23	1,621	1,711	1,765	1,801	1,837	1,891	1,981
24	1,663	1,755	1,810	1,847	1,884	1,940	2,032
25	1,798	1,898	1,958	1,998	2,038	2,098	2,198
26	1,708	1,803	1,860	1,898	1,936	1,993	2,088
27	1,663	1,755	1,810	1,847	1,884	1,940	2,032
31	1,887	1,992	2,055	2,097	2,139	2,202	2,307
32	1,741	1,837	1,895	1,934	1,973	2,031	2,127
33	1,893	1,998	2,061	2,103	2,145	2,208	2,313
34	1,781	1,880	1,939	1,979	2,019	2,078	2,177
35	1,784	1,883	1,942	1,982	2,021	2,081	2,180
41	1,781	1,880	1,939	1,979	2,019	2,078	2,177
42	1,781	1,880	1,939	1,979	2,019	2,078	2,177
51	2,517	2,657	2,740	2,796	2,852	2,936	3,076
52	1,870	1,974	2,036	2,078	2,120	2,182	2,286
53	1,969	2,078	2,144	2,188	2,232	2,297	2,407
54	1,761	1,859	1,917	1,957	1,996	2,054	2,152
55	2,010	2,122	2,189	2,233	2,278	2,345	2,457
56	1,819	1,920	1,980	2,021	2,061	2,122	2,223
61	1,781	1,880	1,939	1,979	2,019	2,078	2,177
62	1,797	1,897	1,957	1,997	2,037	2,097	2,197
63	1,626	1,717	1,771	1,807	1,843	1,897	1,988
64	1,663	1,755	1,810	1,847	1,884	1,940	2,032
71	1,663	1,755	1,810	1,847	1,884	1,940	2,032
72	1,701	1,796	1,852	1,890	1,928	1,985	2,079
73	1,704	1,798	1,855	1,893	1,931	1,988	2,082
74	1,663	1,755	1,810	1,847	1,884	1,940	2,032
75	1,704	1,799	1,856	1,894	1,932	1,988	2,083
81	1,663	1,755	1,810	1,847	1,884	1,940	2,032
82	1,596	1,685	1,738	1,773	1,809	1,862	1,951
83	1,764	1,862	1,921	1,960	1,999	2,058	2,156
91	1,638	1,729	1,783	1,820	1,856	1,911	2,002
92	1,560	1,646	1,698	1,733	1,768	1,820	1,906
93	1,670	1,763	1,818	1,855	1,892	1,948	2,041
94	1,670	1,763	1,818	1,855	1,892	1,948	2,041
95	1,670	1,763	1,818	1,855	1,892	1,948	2,041

< -14>

±5%

(2)

(6)

(:)

	10%	5%	2%		2%	5%	10%
96	1,670	1,763	1,818	1,855	1,892	1,948	2,041
97	1,659	1,751	1,807	1,843	1,880	1,936	2,028
101	2,074	2,190	2,259	2,305	2,351	2,420	2,535
102	2,448	2,584	2,666	2,720	2,774	2,856	2,992
103	2,103	2,219	2,290	2,336	2,383	2,453	2,570
104	2,142	2,261	2,332	2,380	2,428	2,499	2,618
111	1,788	1,887	1,947	1,987	2,026	2,086	2,185
112	1,663	1,755	1,810	1,847	1,884	1,940	2,032
113	1,637	1,728	1,782	1,819	1,855	1,910	2,000
121	1,783	1,882	1,942	1,981	2,021	2,080	2,179
122	1,799	1,899	1,959	1,999	2,039	2,099	2,199
123	1,544	1,629	1,681	1,715	1,749	1,801	1,887
124	1,837	1,939	2,000	2,041	2,082	2,143	2,245
125	1,781	1,880	1,939	1,979	2,019	2,078	2,177
131	1,742	1,839	1,897	1,936	1,974	2,032	2,129
132	1,670	1,763	1,818	1,855	1,892	1,948	2,041
133	1,670	1,763	1,818	1,855	1,892	1,948	2,041
141	1,870	1,974	2,036	2,078	2,120	2,182	2,286
142	1,692	1,786	1,842	1,880	1,918	1,974	2,068
143	1,781	1,880	1,939	1,979	2,019	2,078	2,177
144	1,781	1,880	1,939	1,979	2,019	2,078	2,177
145	1,692	1,786	1,842	1,880	1,918	1,974	2,068
146	1,692	1,786	1,842	1,880	1,918	1,974	2,068
147	1,692	1,786	1,842	1,880	1,918	1,974	2,068
148	1,870	1,974	2,036	2,078	2,120	2,182	2,286
151	1,781	1,880	1,939	1,979	2,019	2,078	2,177
152	1,870	1,974	2,036	2,078	2,120	2,182	2,286
153	1,781	1,880	1,939	1,979	2,019	2,078	2,177
161	1,781	1,880	1,939	1,979	2,019	2,078	2,177
162	1,781	1,880	1,939	1,979	2,019	2,078	2,177
163	1,781	1,880	1,939	1,979	2,019	2,078	2,177
171	1,870	1,974	2,036	2,078	2,120	2,182	2,286
172	1,870	1,974	2,036	2,078	2,120	2,182	2,286

< -15>

±5%

(1)

(가)

(:)

	10%	5%	2%		2%	5%	10%
11	2,469	2,606	2,688	2,743	2,798	2,880	3,017
12	2,543	2,684	2,769	2,826	2,882	2,967	3,108
13	2,469	2,606	2,688	2,743	2,798	2,880	3,017
14	2,469	2,606	2,688	2,743	2,798	2,880	3,017
15	2,495	2,633	2,717	2,772	2,827	2,911	3,049
16	2,515	2,655	2,739	2,794	2,850	2,934	3,074
21	2,440	2,576	2,657	2,712	2,766	2,847	2,983
22	2,315	2,444	2,521	2,573	2,624	2,701	2,830
23	2,315	2,444	2,521	2,573	2,624	2,701	2,830
24	2,375	2,507	2,586	2,639	2,692	2,771	2,903
25	2,569	2,712	2,797	2,854	2,911	2,997	3,140
26	2,440	2,576	2,657	2,712	2,766	2,847	2,983
27	2,375	2,507	2,586	2,639	2,692	2,771	2,903
31	2,696	2,846	2,936	2,996	3,055	3,145	3,295
32	2,487	2,625	2,708	2,763	2,818	2,901	3,039
33	2,704	2,854	2,944	3,004	3,064	3,155	3,305
34	2,544	2,686	2,771	2,827	2,884	2,969	3,110
35	2,548	2,690	2,774	2,831	2,888	2,973	3,114
41	2,544	2,686	2,771	2,827	2,884	2,969	3,110
42	2,544	2,686	2,771	2,827	2,884	2,969	3,110
51	3,595	3,795	3,915	3,995	4,075	4,194	4,394
52	2,672	2,820	2,909	2,969	3,028	3,117	3,265
53	2,813	2,969	3,063	3,126	3,188	3,282	3,438
54	2,516	2,655	2,739	2,795	2,851	2,935	3,075
55	2,871	3,031	3,127	3,191	3,254	3,350	3,510
56	2,598	2,742	2,829	2,887	2,944	3,031	3,175
61	2,544	2,686	2,771	2,827	2,884	2,969	3,110
62	2,568	2,710	2,796	2,853	2,910	2,996	3,138
63	2,323	2,452	2,530	2,581	2,633	2,710	2,839
64	2,375	2,507	2,586	2,639	2,692	2,771	2,903
71	2,375	2,507	2,586	2,639	2,692	2,771	2,903
72	2,430	2,565	2,646	2,700	2,754	2,835	2,970
73	2,434	2,569	2,650	2,704	2,758	2,840	2,975
74	2,375	2,507	2,586	2,639	2,692	2,771	2,903
75	2,435	2,570	2,651	2,705	2,759	2,841	2,976
81	2,375	2,507	2,586	2,639	2,692	2,771	2,903
82	2,280	2,407	2,483	2,533	2,584	2,660	2,787
83	2,520	2,660	2,744	2,800	2,856	2,940	3,080
91	2,340	2,470	2,548	2,600	2,651	2,729	2,859
92	2,228	2,352	2,426	2,476	2,525	2,600	2,723
93	2,385	2,518	2,597	2,651	2,704	2,783	2,916
94	2,385	2,518	2,597	2,651	2,704	2,783	2,916
95	2,385	2,518	2,597	2,651	2,704	2,783	2,916

< -16>

±5%

(2)

(가)

(:)

	10%	5%	2%		2%	5%	10%
96	2,385	2,518	2,597	2,651	2,704	2,783	2,916
97	2,370	2,502	2,581	2,634	2,686	2,765	2,897
101	2,963	3,128	3,227	3,293	3,358	3,457	3,622
102	3,497	3,691	3,808	3,886	3,963	4,080	4,274
103	3,004	3,171	3,271	3,338	3,404	3,504	3,671
104	3,060	3,230	3,332	3,400	3,468	3,570	3,740
111	2,554	2,696	2,781	2,838	2,895	2,980	3,122
112	2,375	2,507	2,586	2,639	2,692	2,771	2,903
113	2,338	2,468	2,546	2,598	2,650	2,728	2,858
121	2,547	2,689	2,774	2,831	2,887	2,972	3,114
122	2,570	2,712	2,798	2,855	2,912	2,998	3,141
123	2,205	2,328	2,401	2,450	2,499	2,573	2,695
124	2,624	2,770	2,857	2,916	2,974	3,062	3,207
125	2,544	2,686	2,771	2,827	2,884	2,969	3,110
131	2,489	2,627	2,710	2,765	2,821	2,904	3,042
132	2,385	2,518	2,597	2,651	2,704	2,783	2,916
133	2,385	2,518	2,597	2,651	2,704	2,783	2,916
141	2,672	2,820	2,909	2,969	3,028	3,117	3,265
142	2,417	2,551	2,632	2,686	2,740	2,820	2,954
143	2,544	2,686	2,771	2,827	2,884	2,969	3,110
144	2,544	2,686	2,771	2,827	2,884	2,969	3,110
145	2,417	2,551	2,632	2,686	2,740	2,820	2,954
146	2,417	2,551	2,632	2,686	2,740	2,820	2,954
147	2,417	2,551	2,632	2,686	2,740	2,820	2,954
148	2,672	2,820	2,909	2,969	3,028	3,117	3,265
151	2,544	2,686	2,771	2,827	2,884	2,969	3,110
152	2,672	2,820	2,909	2,969	3,028	3,117	3,265
153	2,544	2,686	2,771	2,827	2,884	2,969	3,110
161	2,544	2,686	2,771	2,827	2,884	2,969	3,110
162	2,544	2,686	2,771	2,827	2,884	2,969	3,110
163	2,544	2,686	2,771	2,827	2,884	2,969	3,110
171	2,672	2,820	2,909	2,969	3,028	3,117	3,265
172	2,672	2,820	2,909	2,969	3,028	3,117	3,265

< -17>

± 10 %

(6)

(:)

	10%	5%	2%		2%	5%	10%
11	1,728	1,824	1,882	1,920	1,958	2,016	2,112
12	1,780	1,879	1,938	1,978	2,018	2,077	2,176
13	1,728	1,824	1,882	1,920	1,958	2,016	2,112
14	1,728	1,824	1,882	1,920	1,958	2,016	2,112
15	1,654	1,746	1,801	1,838	1,875	1,930	2,022
16	1,760	1,858	1,917	1,956	1,995	2,054	2,152
21	1,618	1,708	1,762	1,798	1,834	1,888	1,978
22	1,663	1,755	1,810	1,847	1,884	1,940	2,032
23	1,698	1,792	1,849	1,887	1,924	1,981	2,075
24	1,663	1,755	1,810	1,847	1,884	1,940	2,032
25	1,798	1,898	1,958	1,998	2,038	2,098	2,198
26	1,618	1,708	1,762	1,798	1,834	1,888	1,978
27	1,663	1,755	1,810	1,847	1,884	1,940	2,032
31	1,977	2,087	2,153	2,197	2,241	2,307	2,416
32	1,741	1,837	1,895	1,934	1,973	2,031	2,127
33	1,893	1,998	2,061	2,103	2,145	2,208	2,313
34	1,781	1,880	1,939	1,979	2,019	2,078	2,177
35	1,784	1,883	1,942	1,982	2,021	2,081	2,180
41	1,781	1,880	1,939	1,979	2,019	2,078	2,177
42	1,781	1,880	1,939	1,979	2,019	2,078	2,177
51	2,385	2,517	2,597	2,650	2,703	2,782	2,915
52	1,959	2,068	2,133	2,177	2,220	2,286	2,395
53	1,865	1,969	2,031	2,073	2,114	2,176	2,280
54	1,845	1,947	2,009	2,050	2,091	2,152	2,255
55	2,106	2,223	2,293	2,340	2,386	2,457	2,574
56	1,723	1,819	1,876	1,914	1,953	2,010	2,106
61	1,781	1,880	1,939	1,979	2,019	2,078	2,177
62	1,883	1,988	2,050	2,092	2,134	2,197	2,301
63	1,544	1,630	1,681	1,716	1,750	1,802	1,887
64	1,663	1,755	1,810	1,847	1,884	1,940	2,032
71	1,663	1,755	1,810	1,847	1,884	1,940	2,032
72	1,701	1,796	1,852	1,890	1,928	1,985	2,079
73	1,704	1,798	1,855	1,893	1,931	1,988	2,082
74	1,663	1,755	1,810	1,847	1,884	1,940	2,032
75	1,704	1,799	1,856	1,894	1,932	1,988	2,083
81	1,663	1,755	1,810	1,847	1,884	1,940	2,032
82	1,544	1,630	1,681	1,716	1,750	1,802	1,887
83	1,848	1,951	2,012	2,053	2,094	2,156	2,259
91	1,663	1,755	1,810	1,847	1,884	1,940	2,032
92	1,560	1,646	1,698	1,733	1,768	1,820	1,906
93	1,749	1,847	1,905	1,944	1,983	2,041	2,138
94	1,749	1,847	1,905	1,944	1,983	2,041	2,138
95	1,749	1,847	1,905	1,944	1,983	2,041	2,138

< -18>

± 10 %

(6)

(:)

	10%	5%	2%		2%	5%	10%
96	1,749	1,847	1,905	1,944	1,983	2,041	2,138
97	1,738	1,835	1,893	1,931	1,970	2,028	2,124
101	2,173	2,294	2,366	2,415	2,463	2,535	2,656
102	2,448	2,584	2,666	2,720	2,774	2,856	2,992
103	2,203	2,325	2,399	2,448	2,496	2,570	2,692
104	2,142	2,261	2,332	2,380	2,428	2,499	2,618
111	1,873	1,977	2,040	2,081	2,123	2,185	2,289
112	1,663	1,755	1,810	1,847	1,884	1,940	2,032
113	1,715	1,810	1,867	1,905	1,943	2,000	2,096
121	1,868	1,972	2,034	2,076	2,117	2,179	2,283
122	1,884	1,989	2,052	2,094	2,136	2,199	2,303
123	1,544	1,629	1,681	1,715	1,749	1,801	1,887
124	1,837	1,939	2,000	2,041	2,082	2,143	2,245
125	1,781	1,880	1,939	1,979	2,019	2,078	2,177
131	1,781	1,880	1,939	1,979	2,019	2,078	2,177
132	1,749	1,847	1,905	1,944	1,983	2,041	2,138
133	1,749	1,847	1,905	1,944	1,983	2,041	2,138
141	1,959	2,068	2,133	2,177	2,220	2,286	2,395
142	1,663	1,755	1,810	1,847	1,884	1,940	2,032
143	1,781	1,880	1,939	1,979	2,019	2,078	2,177
144	1,781	1,880	1,939	1,979	2,019	2,078	2,177
145	1,603	1,692	1,745	1,781	1,817	1,870	1,959
146	1,663	1,755	1,810	1,847	1,884	1,940	2,032
147	1,663	1,755	1,810	1,847	1,884	1,940	2,032
148	1,959	2,068	2,133	2,177	2,220	2,286	2,395
151	1,781	1,880	1,939	1,979	2,019	2,078	2,177
152	1,959	2,068	2,133	2,177	2,220	2,286	2,395
153	1,781	1,880	1,939	1,979	2,019	2,078	2,177
161	1,781	1,880	1,939	1,979	2,019	2,078	2,177
162	1,781	1,880	1,939	1,979	2,019	2,078	2,177
163	1,781	1,880	1,939	1,979	2,019	2,078	2,177
171	1,959	2,068	2,133	2,177	2,220	2,286	2,395
172	1,959	2,068	2,133	2,177	2,220	2,286	2,395

< -19>

± 10%

1)

(가)

(:)

	10%	5%	2%		2%	5%	10%
11	2,469	2,606	2,688	2,743	2,798	2,880	3,017
12	2,543	2,684	2,769	2,826	2,882	2,967	3,108
13	2,469	2,606	2,688	2,743	2,798	2,880	3,017
14	2,469	2,606	2,688	2,743	2,798	2,880	3,017
15	2,363	2,495	2,574	2,626	2,679	2,757	2,889
16	2,515	2,655	2,739	2,794	2,850	2,934	3,074
21	2,312	2,440	2,517	2,569	2,620	2,697	2,826
22	2,375	2,507	2,586	2,639	2,692	2,771	2,903
23	2,426	2,560	2,641	2,695	2,749	2,830	2,965
24	2,375	2,507	2,586	2,639	2,692	2,771	2,903
25	2,569	2,712	2,797	2,854	2,911	2,997	3,140
26	2,312	2,440	2,517	2,569	2,620	2,697	2,826
27	2,375	2,507	2,586	2,639	2,692	2,771	2,903
31	2,824	2,981	3,075	3,138	3,201	3,295	3,452
32	2,487	2,625	2,708	2,763	2,818	2,901	3,039
33	2,704	2,854	2,944	3,004	3,064	3,155	3,305
34	2,544	2,686	2,771	2,827	2,884	2,969	3,110
35	2,548	2,690	2,774	2,831	2,888	2,973	3,114
41	2,544	2,686	2,771	2,827	2,884	2,969	3,110
42	2,544	2,686	2,771	2,827	2,884	2,969	3,110
51	3,407	3,596	3,710	3,786	3,861	3,975	4,164
52	2,799	2,954	3,048	3,110	3,172	3,265	3,421
53	2,665	2,813	2,902	2,961	3,020	3,109	3,257
54	2,635	2,782	2,870	2,928	2,987	3,075	3,221
55	3,008	3,175	3,276	3,342	3,409	3,510	3,677
56	2,461	2,598	2,680	2,735	2,789	2,871	3,008
61	2,544	2,686	2,771	2,827	2,884	2,969	3,110
62	2,690	2,839	2,929	2,989	3,049	3,138	3,288
63	2,206	2,329	2,402	2,451	2,500	2,574	2,696
64	2,375	2,507	2,586	2,639	2,692	2,771	2,903
71	2,375	2,507	2,586	2,639	2,692	2,771	2,903
72	2,430	2,565	2,646	2,700	2,754	2,835	2,970
73	2,434	2,569	2,650	2,704	2,758	2,840	2,975
74	2,375	2,507	2,586	2,639	2,692	2,771	2,903
75	2,435	2,570	2,651	2,705	2,759	2,841	2,976
81	2,375	2,507	2,586	2,639	2,692	2,771	2,903
82	2,206	2,329	2,402	2,451	2,500	2,574	2,696
83	2,640	2,787	2,875	2,933	2,992	3,080	3,227
91	2,375	2,507	2,586	2,639	2,692	2,771	2,903
92	2,228	2,352	2,426	2,476	2,525	2,600	2,723
93	2,499	2,638	2,721	2,777	2,832	2,916	3,054
94	2,499	2,638	2,721	2,777	2,832	2,916	3,054
95	2,499	2,638	2,721	2,777	2,832	2,916	3,054

< -20>

± 10 %

(2)

(가)

(:)

	10%	5%	2%		2%	5%	10%
96	2,499	2,638	2,721	2,777	2,832	2,916	3,054
97	2,483	2,621	2,704	2,759	2,814	2,897	3,035
101	3,104	3,277	3,380	3,449	3,518	3,622	3,794
102	3,497	3,691	3,808	3,886	3,963	4,080	4,274
103	3,147	3,322	3,427	3,496	3,566	3,671	3,846
104	3,060	3,230	3,332	3,400	3,468	3,570	3,740
111	2,676	2,824	2,914	2,973	3,033	3,122	3,270
112	2,375	2,507	2,586	2,639	2,692	2,771	2,903
113	2,450	2,586	2,667	2,722	2,776	2,858	2,994
121	2,669	2,817	2,906	2,965	3,025	3,114	3,262
122	2,692	2,842	2,931	2,991	3,051	3,141	3,290
123	2,205	2,328	2,401	2,450	2,499	2,573	2,695
124	2,624	2,770	2,857	2,916	2,974	3,062	3,207
125	2,544	2,686	2,771	2,827	2,884	2,969	3,110
131	2,544	2,686	2,771	2,827	2,884	2,969	3,110
132	2,499	2,638	2,721	2,777	2,832	2,916	3,054
133	2,499	2,638	2,721	2,777	2,832	2,916	3,054
141	2,799	2,954	3,048	3,110	3,172	3,265	3,421
142	2,375	2,507	2,586	2,639	2,692	2,771	2,903
143	2,544	2,686	2,771	2,827	2,884	2,969	3,110
144	2,544	2,686	2,771	2,827	2,884	2,969	3,110
145	2,290	2,417	2,494	2,544	2,595	2,672	2,799
146	2,375	2,507	2,586	2,639	2,692	2,771	2,903
147	2,375	2,507	2,586	2,639	2,692	2,771	2,903
148	2,799	2,954	3,048	3,110	3,172	3,265	3,421
151	2,544	2,686	2,771	2,827	2,884	2,969	3,110
152	2,799	2,954	3,048	3,110	3,172	3,265	3,421
153	2,544	2,686	2,771	2,827	2,884	2,969	3,110
161	2,544	2,686	2,771	2,827	2,884	2,969	3,110
162	2,544	2,686	2,771	2,827	2,884	2,969	3,110
163	2,544	2,686	2,771	2,827	2,884	2,969	3,110
171	2,799	2,954	3,048	3,110	3,172	3,265	3,421
172	2,799	2,954	3,048	3,110	3,172	3,265	3,421

. 가

1) 가

가 가 (3).
가 , 가 (1998 7 가
) , 3 , 51
1 20 가 1.48 .

가 가
(60) (20)

(1.48) 1.35 가
5% 가 10% 가
, ±5% 1998
1998 가

가 가
가 가
가 < -21 23> .

1 5
가 ,
1 1 4,500
1 1 2,500 가 .

2) 가

가
가 .

가 .

가

가 가 . ,

가 .

가

1 5

가 . 가

< -24 26 >

< -21>

(1)

(1)

:

/	350					117 349					116						
	51	36	50	21	35	20	51	36	50	21	35	20	51	36	50	21	35
	2,827	2,969	3,110	3,251	3,110	3,251	3,393	3,534	3,393	3,534	3,675	3,817					
11	2,743	2,880	3,017	3,154	3,017	3,154	3,291	3,429	3,291	3,429	3,566	3,703					
12	2,826	2,967	3,108	3,250	3,108	3,250	3,391	3,532	3,391	3,532	3,673	3,815					
13	2,743	2,880	3,017	3,154	3,017	3,154	3,291	3,429	3,291	3,429	3,566	3,703					
14	2,743	2,880	3,017	3,154	3,017	3,154	3,291	3,429	3,291	3,429	3,566	3,703					
15	2,772	2,911	3,049	3,188	3,049	3,188	3,326	3,465	3,326	3,465	3,604	3,742					
16	2,794	2,934	3,074	3,214	3,074	3,214	3,353	3,493	3,353	3,493	3,633	3,772					
21	2,712	2,847	2,983	3,118	2,983	3,118	3,254	3,389	3,254	3,389	3,525	3,661					
22	2,573	2,701	2,830	2,958	2,830	2,958	3,087	3,216	3,087	3,216	3,344	3,473					
23	2,573	2,701	2,830	2,958	2,830	2,958	3,087	3,216	3,087	3,216	3,344	3,473					
24	2,639	2,771	2,903	3,035	2,903	3,035	3,167	3,299	3,167	3,299	3,431	3,563					
25	2,854	2,997	3,140	3,282	3,140	3,282	3,425	3,568	3,425	3,568	3,711	3,853					
26	2,712	2,847	2,983	3,118	2,983	3,118	3,254	3,389	3,254	3,389	3,525	3,661					
27	2,639	2,771	2,903	3,035	2,903	3,035	3,167	3,299	3,167	3,299	3,431	3,563					
31	2,996	3,145	3,295	3,445	3,295	3,445	3,595	3,744	3,595	3,744	3,894	4,044					
32	2,763	2,901	3,039	3,177	3,039	3,177	3,315	3,454	3,315	3,454	3,592	3,730					
33	3,004	3,155	3,305	3,455	3,305	3,455	3,605	3,755	3,605	3,755	3,906	4,056					
34	2,827	2,969	3,110	3,251	3,110	3,251	3,393	3,534	3,393	3,534	3,675	3,817					
35	2,831	2,973	3,114	3,256	3,114	3,256	3,397	3,539	3,397	3,539	3,680	3,822					
41	2,827	2,969	3,110	3,251	3,110	3,251	3,393	3,534	3,393	3,534	3,675	3,817					
42	2,827	2,969	3,110	3,251	3,110	3,251	3,393	3,534	3,393	3,534	3,675	3,817					
51	3,995	4,194	4,394	4,594	4,394	4,594	4,794	4,993	4,794	4,993	5,193	5,393					
52	2,969	3,117	3,265	3,414	3,265	3,414	3,562	3,711	3,562	3,711	3,859	4,007					
53	3,126	3,282	3,438	3,594	3,438	3,594	3,751	3,907	3,751	3,907	4,063	4,219					
54	2,795	2,935	3,075	3,214	3,075	3,214	3,354	3,494	3,354	3,494	3,634	3,773					
55	3,191	3,350	3,510	3,669	3,510	3,669	3,829	3,988	3,829	3,988	4,148	4,307					
56	2,887	3,031	3,175	3,319	3,175	3,319	3,464	3,608	3,464	3,608	3,752	3,897					
61	2,827	2,969	3,110	3,251	3,110	3,251	3,393	3,534	3,393	3,534	3,675	3,817					
62	2,853	2,996	3,138	3,281	3,138	3,281	3,424	3,566	3,424	3,566	3,709	3,852					
63	2,581	2,710	2,839	2,968	2,839	2,968	3,098	3,227	3,098	3,227	3,356	3,485					
64	2,639	2,771	2,903	3,035	2,903	3,035	3,167	3,299	3,167	3,299	3,431	3,563					

< -22>

(2)

(1)

:

/	350					117 349					116						
	51	36	50	21	35	20	51	36	50	21	35	20	51	36	50	21	35
71	2,639	2,771	2,903	3,035	2,903	3,035	3,167	3,299	3,167	3,299	3,431	3,563					
72	2,700	2,835	2,970	3,105	2,970	3,105	3,240	3,375	3,240	3,375	3,510	3,645					
73	2,704	2,840	2,975	3,110	2,975	3,110	3,245	3,380	3,245	3,380	3,516	3,651					
74	2,639	2,771	2,903	3,035	2,903	3,035	3,167	3,299	3,167	3,299	3,431	3,563					
75	2,705	2,841	2,976	3,111	2,976	3,111	3,246	3,382	3,246	3,382	3,517	3,652					
81	2,639	2,771	2,903	3,035	2,903	3,035	3,167	3,299	3,167	3,299	3,431	3,563					
82	2,533	2,660	2,787	2,913	2,787	2,913	3,040	3,167	3,040	3,167	3,293	3,420					
83	2,800	2,940	3,080	3,220	3,080	3,220	3,360	3,500	3,360	3,500	3,640	3,780					
91	2,600	2,729	2,859	2,989	2,859	2,989	3,119	3,249	3,119	3,249	3,379	3,509					
92	2,476	2,600	2,723	2,847	2,723	2,847	2,971	3,095	2,971	3,095	3,218	3,342					
93	2,651	2,783	2,916	3,048	2,916	3,048	3,181	3,313	3,181	3,313	3,446	3,578					
94	2,651	2,783	2,916	3,048	2,916	3,048	3,181	3,313	3,181	3,313	3,446	3,578					
95	2,651	2,783	2,916	3,048	2,916	3,048	3,181	3,313	3,181	3,313	3,446	3,578					
96	2,651	2,783	2,916	3,048	2,916	3,048	3,181	3,313	3,181	3,313	3,446	3,578					
97	2,634	2,765	2,897	3,029	2,897	3,029	3,160	3,292	3,160	3,292	3,424	3,555					
101	3,293	3,457	3,622	3,786	3,622	3,786	3,951	4,116	3,951	4,116	4,280	4,445					
102	3,886	4,080	4,274	4,469	4,274	4,469	4,663	4,857	4,663	4,857	5,051	5,246					
103	3,338	3,504	3,671	3,838	3,671	3,838	4,005	4,172	4,005	4,172	4,339	4,506					
104	3,400	3,570	3,740	3,910	3,740	3,910	4,080	4,250	4,080	4,250	4,420	4,590					
111	2,838	2,980	3,122	3,264	3,122	3,264	3,406	3,548	3,406	3,548	3,689	3,831					
112	2,639	2,771	2,903	3,035	2,903	3,035	3,167	3,299	3,167	3,299	3,431	3,563					
113	2,598	2,728	2,858	2,988	2,858	2,988	3,118	3,248	3,118	3,248	3,377	3,507					
121	2,831	2,972	3,114	3,255	3,114	3,255	3,397	3,538	3,397	3,538	3,680	3,821					
122	2,855	2,998	3,141	3,284	3,141	3,284	3,426	3,569	3,426	3,569	3,712	3,855					
123	2,450	2,573	2,695	2,818	2,695	2,818	2,940	3,063	2,940	3,063	3,185	3,308					
124	2,916	3,062	3,207	3,353	3,207	3,353	3,499	3,645	3,499	3,645	3,790	3,936					
125	2,827	2,969	3,110	3,251	3,110	3,251	3,393	3,534	3,393	3,534	3,675	3,817					
131	2,765	2,904	3,042	3,180	3,042	3,180	3,318	3,457	3,318	3,457	3,595	3,733					
132	2,651	2,783	2,916	3,048	2,916	3,048	3,181	3,313	3,181	3,313	3,446	3,578					
133	2,651	2,783	2,916	3,048	2,916	3,048	3,181	3,313	3,181	3,313	3,446	3,578					
141	2,969	3,117	3,265	3,414	3,265	3,414	3,562	3,711	3,562	3,711	3,859	4,007					
142	2,686	2,820	2,954	3,089	2,954	3,089	3,223	3,357	3,223	3,357	3,492	3,626					
143	2,827	2,969	3,110	3,251	3,110	3,251	3,393	3,534	3,393	3,534	3,675	3,817					
144	2,827	2,969	3,110	3,251	3,110	3,251	3,393	3,534	3,393	3,534	3,675	3,817					

< -23>

(3)

(1)

:

/	350					117 349					116						
	51	36	50	21	35	20	51	36	50	21	35	20	51	36	50	21	35
145	145	2,686	2,820	2,954	3,089	2,954	3,089	3,223	3,357	3,223	3,357	3,492					
146	146	2,686	2,820	2,954	3,089	2,954	3,089	3,223	3,357	3,223	3,357	3,492					
147	147	2,686	2,820	2,954	3,089	2,954	3,089	3,223	3,357	3,223	3,357	3,492					
148	148	2,969	3,117	3,265	3,414	3,265	3,414	3,562	3,711	3,562	3,711	3,859					
151	151	2,827	2,969	3,110	3,251	3,110	3,251	3,393	3,534	3,393	3,534	3,675					
152	152	2,969	3,117	3,265	3,414	3,265	3,414	3,562	3,711	3,562	3,711	3,859					
153	153	2,827	2,969	3,110	3,251	3,110	3,251	3,393	3,534	3,393	3,534	3,675					
161	161	2,827	2,969	3,110	3,251	3,110	3,251	3,393	3,534	3,393	3,534	3,675					
162	162	2,827	2,969	3,110	3,251	3,110	3,251	3,393	3,534	3,393	3,534	3,675					
163	163	2,827	2,969	3,110	3,251	3,110	3,251	3,393	3,534	3,393	3,534	3,675					
171	171	2,969	3,117	3,265	3,414	3,265	3,414	3,562	3,711	3,562	3,711	3,859					
172	172	2,969	3,117	3,265	3,414	3,265	3,414	3,562	3,711	3,562	3,711	3,859					

< -24>

(1)

(1 가)

:

/	350					117-349					116							
	51	36	50	21	35	20	51	36	50	21	35	20	51	36	50	21	35	20
	2,063	2,166	2,269	2,372		2,269	2,372	2,476	2,579	2,476	2,579	2,682	2,785					
11	2,002	2,102	2,202	2,302		2,202	2,302	2,402	2,502	2,402	2,502	2,602	2,702					
12	2,062	2,165	2,268	2,371		2,268	2,371	2,474	2,578	2,474	2,578	2,681	2,784					
13	2,002	2,102	2,202	2,302		2,202	2,302	2,402	2,502	2,402	2,502	2,602	2,702					
14	2,002	2,102	2,202	2,302		2,202	2,302	2,402	2,502	2,402	2,502	2,602	2,702					
15	2,023	2,124	2,225	2,326		2,225	2,326	2,427	2,529	2,427	2,529	2,630	2,731					
16	2,039	2,141	2,243	2,345		2,243	2,345	2,447	2,549	2,447	2,549	2,651	2,753					
21	1,979	2,078	2,177	2,276		2,177	2,276	2,375	2,473	2,375	2,473	2,572	2,671					
22	1,877	1,971	2,065	2,159		2,065	2,159	2,253	2,347	2,253	2,347	2,440	2,534					
23	1,877	1,971	2,065	2,159		2,065	2,159	2,253	2,347	2,253	2,347	2,440	2,534					
24	1,926	2,022	2,118	2,215		2,118	2,215	2,311	2,407	2,311	2,407	2,504	2,600					
25	2,083	2,187	2,291	2,395		2,291	2,395	2,499	2,604	2,499	2,604	2,708	2,812					
26	1,979	2,078	2,177	2,276		2,177	2,276	2,375	2,473	2,375	2,473	2,572	2,671					
27	1,926	2,022	2,118	2,215		2,118	2,215	2,311	2,407	2,311	2,407	2,504	2,600					
31	2,186	2,295	2,405	2,514		2,405	2,514	2,623	2,732	2,623	2,732	2,842	2,951					
32	2,016	2,117	2,218	2,319		2,218	2,319	2,419	2,520	2,419	2,520	2,621	2,722					
33	2,192	2,302	2,412	2,521		2,412	2,521	2,631	2,740	2,631	2,740	2,850	2,960					
34	2,063	2,166	2,269	2,373		2,269	2,373	2,476	2,579	2,476	2,579	2,682	2,785					
35	2,066	2,169	2,273	2,376		2,273	2,376	2,479	2,582	2,479	2,582	2,686	2,789					
41	2,063	2,166	2,269	2,373		2,269	2,373	2,476	2,579	2,476	2,579	2,682	2,785					
42	2,063	2,166	2,269	2,373		2,269	2,373	2,476	2,579	2,476	2,579	2,682	2,785					
51	2,915	3,061	3,207	3,352		3,207	3,352	3,498	3,644	3,498	3,644	3,790	3,935					
52	2,166	2,275	2,383	2,491		2,383	2,491	2,600	2,708	2,600	2,708	2,816	2,924					
53	2,281	2,395	2,509	2,623		2,509	2,623	2,737	2,851	2,737	2,851	2,965	3,079					
54	2,040	2,142	2,244	2,346		2,244	2,346	2,448	2,550	2,448	2,550	2,652	2,754					
55	2,328	2,445	2,561	2,678		2,561	2,678	2,794	2,910	2,794	2,910	3,027	3,143					
56	2,106	2,212	2,317	2,422		2,317	2,422	2,528	2,633	2,528	2,633	2,738	2,844					
61	2,063	2,166	2,269	2,373		2,269	2,373	2,476	2,579	2,476	2,579	2,682	2,785					
62	2,082	2,186	2,290	2,394		2,290	2,394	2,498	2,602	2,498	2,602	2,707	2,811					
63	1,884	1,978	2,072	2,166		2,072	2,166	2,260	2,355	2,260	2,355	2,449	2,543					
64	1,926	2,022	2,118	2,215		2,118	2,215	2,311	2,407	2,311	2,407	2,504	2,600					

(1 가)

:

/	350					117-349					116						
	51	36	50	21	35	20	51	36	50	21	35	20	51	36	50	21	35
71	1,926	2,022	2,118	2,215	2,118	2,215	2,311	2,407	2,311	2,407	2,504	2,600					
72	1,970	2,069	2,167	2,266	2,167	2,266	2,364	2,463	2,364	2,463	2,561	2,660					
73	1,973	2,072	2,171	2,269	2,171	2,269	2,368	2,467	2,368	2,467	2,565	2,664					
74	1,926	2,022	2,118	2,215	2,118	2,215	2,311	2,407	2,311	2,407	2,504	2,600					
75	1,974	2,073	2,172	2,270	2,172	2,270	2,369	2,468	2,369	2,468	2,567	2,665					
81	1,926	2,022	2,118	2,215	2,118	2,215	2,311	2,407	2,311	2,407	2,504	2,600					
82	1,849	1,941	2,034	2,126	2,034	2,126	2,218	2,311	2,218	2,311	2,403	2,496					
83	2,043	2,145	2,248	2,350	2,248	2,350	2,452	2,554	2,452	2,554	2,656	2,758					
91	1,897	1,992	2,087	2,182	2,087	2,182	2,276	2,371	2,276	2,371	2,466	2,561					
92	1,807	1,897	1,987	2,078	1,987	2,078	2,168	2,258	2,168	2,258	2,349	2,439					
93	1,934	2,031	2,128	2,224	2,128	2,224	2,321	2,418	2,321	2,418	2,514	2,611					
94	1,934	2,031	2,128	2,224	2,128	2,224	2,321	2,418	2,321	2,418	2,514	2,611					
95	1,934	2,031	2,128	2,224	2,128	2,224	2,321	2,418	2,321	2,418	2,514	2,611					
96	1,934	2,031	2,128	2,224	2,128	2,224	2,321	2,418	2,321	2,418	2,514	2,611					
97	1,922	2,018	2,114	2,210	2,114	2,210	2,306	2,402	2,306	2,402	2,498	2,594					
101	2,403	2,523	2,643	2,763	2,643	2,763	2,883	3,003	2,883	3,003	3,124	3,244					
102	2,836	2,977	3,119	3,261	3,119	3,261	3,403	3,544	3,403	3,544	3,686	3,828					
103	2,436	2,557	2,679	2,801	2,679	2,801	2,923	3,044	2,923	3,044	3,166	3,288					
104	2,481	2,605	2,729	2,853	2,729	2,853	2,977	3,101	2,977	3,101	3,225	3,350					
111	2,071	2,175	2,278	2,382	2,278	2,382	2,485	2,589	2,485	2,589	2,692	2,796					
112	1,926	2,022	2,118	2,215	2,118	2,215	2,311	2,407	2,311	2,407	2,504	2,600					
113	1,896	1,991	2,085	2,180	2,085	2,180	2,275	2,370	2,275	2,370	2,465	2,559					
121	2,066	2,169	2,272	2,375	2,272	2,375	2,479	2,582	2,479	2,582	2,685	2,788					
122	2,084	2,188	2,292	2,396	2,292	2,396	2,500	2,605	2,500	2,605	2,709	2,813					
123	1,788	1,877	1,967	2,056	1,967	2,056	2,145	2,235	2,145	2,235	2,324	2,414					
124	2,128	2,234	2,341	2,447	2,341	2,447	2,553	2,660	2,553	2,660	2,766	2,872					
125	2,063	2,166	2,269	2,373	2,269	2,373	2,476	2,579	2,476	2,579	2,682	2,785					
131	2,018	2,119	2,220	2,321	2,220	2,321	2,422	2,522	2,422	2,522	2,623	2,724					
132	1,934	2,031	2,128	2,224	2,128	2,224	2,321	2,418	2,321	2,418	2,514	2,611					

< -26>

(3)

(1 가)

:

/	350				117 349					116							
	51	36	50	21 35	20	51	36	50	21	35	20	51	36	50	21	35	20
133	1,934	2,031	2,128	2,224	2,128	2,224	2,321	2,418	2,321	2,418	2,514	2,611					
141	2,166	2,275	2,383	2,491	2,383	2,491	2,600	2,708	2,600	2,708	2,816	2,924					
142	1,960	2,058	2,156	2,254	2,156	2,254	2,352	2,450	2,352	2,450	2,548	2,646					
143	2,063	2,166	2,269	2,373	2,269	2,373	2,476	2,579	2,476	2,579	2,682	2,785					
144	2,063	2,166	2,269	2,373	2,269	2,373	2,476	2,579	2,476	2,579	2,682	2,785					
145	1,960	2,058	2,156	2,254	2,156	2,254	2,352	2,450	2,352	2,450	2,548	2,646					
146	1,960	2,058	2,156	2,254	2,156	2,254	2,352	2,450	2,352	2,450	2,548	2,646					
147	1,960	2,058	2,156	2,254	2,156	2,254	2,352	2,450	2,352	2,450	2,548	2,646					
148	2,166	2,275	2,383	2,491	2,383	2,491	2,600	2,708	2,600	2,708	2,816	2,924					
151	2,063	2,166	2,269	2,373	2,269	2,373	2,476	2,579	2,476	2,579	2,682	2,785					
152	2,166	2,275	2,383	2,491	2,383	2,491	2,600	2,708	2,600	2,708	2,816	2,924					
153	2,063	2,166	2,269	2,373	2,269	2,373	2,476	2,579	2,476	2,579	2,682	2,785					
161	2,063	2,166	2,269	2,373	2,269	2,373	2,476	2,579	2,476	2,579	2,682	2,785					
162	2,063	2,166	2,269	2,373	2,269	2,373	2,476	2,579	2,476	2,579	2,682	2,785					
163	2,063	2,166	2,269	2,373	2,269	2,373	2,476	2,579	2,476	2,579	2,682	2,785					
171	2,166	2,275	2,383	2,491	2,383	2,491	2,600	2,708	2,600	2,708	2,816	2,924					
172	2,166	2,275	2,383	2,491	2,383	2,491	2,600	2,708	2,600	2,708	2,816	2,924					

•

가

,

가

,

가
가

가

가

1999

가

가

가

가

가

가

가

가

가

가

가

가

가

가

(1997), 97

(1997),

(1998),

(1998),

(1988),

(1992),

3 (1994),

(1995), '95

(1995),

(1996),

(1997),

(1997),

ABSTRACT

A Study on Recognition Method of Standard Training Cost

Korea Research Institute for Vocational Education & Training

Research-in-charge : Chung, Taek-Soo

Researchers : Choi, Young-Ho

Lee, Nam-Cheol

Lee, Byung-Hee

Kim, Cheol-Hee

I. Introduction

The aim of our research is to analyze the situation of the training market and the problems of state-supported training system. The state subsidizes vocational training based actual training cost recognition. Therefore the training cost recognition methods is a very important matter in the state-supported training system.

This research was accomplished as follows. First, we analyze the present method recognized the training cost. Second, we identify current problems existing with the recognition method. Based on these analyses, we suggest the rational recognition method to promote the sound vocational training market. And we would like to suggest standard training recognition methods of the Worker Job Training Promotion Act which was established recently.

II. Summary of the Present Recognition Method of Training Cost

The existing method of training cost recognition applies differently according to each case. The system promoting the Job Competency Development Project has four different methods; Job Training System under the Basic Vocational Training Act, Vocational Ability Development Scheme and various kinds of training support system by the Job Security Scheme under the Employment Insurance Act, Employment Promotion Training of Basic Employment Policy Act.

First, Vocational Ability Development Scheme Method under Employment Insurance Act recognizes actual training cost as it is. According to this method, in In-plant training cases, 80-90% of actual cost is supported by itemized-adjustment. In trusted training, the training cost is determined by the contract statement between companies and training agency. At this time, 70-80% of this contract amount is supported, and is not required post-adjustment.

The training standards does not strictly apply to Job Competency Development Project. The reason is that it takes priority of Job Competency Improvement of a worker in active service. For the most part, various training projects based on the Employment Insurance Act, such as Job Reconversion, Job Keeping Training, Inauguration Supporting Training, Adaptation Training etc. come within the purview of this method except the Unemployed Job Training.

Second, the Standard Training Cost method is based on the former Basic Vocational Training Act. It is post-adjusted by an itemized list within the limit. We can say that under this method, a relatively strict training standard regulation applies to the process of job training duty implementation.

Third, the method of Employment Promotion Training based on the Basic Employment Policy Act is supported as the lump-sum by Local

Autonomy. Because this method is characteristic of the supporting system for lower economic societal levels such as housekeeper, livelihood assistance, we can say that training cost subsidy is relatively low.

Finally, there is the method of the Unemployed Job Training. The supporting cost of Revised the Unemployed Job Training is determined by a 90% level of Standard Training Cost in terms of comparative table of per hours cost, classified by period of training and number of trainees.

III. Current Problems of Recognition Training Cost Methods

We found some problems as follows based on the findings by 「The Survey of Training Cost in 1997」.

First, the state-supported training costs have serious differences. So, it will be argued that the support of training cost bears inequity among training agencies. The reason is that training costs are supported differently according to the applied different method of training cost recognition.

Second, the function of market does not work well in terms of the determination of the training cost. In other words, the training cost is not decided by training content or market prices. Also, the determination of training costs depends on what kind of supporting system is applied. We can say that the different supporting systems make the decision of training cost distort.

Third, each method of training cost recognition has each flaws.

The Vocational Ability Development Scheme method makes training costs excessive. We doubt that the rational training cost can be formed when the function of the market does not play a major role.

In case of the Standard Training Costs method is calculated by required cost, therefore, it seems relatively close to actual cost. However, there is rigid management in adjustment process classified by

items.

While, the method of fixed amount in Employment Promotion Training may cause decrease in qualification because of lower supporting amount.

IV. Findings of Alternative

1. Main Direction

First, it should keep equity and consistency in supporting same training. If training has the same level and content, the same training cost should be supported no matter who trains. In case of the content of training and the level of training are the same, but the trainees are different, we should complement by using differentiate training allowance.

Second, the function of autonomous decision on training cost should be guaranteed. That is, training cost subsidies should not distort the market functions.

Third, the support of training cost should facilitate vocational competency development effort in private sector. To development competitions among the training agencies and raise qualification of training, state should support excellent supplier of education and training.

2. Established Scheme of Recognition Formula of Training Cost

This research recommended a unitary method, which supports actual cost. However a ceiling price is set on the Standard Training Cost. The Standard Training Cost is calculated by required cost when training is practiced by a Training Standard. This Standard Training Cost is based on the actual cost which is needed when real training is implemented by

the training agencies.

Also, the New Standard Training Cost is not the former Standard Training Cost classified by industry. Considering the difference of training cost according to training content, we recommend Standard Training Cost of training by occupation.

Detailed device of accomplishment by new method of Standard Training Cost is as follows:

First, trusted training is supported by Standard Training Cost in principle. But Standard Training and Non-standard Training are supported with differential subsidized rates. Standard Training is supported Standard Training Cost by post-adjustment without classified item. And Non-standard Training is supported 50% level of Standard Training Cost by post-adjustment. However, Non-standard Training below this level is exempted from post-adjustment.

Second, in-plant training is supported by actual cost in principle, but below Standard Training Cost. The post-adjustment by classified items is abolished in Standard Training. The Non-standard Training is supported by actual training cost. However, in this case the upper limit of 80% of Standard training cost is set, and post-adjustment is exempted below this levels.

< >

< 1>

< 2>

< 3>

< 4> 1997

		()			()
06	01		, , , , ,	45	, ,
	02		, , , , , , ,	45	, , , , , , , ,
	03		, , ,	45	
	04				
07	01		, , , , , , , , , ,PLC,	45 31	, ,PLC,
	02		, , , , , , , ,	31	, , , , , , ,
	03		, , , ,	40	가
	04		, , , , , , , ,	45	, , , , , , ,
	05				
08	01		, , , , , , , ,	30 31 32	, , , , ,
	02	가	PC , , , , , , , , , ,가	30 31 32	, , , , , 가 ,
	03				
	04				
09	01		, , , , , , , ,	64	, , , , , , , ,
	02		()	64	, , , , , , , ,
	03		, , , , , , , ,		
	04		GPX,UNIX,		
	05	Database	Database,SQL		
	06		G,CAD,		
	07		IP		
10	01		, , , , , , , ,	34	
	02		, , , , , , , ,	35	, , , , , , , ,
	03			62	
	04				
11	01		, , , , , , , ,	22	, , , , , , , ,
	02		가 , , , , , , , ,	36	가 가
	03		, , , , , , , ,	33	, , , , , , , ,

()			()		
12	01	가 , 가 , ,	36	가	가 , 가 ,
	02	가 , 가 , , , , ,	36	가	가 , , , , , ,
			26		, ,
	03		18	,	,
	04	가 , , ,	36	가	가 ,
		34			
	05	, , ,	36	가	, , , ,
13	01	, , , , ,	15		, , , , ,
	02	, , , , , ,			, , , , , ,
	03	, , , , , , , ,			, , , , , , , ,
14	01	, , , , , ,			
	02	, , , , , , ,			
	03	, , , , , , , ,			
	04	, , , , , , , , ,			
	05	, , , , , , , , , ,			
	06	, , , , , , , , , , ,			, , , , , , , , , , ,
	07	, , , , , , , , , , , ,			, , , , , , , , , , , ,
	08	, , , , , , , , , , , , ,			, , , , , , , , , , , , ,
15	01				
	02	, , , , , , , ,			
	03	, , , , , , , , , ,			
16	01	, , , , , , , ,			
	02	, , , , , , , , , ,			
	03	, , , , , , , , , , ,			
17	01	, , , , , , , , ,			
	02	, , , , , , , , , ,			

< 2 >

<p>01</p>	<p>01 02 03 04 가 05 06</p>	<p>, , , , , 가 , 가 , , 가 , , , , , , 가 , 가 ,</p>
<p>02</p>	<p>01 가 02 03 04 05 06 07</p>	<p>, , , , , 가 , , , , , , 가 , (,), , , , , , , ,</p>
<p>03</p>	<p>01 02 03 04 가 05</p>	<p>가 , , , 가 , , , , , , , , , , , FRP , 가 가 ,</p>
<p>04</p>	<p>01 가 02</p>	<p>, , , , , (,), , , , (), , , , , , (), , , , ,</p>

13	01 02 03	, , , , , , , , , * , * , , (), , , , , , , ,
14	01 02 03 04 05 06 07 08	, , , , , , MIS , , , , , , , , , , , , , , , , , ACCESS , , 가 , , , , , , , , ,
15	01 02 03	TELLER LEVEL UP , , , , , , , , , , , , , , , , ,
16	01 02 03	, , , , , , , , , , , , , , , ,
17	01 02	, , , , ,

< 3 >

1)

1.

6 2%

3 , 5

, 1998

7,377

1,350

374 가 , 1997 102 1998 3 31
1997 2 1998 8

가

가

가

1) , 1998 5 29 「
 , 1998 6 15
1998 7 1

2.

가
(, 9
가 , ,
, ,
, ,
가
, ,
가
가 .
가
가 ,
가
가 ,
가 .

< 1>

○	(, ,)	
-	33)	(45.5 ,
- 1		120%
○	(,)	
-	49.5)	150% (68.2 ,
- 1		
- 1	.	

3.

가.

381
 (3 , 1998. 4. 1)
 , , ,
 . 1 4

< 2>

,
 가 . ,
 2,013 3,631
 1,085 . 가

가 가 , ,
 20% ,
 (86 , 80),
 50% (< 1>).

1 가 가

< 2> ()
 (:)

			(.)	
	2,447	2,013	3,631	1,085
- 1	2,101	2,009	3,186	1,090
30	2,520	2,682	3,630	1,084
60	1,678	1,630	2,653	1,071
- 1	3,266	2,303	3,627	
30	3,539		3,539	
60	2,810		2,810	
- 2	4,541	668	4,855	837
30	2,838	668	3,018	
60	4,910		5,484	890

: 4 가 ,
가 .

: , 「 3 」, 1998.4.1

. 가 가

1998 4

가

가 . <

3> 800 6,000 가 ,
;

가

가

가

가 가

가

가

가

, 가

가

< 3>

가

			1) ()		2) ()				()	3) ()
1	1		151	3	150	7	25	175	857	2,592
2	5		150	6	150	5	25	125	1,200	
3	5		200	6	117	3	20	60	1,950	
4	5		140	6	140	5	20	100	1,400	
5	5		150	6	130	4	20	80	1,625	
6	5		250	6	250	6	20	120	2,083	
7	5		100	6	100	4	20	80	1,250	
8	5		160	6	162	2	20	40	4,050	
9	5		140	1	150	6	20	120	1,250	
10	5		150	6	130	4	20	80	1,625	
11	5		230	12	50	2	20	20	2,500	
12	5		292	6	146	3	20	60	2,433	
13	5		140	1	180	4	20	80	2,250	
14	5		100	3	200	3	20	60	3,333	
		13							2,073	3,780
15	6		295	6	200	5	20	100	2,000	
16	6		130	3	130	4	25	100	1,300	
17	6		317	1	300	6	20	60	5,000	
		3							2,767	2,292
18	9		248	6	250	5	25	125	2,000	
19	9		98	3	200	3	20	60	3,333	
20	9		250	6	250	6	20	120	2,083	
21	9		228	6	233	6	20	120	1,942	
22	9		250	6	88	1	20	20	4,400	
23	9		130	1	80	2	20	40	2,000	

			1) ()		2) ()				()	3) ()
24	9		225	6	247	6	20	120	2,058	
25	9		80	1	80	5	20	100	800	
26	9		176	6	176	6	25	150	1,173	
		9							2,199	
27	11		260	5	190	2	20	40	4,750	
28	11		227	6	267	6	20	120	2,225	
29	11		250	6	250	6	20	120	2,083	
30	11		295	6	150	3	20	60	2,500	
		4							2,890	2,278
31	13		120	3	100	4	25	100	1,000	
32	13		150	3	140	4	25	100	1,400	
33	13		200	3	180	3	20	60	3,000	
34	13		150	3	360	3	20	60	6,000	
35	13		150	4	200	8	20	160	1,250	
36	13		230	3	250	4	20	80	3,125	
37	13		320	3	210	4	20	80	2,625	
38	13		220	6	90	3	25	75	1,200	
39	13		220	6	85	4	25	100	850	
40	13		250	6	178	6	25	150	1,187	
41	13		200	1	200	3	20	60	3,333	
		11							2,270	2,099
42	14		250	6	250	6	20	120	2,083	
43	14		150	3	120	3	20	60	2,000	
		2							2,042	2,402
		43							2,244	2,402

: 1) '98)
2) , 1
3) 가 (60 ,)

가 () 가

가
가
가

가
()가

가
가

4.

가.

『
』
.
.
.

(A)

가

(B)

()

,
가 (가) (

, 30 2,828) < 2>
1 2,013
3,631
(1,085)
가 .

(C)
가 , 가 ,

가 .
(2,545) , (2,828) 90%
가
1 , 3 , 3 가

가 (C)
. C 가

(C-1)

,

가

가 ,

가

가

,

,

.

(C-2)

,

,

,

가

가

,

)

(

가

가

가

.

가

,

가

.

.

< >
 가 , 가 , , ,

. 가

1) 가

가 가
 가 .

- :
 - :
 - :

(가)

6 , 30

가 . 가 가 .

- 1 가 ,
 - 가

- , , 가

- , 가

2) 가

가)

2,800 , , , 20
 , 1 2 8 , 1
 2 6 , 가
 가 가

) 1998

가 (< 3>),

가 , 가
 가 ,
 () 가
 가 . 가
 '98 가 가
 , .
)

15 60

,
 가 .
 30 2 ()
 1) 0.4 , 60 3
 0.6 가
 (, 1988). 1998 30
 , 1 .

$$- 1,192,000 \times 30 \div 6 \div 2.4 = 2,483,333 /$$

$$- 2,483,333 \times 6 \times 3.6 \div 60 = 894,000 /$$

45 , 15 1

가 < 4> .
 < 4>

(:)

60	2,431	894	197	261	329	750
(51)	(3.473)	(1.277)	(0.281)	(0.373)	(0.470)	(1.071)
45	2,580	1,043	197	261	329	750
(36-50)	(3.686)	(1.490)	(0.281)	(0.373)	(0.470)	(1.071)
30	2,729	1,192	197	261	329	750
(21-35)	(3.899)	(1.703)	(0.281)	(0.373)	(0.470)	(1.071)
15	2,878	1,341	197	261	329	750
(20)	(4.111)	(1.916)	(0.281)	(0.373)	(0.470)	(1.071)

: ()

)

가 ,

가

가 .

.

「

」

< 3>

가

가 ,

가 가

가 가

(< 5>) .

< 6> .

< 5 >

		()			()
(01)		, 가 ,	15		, 가 ,
		,	10		, ,
(02)		, , ,	17		, ,
(03)		, 가 , 가	24		, 가
(04)		, , , ,	27	1	, ,
(05)	가	, ,CAD,CAM	29		, ,CAD,CAM
		, ,	45		, ,
		, ,	28		, , ,
(06)		, ,	45		, ,
(07)		, ,	31		, ,
		, ,	45		, ,
(08)		, 가	32		, 가
(09)		, ,DB	64		,
(10)		,	34		,
		, ,	35		, , 가
(11)		, ,	22		, ,
(12)		가 , ,	36	가 ,	가 ,가 , ,
(13)		, , ,			, , ,
		, , , ,			, , , ,
(14)		, , , ,			, , , ,
(15)		, ,			
(16)		, ,			
(17)		,			

: , '98 , 1997, 1997-49
 , ' ,
 1998.3.2

< 6 >

	2,729		2,729	
(01)	2,670	(15)	2,670	
	2,862	(10)	2,862	(2,723)
(02)	2,748	(17)	2,748	(2,465)
(03)	, 2,765	(24)	2,765	(2,853), 가
(04)	2,729	1 (27)	2,525	가
(05)	가 3,694	(29)	3,694	
	, 2,652	(45-46)	2,652	(2,598)
	, 2,877	(28)	2,877	
(06)	2,652	(45-46)	2,652	
(07)	2,628	(31)	2,628	
	2,729	(45-46)	2,652	가
(08)	2,628	, , (32)	2,628	
(09)	, 2,483	(64)	2,483	
(10)	2,945	(34)	2,945	
	3,470	(35)	3,470	
(11)	2,642	(22)	2,642	
(12)	2,637	가 , (36)	2,637	
(13)	2,729	.	2,517	가
	2,517	.	2,517	
(14)	2,729	.	2,517	가
(15)	2,729		-	
(16)	2,729		-	
(17)	2,729		-	

(
, 6)

< 7> () (6)
(:)

	60	45	30	15
	2,431	2,580	2,729	2,878
	2,372	2,521	2,670	2,819
	2,564	2,713	2,862	3,011
	2,450	2,599	2,748	2,897
,	2,467	2,616	2,765	2,914
	2,431	2,580	2,729	2,878
가 ,	3,396	3,545	3,694	3,843
,	2,354	2,503	2,652	2,801
,	2,579	2,728	2,877	3,026
	2,354	2,503	2,652	2,801
	2,330	2,479	2,628	2,777
	2,431	2,580	2,729	2,878
	2,330	2,479	2,628	2,777
,	2,185	2,334	2,483	2,632
	2,647	2,796	2,945	3,094
	3,172	3,321	3,470	3,619
	2,344	2,493	2,642	2,791
	2,339	2,488	2,637	2,786
	2,431	2,580	2,729	2,878
	2,219	2,368	2,517	2,666
	2,431	2,580	2,729	2,878
	2,431	2,580	2,729	2,878
	2,431	2,580	2,729	2,878
	2,431	2,580	2,729	2,878

< 8>

(6)

(:)

		60	45	30	15
		2,188	2,322	2,456	2,590
011-4		2,135	2,269	2,403	2,537
015		2,308	2,442	2,576	2,710
02		2,205	2,339	2,473	2,607
03	,	2,220	2,354	2,489	2,623
04		2,188	2,322	2,456	2,590
051-2	가 ,	3,056	3,191	3,325	3,459
053-4	,	2,119	2,253	2,387	2,521
055-6	,	2,321	2,455	2,589	2,723
06		2,119	2,253	2,387	2,521
071-3		2,097	2,231	2,365	2,499
074		2,188	2,322	2,456	2,590
08		2,097	2,231	2,365	2,499
09	,	1,967	2,101	2,235	2,369
101		2,382	2,516	2,651	2,785
102-4		2,855	2,989	3,123	3,257
11		2,110	2,244	2,378	2,512
12		2,105	2,239	2,373	2,507
131		2,188	2,322	2,456	2,590
132-3		1,997	2,131	2,265	2,399
14		2,188	2,322	2,456	2,590
15		2,188	2,322	2,456	2,590
16		2,188	2,322	2,456	2,590
17		2,188	2,322	2,456	2,590

) .

가 ()

,
가 .
'98 1 2,560
. 1 4
< 9> 1 3
가 .

< 9> 1 (가)
(:)

1	4	5	6	7	8
	640	512	427	366	320

: '98 1 2,560

)

,

,

가 .

)

,

가
 (1.0) 0.9, 1.2, 0.7,
 1.3

) 가 (:)

	350 (3)				117-349 (1 -3)				116 (1)			
	51	36	21	20	51	36	21	20	51	36	21	20
	2,162	2,410	2,658	2,908	2,270	2,531	2,791	3,054	2,378	2,651	2,924	3,199

가 가× × 가 ×

(1)

가 (1)

(:)

	350				117 349				116			
	51	36 50	21 35	20	51	36 50	21 35	20	51	36 50	21 35	20
	2,162	2,410	2,658	2,908	2,270	2,531	2,791	3,054	2,378	2,651	2,924	3,199
	2,086	2,325	2,565	2,806	2,190	2,442	2,693	2,946	2,294	2,557	2,821	3,086
(01) 가	2,086	2,325	2,565	2,806	2,190	2,442	2,693	2,946	2,294	2,558	2,821	3,086
	2,333	2,601	2,868	3,138	2,450	2,732	3,012	3,296	2,566	2,861	3,155	3,452
	2,104	2,346	2,587	2,830	2,209	2,463	2,716	2,972	2,314	2,580	2,846	3,113
(02)	2,321	2,588	2,854	3,122	2,437	2,717	2,997	3,278	2,553	2,846	3,139	3,434
	2,186	2,437	2,688	2,941	2,295	2,559	2,822	3,088	2,405	2,681	2,957	3,235
	2,208	2,461	2,715	2,970	2,319	2,586	2,851	3,120	2,429	2,708	2,987	3,268
(03)	2,321	2,588	2,854	3,122	2,437	2,717	2,997	3,278	2,553	2,846	3,139	3,434
	2,162	2,410	2,658	2,908	2,270	2,531	2,791	3,054	2,378	2,651	2,924	3,199
(04) 가	2,162	2,410	2,658	2,908	2,270	2,531	2,791	3,054	2,378	2,651	2,924	3,199
	3,402	3,792	4,182	4,576	3,573	3,984	4,393	4,807	3,743	4,173	4,602	5,035
(05)	2,162	2,410	2,658	2,908	2,270	2,530	2,791	3,053	2,378	2,651	2,924	3,198
	2,063	2,300	2,536	2,775	2,166	2,415	2,663	2,914	2,269	2,529	2,790	3,052
	2,352	2,622	2,892	3,164	2,470	2,754	3,037	3,323	2,587	2,884	3,181	3,480
(06)	2,063	2,300	2,536	2,775	2,166	2,415	2,663	2,914	2,269	2,529	2,790	3,052
	2,063	2,300	2,536	2,775	2,166	2,415	2,663	2,914	2,269	2,529	2,790	3,052
	2,162	2,410	2,658	2,908	2,270	2,531	2,791	3,054	2,378	2,651	2,924	3,199
(07)	2,162	2,410	2,658	2,908	2,270	2,530	2,791	3,053	2,378	2,651	2,924	3,198
	2,032	2,265	2,498	2,733	2,134	2,379	2,624	2,871	2,235	2,492	2,748	3,007
	2,162	2,410	2,658	2,908	2,270	2,531	2,791	3,054	2,378	2,651	2,924	3,199
(08)	2,032	2,265	2,498	2,733	2,134	2,379	2,624	2,871	2,235	2,492	2,748	3,007
	1,845	2,057	2,269	2,482	1,937	2,160	2,382	2,606	2,030	2,263	2,496	2,730
(09)	2,162	2,410	2,658	2,908	2,270	2,531	2,791	3,054	2,378	2,651	2,924	3,199
	2,162	2,410	2,658	2,908	2,270	2,531	2,791	3,054	2,378	2,651	2,924	3,199
(10)	2,439	2,719	2,999	3,281	2,561	2,855	3,149	3,445	2,683	2,991	3,299	3,609
	3,114	3,472	3,829	4,189	3,270	3,646	4,021	4,399	3,426	3,819	4,212	4,608
(11)	2,050	2,285	2,520	2,757	2,153	2,401	2,647	2,895	2,255	2,514	2,773	3,034
	2,043	2,277	2,512	2,748	2,145	2,392	2,638	2,886	2,247	2,505	2,763	3,023
(12) 가 ,	2,043	2,277	2,512	2,749	2,145	2,392	2,638	2,886	2,248	2,506	2,764	3,023
	2,043	2,277	2,512	2,749	2,145	2,392	2,638	2,886	2,248	2,506	2,764	3,023
	2,162	2,410	2,658	2,908	2,270	2,531	2,791	3,054	2,378	2,651	2,924	3,199
(13)	1,889	2,106	2,322	2,541	1,984	2,212	2,439	2,669	2,078	2,317	2,555	2,795
	1,889	2,106	2,322	2,514	1,984	2,212	2,439	2,669	2,078	2,317	2,555	2,795
	2,378	2,651	2,924	3,199	2,497	2,784	3,070	3,359	2,616	2,916	3,216	3,519
(14)	2,162	2,410	2,658	2,908	2,270	2,531	2,791	3,054	2,378	2,651	2,924	3,199
	2,162	2,410	2,658	2,908	2,270	2,531	2,791	3,054	2,378	2,651	2,924	3,199
(15)	2,162	2,410	2,658	2,908	2,270	2,531	2,791	3,054	2,378	2,651	2,924	3,199
	1,882	2,106	2,323	2,541	1,983	2,211	2,439	2,668	2,078	2,317	2,555	2,795
(16)	2,162	2,410	2,658	2,908	2,270	2,531	2,791	3,054	2,378	2,651	2,924	3,199
	2,162	2,410	2,658	2,908	2,270	2,531	2,791	3,054	2,378	2,651	2,924	3,199
(17)	2,162	2,410	2,658	2,908	2,270	2,531	2,791	3,054	2,378	2,651	2,924	3,199
	2,162	2,410	2,658	2,908	2,270	2,531	2,791	3,054	2,378	2,651	2,924	3,199

(2) 가

	가
8 1 1	1.0
8 1 1	0.9
8 1 2	1.2
8 1 3 .	1.3
8 1 4 5	0.7

< 4> 1997 ()

?

가

「1997

1997 11

8 1999 1 1

가

가

1998 2 25

1998 3

5

,

155

: 02-3498-5641 5 : 02-573-7263

: 02-503-9759, 500-5587 : 02-504-2039